

## LAMPIRAN I

**LAPORAN POSISI KEUANGAN (NERACA)  
PT. ASDP INDONESIA FERRY (PERSERO)  
PERIODE : TRIWULANAN TAHUN 2009**

URAIAN/TAHUN	2009			
	TRW I	TRW II	TRW III	TRW IV
<b>AKTIVA</b>				
<b>AKTIVA LANCAR</b>				
Kas dan setara kas	521,325,082,760	511,867,266,048	474,413,333,403	518,398,139,067
Investasi Jangka Pendek				
Uang Muka				
Pihak Ketiga				
Pihak-pihak berelasi				
Uang muka pajak				
Piutang				
Usaha - bersih setelah dikurangi penyisihan piutang ragu-ragu tahun	26,990,958,008	33,487,719,909	41,890,299,850	36,262,215,132
Piutang Pegawai				
Lain-lain				
Pihak hubungan istimewa	5,593,806,951	0		
Pihak ketiga	2,213,364,552	9,589,853,408	13,117,326,869	7,252,582,908
Pendapatan Yang Masih Harus Diterima				
Persediaan	5,309,151,083	3,941,270,040	4,273,723,344	5,475,971,963
Biaya dibayar dimuka	5,810,649,689	6,754,892,268	4,891,823,731	3,094,890,511
Aset lancar lainnya				
<b>Jumlah Aktiva Lancar</b>	<b>567,243,013,042</b>	<b>565,641,001,673</b>	<b>538,586,507,197</b>	<b>570,483,799,581</b>
Aktiva pajak tangguhan	3,127,217,213			
<b>AKTIVA TIDAK LANCAR</b>				
<b>AKTIVA TETAP</b>				
Tahun 2009 dan Tahun 2014	1,343,817,786,314	893,328,182,458	918,750,413,143	1,041,221,491,414
Akumulasi penyusutan	(449,089,286,390)	0		
<b>JUMLAH AKTIVA TETAP</b>	<b>894,728,499,924</b>	<b>893,328,182,458</b>	<b>918,750,413,143</b>	<b>1,041,221,491,414</b>
<b>AKTIVA LAIN-LAIN</b>				
Tagihan lebih bayar pajak penghasilan	2,575,633,351	180,601,725	236,547,756	3,649,470,746
Aset tetap Sewa Pembiayaan				
Aset Tidak Lancar Lainnya	805,731,723	15,942,468,165	30,305,854,828	4,255,115,835
<b>JUMLAH AKTIVA LAIN-LAIN</b>	<b>3,381,365,074</b>	<b>16,123,069,889</b>	<b>30,542,402,583</b>	<b>7,904,586,581</b>
<b>Jumlah Aktiva Tidak Lancar</b>	<b>898,109,864,998</b>	<b>909,451,252,347</b>	<b>949,292,815,727</b>	<b>1,049,126,077,995</b>
<b>JUMLAH AKTIVA</b>	<b>1,468,480,095,253</b>	<b>1,475,092,254,020</b>	<b>1,487,879,322,923</b>	<b>1,619,609,877,576</b>
<b>PASSIVA</b>				
<b>KEWAJIBAN LANCAR</b>				
Hutang Usaha				
Pihak yang mempunyai hubungan istimewa	830,969,280	1,020,070,195	1,264,822,195	129,365,920
Pihak ketiga	45,402,275,821	59,067,018,346	75,456,749,637	102,175,350,045
Hutang pajak	7,103,496,977	2,455,429,377	3,656,568,218	1,746,529,633
Biaya Yang Masih Harus Dibayar	27,131,014,909	19,982,470,408	2,972,004,791	15,665,172,923
Pendapatan Yang Diterima Dimuka				
Kewajiban lancar lainnya	35,032,454,141	43,193,266,819	48,280,396,259	39,411,166,629
<b>Jumlah Kewajiban Lancar</b>	<b>115,500,211,128</b>	<b>125,718,255,145</b>	<b>131,630,541,100</b>	<b>159,127,585,150</b>
<b>KEWAJIBAN JANGKA PANJANG</b>				
Kewajiban Imbalan Pasca Kerja	5,032,794,515	5,412,734,427	5,412,734,427	11,696,582,507
Kewajiban Pajak Tangguhan		8,505,161,113	8,505,161,113	9,262,648,997
Liabilitas Pembiayaan Jangka Panjang				
Liabilitas jangka panjang lainnya				
<b>Jumlah Kewajiban Jk Panjang</b>	<b>5,032,794,515</b>	<b>13,917,895,540</b>	<b>13,917,895,540</b>	<b>20,959,231,504</b>
<b>EKUITAS</b>				
Modal saham - nilai nominal Rp 1.000.000 per lembar saham				
Modal dasar - 1.600.000 lembar saham				
Modal ditempatkan dan disetor penuh				
405.753 lembar saham	405,753,000,000	405,753,000,000	405,753,000,000	405,753,000,000
Tambahan Modal Disetor	7,741,909,149	7,741,909,149	7,741,909,149	7,741,909,149
PENYERTAAN MODAL NEGARA YANG BELUM DITETAPKAN STATUSNYA	716,511,095,369	716,511,095,369	738,752,844,019	824,395,233,473
Cadangan Modal				
Saldo Laba	77,036,047,616	65,330,956,611	65,330,956,611	140,235,633,738
Belum ditentukan penggunaannya	140,905,037,476	140,119,142,209	124,752,176,505	61,397,284,563
<b>Jumlah Ekuitas</b>	<b>1,347,947,089,610</b>	<b>1,335,456,103,338</b>	<b>1,342,330,886,284</b>	<b>1,439,523,060,923</b>
<b>JUMLAH KEWAJIBAN DAN EKUITAS</b>	<b>1,468,480,095,254</b>	<b>1,475,092,254,023</b>	<b>1,487,879,322,924</b>	<b>1,619,609,877,577</b>

## LAMPIRAN II

**LAPORAN POSISI KEUANGAN (NERACA)  
PT. ASDP INDONESIA FERRY (PERSERO)  
PERIODE : TRIWULANAN TAHUN 2010**

URAIAN/TAHUN	2010			
	TRW I	TRW II	TRW III	TRW IV
<b>AKTIVA</b>				
<b>AKTIVA LANCAR</b>				
Kas dan setara kas	522,940,999,079	551,734,113,459	559,749,177,079	640,771,187,214
Investasi Jangka Pendek				
Uang Muka				
Pihak Ketiga				
Pihak-pihak berelasi				
Uang muka pajak				
Piutang				
Usaha - bersih setelah dikurangi penyisihan piutang ragu-ragu tahun	52,545,908,239	47,246,963,340	60,008,691,360	8,483,148,968
Piutang Pegawai				
Lain-lain				
Pihak hubungan istimewa				
Pihak ketiga	5,059,459,645	9,361,807,025	15,251,871,570	7,328,555,027
Pendapatan Yang Masih Harus Diterima				
Persediaan	5,260,966,289	5,887,233,039	4,317,888,615	4,625,036,091
Biaya dibayar dimuka	5,379,183,767	8,959,828,252	7,161,877,911	2,883,905,444
Aset lancar lainnya				
<b>Jumlah Aktiva Lancar</b>	<b>591,186,517,019</b>	<b>623,189,945,115</b>	<b>646,489,506,534</b>	<b>664,091,832,744</b>
Aktiva pajak tangguhan				
<b>AKTIVA TIDAK LANCAR</b>				
<b>AKTIVA TETAP</b>				
Tahun 2009 dan Tahun 2014	1,063,624,804,512	1,060,882,366,933	1,189,882,979,125	1,208,607,799,356
Akumulasi penyusutan				
<b>JUMLAH AKTIVA TETAP</b>	<b>1,063,624,804,512</b>	<b>1,060,882,366,933</b>	<b>1,189,882,979,125</b>	<b>1,208,607,799,356</b>
<b>AKTIVA LAIN-LAIN</b>				
Tagihan lebih bayar pajak penghasilan	2,865,716,923	4,866,926,007	5,735,682,457	3,996,893,859
Aset tetap Sewa Pembiayaan				
Aset Tidak Lancar Lainnya	3,997,067,444	5,410,131,829	5,706,412,269	11,747,723,625
<b>JUMLAH AKTIVA LAIN-LAIN</b>	<b>6,862,784,367</b>	<b>10,277,057,837</b>	<b>11,442,094,726</b>	<b>15,744,617,484</b>
<b>Jumlah Aktiva Tidak Lancar</b>	<b>1,070,487,588,879</b>	<b>1,071,159,424,770</b>	<b>1,201,325,073,852</b>	<b>1,224,352,416,840</b>
<b>JUMLAH AKTIVA</b>	<b>1,661,674,105,898</b>	<b>1,694,349,369,885</b>	<b>1,847,814,580,385</b>	<b>1,888,444,249,584</b>
<b>PASSIVA</b>				
<b>KEWAJIBAN LANCAR</b>				
Hutang Usaha				
Pihak yang mempunyai hubungan istimewa	136,623,920	108,565,920	99,295,770	104,170,920
Pihak ketiga	80,536,632,705	89,377,752,093	63,297,157,825	79,070,279,704
Hutang pajak	2,703,655,124	1,738,068,114	2,206,200,322	1,548,768,893
Biaya Yang Masih Harus Dibayar	14,031,771,097	13,786,765,131	15,543,927,692	32,799,180,316
Pendapatan Yang Diterima Dimuka				
Kewajiban lancar lainnya	44,225,366,011	50,912,454,826	43,264,032,472	23,764,271,495
<b>Jumlah Kewajiban Lancar</b>	<b>141,634,048,857</b>	<b>155,923,606,085</b>	<b>124,410,614,082</b>	<b>137,286,671,328</b>
<b>KEWAJIBAN JANGKA PANJANG</b>				
Kewajiban Imbalan Pasca Kerja	5,412,734,427	11,696,582,507	11,696,582,507	11,696,582,507
Kewajiban Pajak Tangguhan	9,510,694,680	9,262,648,996	9,262,648,996	9,363,339,829
Liabilitas Pembiayaan Jangka Panjang				
Liabilitas jangka panjang lainnya				
<b>Jumlah Kewajiban Jk Panjang</b>	<b>14,923,429,107</b>	<b>20,959,231,503</b>	<b>20,959,231,503</b>	<b>21,059,922,336</b>
<b>EKUITAS</b>				
Modal saham - nilai nominal Rp 1.000.000 per lembar saham				
Modal dasar - 1.600.000 lembar saham				
Modal ditempatkan dan disetor penuh				
405.753 lembar saham	405,753,000,000	405,753,000,000	405,753,000,000	405,753,000,000
Tambahan Modal Disetor	7,741,909,149	7,741,909,149	7,741,909,149	7,741,909,149
<b>PENYERTAAN MODAL NEGARA YANG BELUM DITETAPKAN STATUSNYA</b>	<b>856,619,672,747</b>	<b>874,649,663,523</b>	<b>1,022,469,575,533</b>	<b>1,041,580,466,783</b>
Cadangan Modal				
Sakdo Laba	140,235,633,738	140,235,633,738	140,235,633,738	140,235,633,738
Belum ditentukan penggunaannya	94,766,412,301	89,086,325,888	126,244,616,379	134,786,646,251
<b>Jumlah Ekuitas</b>	<b>1,505,116,627,934</b>	<b>1,517,466,532,297</b>	<b>1,702,444,734,799</b>	<b>1,730,097,655,921</b>
<b>JUMLAH KEWAJIBAN DAN EKUITAS</b>	<b>1,661,674,105,898</b>	<b>1,694,349,369,886</b>	<b>1,847,814,580,384</b>	<b>1,888,444,249,585</b>

## LAMPIRAN III

**LAPORAN POSISI KEUANGAN (NERACA)**  
**PT. ASDP INDONESIA FERRY (PERSERO)**  
**PERIODE : TRIWULANAN TAHUN 2011**

URAIAN/TAHUN	2011			
	TRW I	TRW II	TRW III	TRW IV
<b>AKTIVA</b>		0		
<b>AKTIVA LANCAR</b>				
Kas dan setara kas	640,962,611,927	685,340,758,999	702,740,623,797	752,751,577,427
Investasi Jangka Pendek	0	0		
Uang Muka				
Pihak Ketiga	0	0	0	3,123,472,965
Pihak-pihak berelasi	0	0	0	837,763,240
Uang muka pajak	0	0		
Piutang				
Usaha - bersih setelah dikurangi penyisihan	27,219,751,015	22,177,364,819	30,422,822,642	8,559,612,199
piutang ragu-ragu tahun	0	0		0
Piutang Pegawai	0	0		116,109,822
Lain-lain				
Pihak hubungan istimewa		0	0	-
Pihak ketiga	6,744,562,354	7,267,043,460	12,722,676,275	44,830,227
Pendapatan Yang Masih Harus Diterima	0	0	0	3,025,918,896
Persediaan	3,216,940,725	4,812,372,466	4,716,291,435	3,665,178,055
Biaya dibayar dimuka	8,031,134,107	10,459,481,063	9,222,307,299	3,389,944,706
Aset lancar lainnya	0	0		23,785,825,503
<b>Jumlah Aktiva Lancar</b>	<b>686,175,000,129</b>	<b>730,057,020,808</b>	<b>759,824,721,447</b>	<b>799,300,233,041</b>
Aktiva pajak tangguhan				
<b>AKTIVA TIDAK LANCAR</b>				
<b>AKTIVA TETAP</b>				
Tahun 2009 dan Tahun 2014	1,192,763,426,665	1,295,693,270,531	1,457,317,581,172	1,460,454,491,918
Akumulasi penyusutan				
<b>JUMLAH AKTIVA TETAP</b>	<b>1,192,763,426,665</b>	<b>1,295,693,270,531</b>	<b>1,457,317,581,172</b>	<b>1,460,454,491,918</b>
<b>AKTIVA LAIN-LAIN</b>				
Tagihan lebih bayar pajak penghasilan	4,603,112,498	4,391,285,274	4,899,964,204	0
Aset tetap Sewa Pembiayaan				
Aset Tidak Lancar Lainnya	7,068,878,428	7,291,557,967	836,281,267	6,291,485,494
<b>JUMLAH AKTIVA LAIN-LAIN</b>	<b>11,671,990,926</b>	<b>11,682,843,241</b>	<b>5,736,245,471</b>	<b>6,291,485,494</b>
<b>Jumlah Aktiva Tidak Lancar</b>	<b>1,204,435,417,591</b>	<b>1,307,376,113,772</b>	<b>1,463,053,826,643</b>	<b>1,466,745,977,412</b>
<b>JUMLAH AKTIVA</b>	<b>1,890,610,417,720</b>	<b>2,037,433,134,580</b>	<b>2,222,878,548,090</b>	<b>2,266,046,210,453</b>
<b>PASSIVA</b>				
<b>KEWAJIBAN LANCAR</b>				
Hutang Usaha				
Pihak yang mempunyai hubungan istimewa	71,500,201	189,016,420	239,103,120	10,048,029,047
Pihak ketiga	53,137,299,645	59,418,157,907	67,571,233,153	71,419,365,268
Hutang pajak	1,836,767,429	2,785,814,857	2,649,955,687	2,346,104,348
Biaya Yang Masih Harus Dibayar	31,056,858,753	43,517,909,495	43,278,133,622	31,680,379,550
Pendapatan Yang Diterima Dimuka				996,164,598
Kewajiban lancar lainnya	24,275,709,859	24,580,145,299	27,820,568,422	25,682,170,995
<b>Jumlah Kewajiban Lancar</b>	<b>110,378,135,887</b>	<b>130,491,043,978</b>	<b>141,558,994,004</b>	<b>142,172,213,806</b>
<b>KEWAJIBAN JANGKA PANJANG</b>				
Kewajiban Imbalan Pasca Kerja	11,696,582,507	13,726,369,226	13,726,369,226	13,726,369,226
Kewajiban Pajak Tangguhan	9,363,339,829	8,864,227,762	9,396,076,762	9,842,846,793
Liabilitas Pembiayaan Jangka Panjang				
Liabilitas jangka panjang lainnya	0	0	0	19,209,843,901
<b>Jumlah Kewajiban Jk Panjang</b>	<b>21,059,922,336</b>	<b>22,590,596,988</b>	<b>23,122,445,988</b>	<b>42,779,059,920</b>
<b>EKUITAS</b>				
Modal saham - nilai nominal Rp 1.000.000 per lembar saham				
Modal dasar - 1.600.000 lembar saham				
Modal ditempatkan dan disetor penuh	405,753,000,000	405,753,000,000	405,753,000,000	405,753,000,000
405.753 lembar saham				
Tambahan Modal Disetor	7,741,909,149	7,741,909,149	7,741,909,149	7,741,909,149
<b>PENYERTAAN MODAL NEGARA YANG BELUM DITETAPKAN STATUSNYA</b>	<b>1,041,580,466,783</b>	<b>1,157,410,744,073</b>	<b>1,303,691,392,583</b>	<b>1,304,923,496,183</b>
Cadangan Modal				
Sakdo Laba	140,235,633,738	140,235,633,738	253,557,765,848	248,258,559,791
Belum ditentukan penggunaannya	163,861,349,827	173,210,206,655	87,453,040,573	114,417,971,604
<b>Jumlah Ekuitas</b>	<b>1,759,172,359,497</b>	<b>1,884,351,493,615</b>	<b>2,058,197,108,153</b>	<b>2,081,094,936,726</b>
<b>JUMLAH KEWAJIBAN DAN EKUITAS</b>	<b>1,890,610,417,720</b>	<b>2,037,433,134,580</b>	<b>2,222,878,548,145</b>	<b>2,266,046,210,453</b>

## LAMPIRAN IV

### LAPORAN POSISI KEUANGAN (NERACA) PT. ASDP INDONESIA FERRY (PERSERO) PERIODE : TRIWULANAN TAHUN 2012

URAIAN/TAHUN	2012			
	TRW I	TRW II	TRW III	TRW IV
<b>AKTIVA</b>				
<b>AKTIVA LANCAR</b>				
Kas dan setara kas	751,921,464,684	766,342,527,002	744,199,954,188	816,696,505,171
Investasi Jangka Pendek	25,000,000,000	25,000,000,000	50,000,000,000	
Uang Muka				
Pihak Ketiga	1,309,925,000	2,185,175,435	2,663,986,335	18,810,000
Pihak-pihak berelasi	3,966,964,655	5,016,390,590	10,947,501,120	10,891,506,554
Uang muka pajak	104,405,642	212,881,076	329,737,946	
Piutang				
Usaha - bersih setelah dikurangi penyisihan piutang ragu-ragu tahun	975,625,541	10,631,866,303	9,723,325,941	8,785,873,119
Piutang Pegawai	22,070,880,910	23,853,831,679	52,542,948,835	9,193,181,390
Lain-lain	208,533,561	212,689,233	213,261,534	251,501,432
Pihak hubungan istimewa		0	0	-
Pihak ketiga	30,047,102	30,194,397	50,750,982	27,868,280
Pendapatan Yang Masih Harus Diterima	5,523,020,549	3,920,182,242	7,859,014,905	8,048,631,310
Persediaan	3,923,911,421	4,480,676,326	4,122,726,568	6,288,516,071
Biaya dibayar dimuka	9,532,418,095	9,011,017,954	9,534,552,380	9,227,978,241
Aset lancar lainnya		0		26,240,496,775
<b>Jumlah Aktiva Lancar</b>	<b>833,347,827,034</b>	<b>850,897,432,236</b>	<b>892,187,760,734</b>	<b>895,670,868,343</b>
Aktiva pajak tangguhan				
<b>AKTIVA TIDAK LANCAR</b>				
<b>AKTIVA TETAP</b>				
Tahun 2009 dan Tahun 2014 Akumulasi penyusutan	1,540,847,222,626	1,599,081,947,606	1,645,899,982,542	1,764,570,518,006
<b>JUMLAH AKTIVA TETAP</b>	<b>1,540,847,222,626</b>	<b>1,599,081,947,606</b>	<b>1,645,899,982,542</b>	<b>1,764,570,518,006</b>
<b>AKTIVA LAIN-LAIN</b>				
Tagihan lebih bayar pajak penghasilan	2,736,416,127	7,376,012,561	0	0
Aset tetap Sewa Pembiayaan			30,639,240,987	2,871,351,213
Aset Tidak Lancar Lainnya	4,012,662,207	21,451,701,017		
<b>JUMLAH AKTIVA LAIN-LAIN</b>	<b>6,749,078,334</b>	<b>28,827,713,578</b>	<b>30,639,240,987</b>	<b>2,871,351,213</b>
<b>Jumlah Aktiva Tidak Lancar</b>	<b>1,547,596,300,960</b>	<b>1,627,909,661,184</b>	<b>1,676,539,223,529</b>	<b>1,767,441,869,219</b>
<b>JUMLAH AKTIVA</b>	<b>2,380,944,127,993</b>	<b>2,478,807,093,420</b>	<b>2,568,726,984,263</b>	<b>2,663,112,737,562</b>
<b>PASSIVA</b>				
<b>KEWAJIBAN LANCAR</b>				
Hutang Usaha				
Pihak yang mempunyai hubungan istimewa	10,284,067,439	7,596,271,645	8,743,006,676	120,433,457,314
Pihak ketiga	51,012,350,401	73,286,891,944	74,141,662,328	54,467,381,132
Hutang pajak	2,267,171,215	3,189,175,085	6,246,676,224	2,846,834,399
Biaya Yang Masih Harus Dibayar	38,327,600,641	36,221,624,957	35,527,214,380	5,073,175,982
Pendapatan Yang Diterima Dimuka				
Kewajiban lancar lainnya	26,295,335,877	28,387,802,108	32,751,281,829	31,193,692,564
<b>Jumlah Kewajiban Lancar</b>	<b>128,186,525,571</b>	<b>148,681,765,738</b>	<b>157,409,841,437</b>	<b>214,014,541,391</b>
<b>KEWAJIBAN JANGKA PANJANG</b>				
Kewajiban Imbalan Pasca Kerja	13,726,369,226	12,997,123,852	12,997,123,852	15,817,795,821
Kewajiban Pajak Tangguhan	9,842,846,794	11,904,345,429	13,466,310,429	14,593,050,491
Liabilitas Pembiayaan Jangka Panjang				
Liabilitas jangka panjang lainnya	19,619,708,248	14,540,115,524	14,333,647,149	96,927,132,922
<b>Jumlah Kewajiban Jk Panjang</b>	<b>43,188,924,268</b>	<b>39,441,584,805</b>	<b>40,797,081,430</b>	<b>140,990,545,472</b>
<b>EKUITAS</b>				
Modal saham - nilai nominal Rp 1.000.000 per lembar saham				
Modal dasar - 1.600.000 lembar saham				
Modal ditempatkan dan disetor penuh	405,753,000,000	405,753,000,000	1,092,509,000,000	1,092,509,000,000
405.753 lembar saham				
Tambahkan Modal Disetor	7,741,909,149	1,430,930,417,345	779,228,502,429	7,741,162,065
<b>PENYERTAAN MODAL NEGARA YANG BELUM DITETAPKAN STATUSNYA</b>	<b>1,404,241,063,005</b>	<b>7,741,909,149</b>	<b>7,741,162,065</b>	<b>896,740,136,947</b>
Cadangan Modal				
Sakto Laba	248,258,559,791	248,258,559,791	371,003,515,600	371,003,515,600
Belum ditentukan penggunaannya	143,574,146,209	198,407,212,255	120,037,881,301	159,897,281,932
<b>Jumlah Ekuitas</b>	<b>2,209,568,678,154</b>	<b>2,291,091,098,540</b>	<b>2,370,520,061,395</b>	<b>2,527,891,096,544</b>
<b>JUMLAH KEWAJIBAN DAN EKUITAS</b>	<b>2,380,944,127,993</b>	<b>2,479,214,449,083</b>	<b>2,568,726,984,263</b>	<b>2,882,896,183,408</b>

## LAMPIRAN V

**LAPORAN POSISI KEUANGAN (NERACA)**  
**PT. ASDP INDONESIA FERRY (PERSERO)**  
**PERIODE : TRIWULANAN TAHUN 2013**

URAIAN/TAHUN	2013			
	TRW I	TRW II	TRW III	TRW IV
<b>AKTIVA</b>				
<b>AKTIVA LANCAR</b>				
Kas dan setara kas	720,610,830,638	722,296,718,640	718,105,408,061	843,882,757,611
Investasi Jangka Pendek	0	0	0	0
Uang Muka				
Pihak Ketiga	465,770,440	465,770,440	1,204,218,275	962,525,870
Pihak-pihak berelasi	14,010,979,862	14,010,979,862	11,818,618,041	11,725,162,752
Uang muka pajak	1,803,831,666	1,349,053,422	1,306,851,761	619,437,247
Piutang				
Usaha - bersih setelah dikurangi penyisihan piutang ragu-ragu tahun	10,820,746,193	11,104,246,893	12,539,517,672	843,180,738
Piutang Pegawai	81,447,454,570	81,461,077,870	85,840,861,783	9,759,053,016
Lain-lain	344,346,807	344,745,524	464,969,611	629,983,552
Pihak hubungan istimewa		0	0	0
Pihak ketiga	62,505,920	62,107,203	27,860,785	70,312,055
Pendapatan Yang Masih Harus Diterima	16,367,081,455	16,367,081,455	18,479,143,832	22,396,526,166
Persediaan	5,828,051,179	5,828,051,179	5,966,018,179	9,684,350,279
Biaya dibayar dimuka	16,119,766,493	16,119,766,493	16,568,740,054	12,455,378,205
Aset lancar lainnya	0	0	0	0
<b>Jumlah Aktiva Lancar</b>	<b>867,881,365,222</b>	<b>869,409,598,979</b>	<b>872,322,208,054</b>	<b>913,028,667,491</b>
Aktiva pajak tangguhan				
<b>AKTIVA TIDAK LANCAR</b>				
<b>AKTIVA TETAP</b>				
Tahun 2009 dan Tahun 2014	1,956,515,020,700	1,789,538,223,278	1,888,675,831,576	1,955,529,724,929
Akumulasi penyusutan				
<b>JUMLAH AKTIVA TETAP</b>	<b>1,956,515,020,700</b>	<b>1,789,538,223,278</b>	<b>1,888,675,831,576</b>	<b>1,955,529,724,929</b>
<b>AKTIVA LAIN-LAIN</b>				
Tagihan lebih bayar pajak penghasilan	(908,707,715)	7,876,674,721	7,248,819,376	9,358,956,256
Aset tetap Sewa Pembiayaan	0	231,353,000,191	372,609,070,530	391,028,235,872
Aset Tidak Lancar Lainnya	13,503,816,488	3,073,571,682	3,780,099,431	3,813,267,453
<b>JUMLAH AKTIVA LAIN-LAIN</b>	<b>12,595,108,772</b>	<b>242,303,246,594</b>	<b>383,637,989,337</b>	<b>404,200,459,580</b>
<b>Jumlah Aktiva Tidak Lancar</b>	<b>1,969,110,129,472</b>	<b>2,031,841,469,873</b>	<b>2,272,313,820,912</b>	<b>2,359,730,184,509</b>
<b>JUMLAH AKTIVA</b>	<b>2,836,991,494,694</b>	<b>2,901,251,068,852</b>	<b>3,144,636,028,967</b>	<b>3,272,758,852,000</b>
<b>PASSIVA</b>				
<b>KEWAJIBAN LANCAR</b>				
Hutang Usaha				
Pihak yang mempunyai hubungan istimewa	9,098,439,208	15,709,296,882	5,532,981,096	9,081,573,207
Pihak ketiga	89,209,212,796	92,869,380,779	88,791,166,222	104,227,442,418
Hutang pajak	8,067,606,203	4,755,242,377	3,071,389,220	4,868,427,165
Biaya Yang Masih Harus Dibayar	46,810,249,308	51,576,929,265	73,914,026,908	78,498,040,375
Pendapatan Yang Diterima Dimuka	6,245,730,146	6,245,730,146	8,002,299,019	8,552,359,753
Kewajiban lancar lainnya	36,376,642,277	33,468,585,908	30,334,276,898	34,383,942,122
<b>Jumlah Kewajiban Lancar</b>	<b>195,807,879,938</b>	<b>204,625,165,357</b>	<b>209,646,139,363</b>	<b>239,611,785,040</b>
<b>KEWAJIBAN JANGKA PANJANG</b>				
Kewajiban Imbalan Pasca Kerja	12,997,123,852	15,817,795,821	15,817,795,821	15,817,795,821
Kewajiban Pajak Tangguhan	16,754,463,097	14,593,050,491	14,593,050,491	14,593,050,491
Liabilitas Pembiayaan Jangka Panjang	41,192,285,627	87,364,285,627	206,311,065,397	195,045,771,215
Liabilitas jangka panjang lainnya	6,808,833,303	6,253,092,390	6,243,529,564	7,781,639,352
<b>Jumlah Kewajiban Jk Panjang</b>	<b>77,752,705,879</b>	<b>124,028,224,329</b>	<b>242,965,441,273</b>	<b>233,238,256,879</b>
<b>EKUITAS</b>				
Modal saham - nilai nominal Rp 1.000.000 per lembar saham				
Modal dasar - 1.600.000 lembar saham				
Modal ditempatkan dan disetor penuh				
405.753 lembar saham	1,680,678,000,000	1,680,678,000,000	1,680,678,000,000	1,680,678,000,000
Tambahan Modal Disetor	7,741,162,065	7,741,162,065	7,741,162,065	7,741,162,065
<b>PENYERTAAN MODAL NEGARA YANG BELUM DITETAPKAN STATUSNYA</b>	<b>359,533,563,409</b>	<b>357,875,763,409</b>	<b>449,736,325,059</b>	<b>481,891,840,059</b>
Cadangan Modal	490,783,585,014	490,783,585,014	490,783,585,014	480,783,585,014
Sakdo Laba				
Belum ditentukan penggunaannya	24,812,639,390	35,519,168,678	63,085,376,193	148,814,222,943
<b>Jumlah Ekuitas</b>	<b>2,563,548,949,878</b>	<b>2,572,597,679,166</b>	<b>2,692,024,448,331</b>	<b>2,799,908,810,081</b>
<b>JUMLAH KEWAJIBAN DAN EKUITAS</b>	<b>2,837,109,535,694</b>	<b>2,901,251,068,852</b>	<b>3,144,636,028,967</b>	<b>3,272,758,852,000</b>

**LAMPIRAN VI**  
**LAPORAN POSISI KEUANGAN (NERACA)**  
**PT. ASDP INDONESIA FERRY (PERSERO)**  
**PERIODE : TRIWULANAN TAHUN 2014**

URAIAN/TAHUN	2014			
	TRW I	TRW II	TRW III	TRW IV
<b>AKTIVA</b>				
<b>AKTIVA LANCAR</b>				
Kas dan setara kas	811,502,490,989	666,613,000,240	650,329,784,791	828,239,545,884
Investasi Jangka Pendek	0	0	0	0
Uang Muka				
Pihak Ketiga	0	473,409,850	5,939,608,295	1,574,875,800
Pihak-pihak berelasi	13,507,493,913	15,174,083,392	16,675,876,820	7,068,532,353
Uang muka pajak	0	0	723,538,676	8,320,284,337
Piutang				
Usaha - bersih setelah dikurangi penyisihan piutang ragu-ragu tahun	48,572,087,724	101,615,539,606	158,176,979,898	709,191,937
Piutang Pegawai	9,832,018,536	7,980,877,143	5,711,039,742	9,705,668,821
Lain-lain	974,813,216	1,029,964,066	908,344,546	1,156,727,856
Pihak hubungan istimewa		0	0	0
Pihak ketiga	75,097,400	72,836,850	133,193,850	54,000,002
Pendapatan Yang Masih Harus Diterima	19,783,135,149	21,028,607,511	22,576,535,894	16,986,470,889
Persediaan	7,322,994,989	13,817,680,123	11,683,425,491	43,911,410,307
Biaya dibayar dimuka	12,644,097,216	21,546,245,569	22,092,330,005	7,139,277,950
Aset lancar lainnya	0	0	0	30,793,425,000
<b>Jumlah Aktiva Lancar</b>	<b>924,214,229,132</b>	<b>849,352,244,349</b>	<b>894,950,658,009</b>	<b>955,659,411,137</b>
Aktiva pajak tangguhan				
<b>AKTIVA TIDAK LANCAR</b>				
<b>AKTIVA TETAP</b>				
Tahun 2009 dan Tahun 2014 Akumulasi penyusutan	1,943,434,713,428	1,928,961,767,181	1,997,261,610,688	2,025,249,019,015
<b>JUMLAH AKTIVA TETAP</b>	<b>1,943,434,713,428</b>	<b>1,928,961,767,181</b>	<b>1,997,261,610,688</b>	<b>2,025,249,019,015</b>
<b>AKTIVA LAIN-LAIN</b>				
Tagihan lebih bayar pajak penghasilan	0	0	0	0
Aset tetap Sewa Pembiayaan	403,798,559,073	408,391,509,044	415,121,759,753	419,569,513,900
Aset Tidak Lancar Lainnya	4,033,178,517	3,572,251,290	3,223,963,461	3,605,469,164
<b>JUMLAH AKTIVA LAIN-LAIN</b>	<b>407,831,737,590</b>	<b>411,963,760,334</b>	<b>418,345,723,213</b>	<b>423,174,983,064</b>
<b>Jumlah Aktiva Tidak Lancar</b>	<b>2,351,266,451,018</b>	<b>2,340,925,527,515</b>	<b>2,415,607,333,901</b>	<b>2,448,424,002,079</b>
<b>JUMLAH AKTIVA</b>	<b>3,275,480,680,150</b>	<b>3,190,277,771,864</b>	<b>3,310,557,991,910</b>	<b>3,404,083,413,215</b>
<b>PASSIVA</b>				
<b>KEWAJIBAN LANCAR</b>				
Hutang Usaha				
Pihak yang mempunyai hubungan istimewa	12,368,059,931	12,211,745,622	11,773,676,321	21,309,666,254
Pihak ketiga	78,968,562,413	70,953,703,839	74,834,451,443	105,503,733,370
Hutang pajak	3,784,671,524	3,545,665,269	4,658,549,078	14,302,657,041
Biaya Yang Masih Harus Dibayar	86,350,572,909	49,385,484,195	67,521,455,568	73,923,970,189
Pendapatan Yang Diterima Dimuka	9,243,402,355	10,906,518,130	12,154,395,680	849,870,653
Kewajiban lancar lainnya	35,911,295,766	34,589,794,862	39,686,433,846	44,085,515,164
<b>Jumlah Kewajiban Lancar</b>	<b>226,626,564,897</b>	<b>181,592,911,918</b>	<b>210,628,961,935</b>	<b>259,975,412,670</b>
<b>KEWAJIBAN JANGKA PANJANG</b>				
Kewajiban Imbalan Pasca Kerja	17,426,878,470	17,426,878,470	17,426,878,470	19,519,283,147
Kewajiban Pajak Tangguhan	16,870,507,872	16,870,507,872	16,870,507,872	18,862,526,769
Liabilitas Pembiayaan Jangka Panjang	183,992,070,554	171,617,481,049	159,014,929,684	146,028,392,775
Liabilitas jangka panjang lainnya	7,080,988,778	7,074,301,877	6,130,691,883	1,631,219,733
<b>Jumlah Kewajiban Jk Panjang</b>	<b>225,370,445,674</b>	<b>212,989,169,268</b>	<b>199,443,007,909</b>	<b>186,041,422,424</b>
<b>EKUITAS</b>				
Modal saham - nilai nominal Rp 1.000.000 per lembar saham				
Modal dasar - 1.600.000 lembar saham				
Modal ditempatkan dan disetor penuh				
405.753 lembar saham	1,680,678,000,000	1,989,250,000,000	1,989,250,000,000	1,989,250,000,000
Tambahan Modal Disetor	7,741,162,065	7,741,162,065	7,741,162,065	7,741,162,065
<b>PENYERTAAN MODAL NEGARA YANG BELUM DITETAPKAN STATUSNYA</b>	<b>481,891,840,059</b>	<b>173,320,159,150</b>	<b>230,289,994,150</b>	<b>230,289,994,150</b>
Cadangan Modal	480,783,585,014	586,562,717,668	586,562,717,668	563,895,717,668
Sakdo Laba				
Belum ditentukan penggunaannya	173,089,085,407	39,642,986,885	86,642,148,183	166,889,704,238
<b>Jumlah Ekuitas</b>	<b>2,824,183,672,545</b>	<b>2,796,517,025,768</b>	<b>2,900,486,022,066</b>	<b>2,958,066,578,121</b>
<b>JUMLAH KEWAJIBAN DAN EKUITAS</b>	<b>3,276,180,683,116</b>	<b>3,191,099,106,954</b>	<b>3,310,557,991,910</b>	<b>3,404,083,413,215</b>

## LAMPIRAN VII

### LAPORAN LABA (RUGI)

#### PT. ASDP INDONESIA FERRY (PERSERO)

#### PERIODE : TRIWULANAN TAHUN 2009

URAIAN/TAHUN	2009			
	TRW I	TRW II	TRW III	TRW IV
<b>PENDAPATAN</b>				
Usaha Penyeberangan	131,422,158,213	239,158,560,880	327,836,733,075	532,625,620,287
Usaha Pelabuhan	63,598,591,594	129,747,831,703	174,785,497,477	272,654,922,990
Aneka Usaha Jasa	17,288,100,000	37,467,327,273	51,076,963,636	78,891,872,727
Jumlah Pendapatan Usaha	<b>212,308,849,807</b>	<b>406,373,719,856</b>	<b>553,699,194,188</b>	<b>884,172,416,004</b>
<b>BEBAN POKOK</b>				
Usaha Penyeberangan	94,193,077,764	197,578,907,452	272,993,746,349	443,515,235,039
Usaha Pelabuhan	25,806,832,262	51,324,241,283	66,984,709,188	110,363,033,993
Aneka Usaha Jasa	18,419,045,011	36,734,100,382	50,331,977,309	77,643,350,418
Jumlah Beban Pokok	<b>138,418,955,037</b>	<b>285,637,249,116</b>	<b>390,310,432,847</b>	<b>631,521,619,449</b>
<b>LABA BRUTO</b>	<b>73,889,894,770</b>	<b>120,736,470,739</b>	<b>163,388,761,341</b>	<b>252,650,796,555</b>
<b>BEBAN USAHA</b>				
Umum & Administrasi	43,616,749,297	94,926,129,505	130,561,336,064	222,943,321,365
Penjualan	1,031,652,978	2,008,198,449	2,873,894,582	4,462,797,719
Beban Lain-lain				
Jumlah Beban Usaha	44,648,402,275	96,934,327,954	133,435,230,645	227,406,119,084
<b>LABA RUGI USAHA</b>	<b>29,241,492,495</b>	<b>23,802,142,785</b>	<b>29,953,530,696</b>	<b>25,244,677,471</b>
<b>PENDAPATAN (BEBAN) LAIN-LAIN</b>				
Pendapatan Bunga	7,712,100,229	16,094,203,160	21,840,880,367	31,440,483,240
Pendapatan Klaim Asuransi	149,034,606	1,241,010,262	0	0
Penghapusan aktiva	491,963	0	0	(1,315,883,492)
Sumbangan	(503,637,234)	(686,536,681)	(950,058,821)	(2,017,778,200)
Kenaikan (Penurunan) Surat Berharga			0	0
Lain-lain (bersih)	2,602,326,979	(1,763,874,325)	(603,847,065)	11,251,427,650
Jumlah Pendapatan (Beban) Lain-lain - bersih	<b>9,960,316,544</b>	<b>14,884,802,416</b>	<b>20,286,974,481</b>	<b>39,358,249,198</b>
<b>LABA (RUGI) SEBELUM MANFAAT (BEBAN) PAJAK</b>	<b>39,201,809,039</b>	<b>38,686,945,201</b>	<b>50,240,505,177</b>	<b>64,602,926,669</b>
<b>MANFAAT (BEBAN) PAJAK</b>				
Pajak Kini	(1,558,738,440)	(1,343,490,120)	(2,449,015,800)	(2,448,650,680)
Pajak Tanguhan				(757,487,883)
Pajak Final				
Jumlah Manfaat (Beban) Pajak	<b>(1,558,738,440)</b>	<b>(1,343,490,120)</b>	<b>(2,449,015,800)</b>	<b>(3,206,138,563)</b>
<b>LABA (RUGI) BERSIH</b>	<b>37,643,070,599</b>	<b>37,343,455,081</b>	<b>47,791,489,377</b>	<b>61,396,788,105</b>

## LAMPIRAN VIII

### LAPORAN LABA (RUGI)

#### PT. ASDP INDONESIA FERRY (PERSERO)

#### PERIODE : TRIWULANAN TAHUN 2010

URAIAN/TAHUN	2010			
	TRW I	TRW II	TRW III	TRW IV
<b>PENDAPATAN</b>				
Usaha Penyeberangan	119,870,652,922	247,126,201,986	404,397,742,223	567,582,567,435
Usaha Pelabuhan	58,668,387,087	123,833,144,873	197,052,519,716	269,775,781,472
Aneka Usaha Jasa	20,445,614,029	38,962,713,050	61,943,989,633	84,301,581,967
Jumlah Pendapatan Usaha	<b>198,984,654,038</b>	<b>409,922,059,908</b>	<b>663,394,251,572</b>	<b>921,659,930,874</b>
<b>BEBAN POKOK</b>				
Usaha Penyeberangan	99,135,187,250	222,352,048,957	343,461,856,654	485,132,876,908
Usaha Pelabuhan	22,429,555,289	49,694,614,098	79,101,133,042	107,959,794,651
Aneka Usaha Jasa	17,955,375,982	33,859,402,077	53,314,590,993	72,260,906,876
Jumlah Beban Pokok	<b>139,520,118,521</b>	<b>305,906,065,133</b>	<b>475,877,580,689</b>	<b>665,353,578,435</b>
<b>LABA BRUTO</b>	<b>59,464,535,517</b>	<b>104,015,994,775</b>	<b>187,516,670,883</b>	<b>256,306,352,439</b>
<b>BEBAN USAHA</b>				
Umum & Administrasi	39,086,145,576	86,195,347,335	139,360,562,068	201,595,935,531
Penjualan	342,000,214	660,983,864	945,604,858	1,627,681,351
Beban Lain-lain				
Jumlah Beban Usaha	<b>39,428,145,790</b>	<b>86,856,331,199</b>	<b>140,306,166,926</b>	<b>203,223,616,882</b>
<b>LABA RUGI USAHA</b>	<b>20,036,389,727</b>	<b>17,159,663,577</b>	<b>47,210,503,956</b>	<b>53,082,735,556</b>
<b>PENDAPATAN (BEBAN) LAIN-LAIN</b>				
Pendapatan Bunga	7,211,752,359	14,329,194,048	21,620,885,994	29,063,224,281
Pendapatan Klaim Asuransi				
Penghapusan aktiva				
Sumbangan	(477,348,406)	(704,754,859)	(1,158,898,701)	(1,644,363,686)
Kenaikan (Penurunan) Surat Berharga				
Lain-lain (bersih)	(1,011,532,097)	(698,545,662)	605,117,596	(700,484,352)
Jumlah Pendapatan (Beban) Lain-lain - bersih	<b>5,722,871,856</b>	<b>12,925,893,527</b>	<b>21,067,104,888</b>	<b>26,718,376,243</b>
<b>LABA (RUGI) SEBELUM MANFAAT (BEBAN) PAJAK</b>	<b>25,759,261,583</b>	<b>30,085,557,103</b>	<b>68,277,608,845</b>	<b>79,801,111,800</b>
<b>MANFAAT (BEBAN) PAJAK</b>				
Pajak Kini	(1,784,177,000)	(2,396,516,750)	(3,430,278,000)	(6,311,060,250)
Pajak Tanggihan				(100,690,833)
Pajak Final				
Jumlah Manfaat (Beban) Pajak	<b>(1,784,177,000)</b>	<b>(2,396,516,750)</b>	<b>(3,430,278,000)</b>	<b>(6,411,751,083)</b>
<b>LABA (RUGI) BERSIH</b>	<b>23,975,084,583</b>	<b>27,689,040,353</b>	<b>64,847,330,845</b>	<b>73,389,360,717</b>



## LAMPIRAN IX

### LAPORAN LABA (RUGI)

#### PT. ASDP INDONESIA FERRY (PERSERO)

#### PERIODE : TRIWULANAN TAHUN 2011

URAIAN/TAHUN	2011			
	TRW I	TRW II	TRW III	TRW IV
<b>PENDAPATAN</b>				
Usaha Penyeberangan	137,145,440,136	294,474,176,124	480,285,481,681	686,647,813,636
Usaha Pelabuhan	70,250,554,719	148,679,845,225	234,995,105,639	319,643,383,350
Aneka Usaha Jasa	29,306,156,837	67,195,621,102	113,452,551,099	156,179,730,887
Jumlah Pendapatan Usaha	<b>236,702,151,692</b>	<b>510,349,642,450</b>	<b>828,733,138,420</b>	<b>1,162,470,927,872</b>
<b>BEBAN POKOK</b>				
Usaha Penyeberangan	113,152,297,020	257,373,810,405	397,389,807,683	557,341,166,995
Usaha Pelabuhan	26,578,482,461	56,653,214,385	92,813,967,805	132,264,022,745
Aneka Usaha Jasa	25,982,556,894	60,016,554,705	101,754,013,618	140,275,782,770
Jumlah Beban Pokok	<b>165,713,336,375</b>	<b>374,043,579,495</b>	<b>591,957,789,106</b>	<b>829,880,972,510</b>
<b>LABA BRUTO</b>	<b>70,988,815,317</b>	<b>136,306,062,955</b>	<b>236,775,349,314</b>	<b>332,589,955,362</b>
<b>BEBAN USAHA</b>				
Umum & Administrasi	48,826,594,869	103,842,969,587	170,865,776,681	246,057,387,124
Penjualan	459,397,923	1,270,054,366	1,016,267,111	1,473,513,425
Beban Lain-lain			0	-
Jumlah Beban Usaha	<b>49,285,992,792</b>	<b>105,113,023,953</b>	<b>171,882,043,792</b>	<b>247,530,900,549</b>
<b>LABA RUGI USAHA</b>	<b>21,702,822,525</b>	<b>31,193,039,002</b>	<b>64,893,305,522</b>	<b>85,059,054,813</b>
<b>PENDAPATAN (BEBAN) LAIN-LAIN</b>				
Pendapatan Bunga	8,524,795,410	18,192,381,566	28,096,312,894	38,290,414,368
Pendapatan Klaim Asuransi				
Penghapusan aktiva				
Sumbangan	(376,500,265)	(786,545,939)	(1,514,155,058)	(2,508,346,465)
Kenaikan (Penurunan) Surat Berharga				
Lain-lain (bersih)	714,946,157	913,555,970	1,149,323,215	1,634,802,739
Jumlah Pendapatan (Beban) Lain-lain - bersih	<b>8,863,241,301</b>	<b>18,319,391,597</b>	<b>27,731,481,051</b>	<b>37,416,870,642</b>
<b>LABA (RUGI) SEBELUM MANFAAT (BEBAN) PAJAK</b>	<b>30,566,063,826</b>	<b>49,512,430,599</b>	<b>92,624,786,573</b>	<b>122,475,925,455</b>
<b>MANFAAT (BEBAN) PAJAK</b>				
Pajak Kini	(1,491,360,250)	(3,543,910,500)	(4,639,897,000)	(7,269,132,250)
Pajak Tanguhan		(506,272,928)	(531,849,000)	(978,619,032)
Pajak Final				-
Jumlah Manfaat (Beban) Pajak	<b>(1,491,360,250)</b>	<b>(4,050,183,428)</b>	<b>(5,171,746,000)</b>	<b>(8,247,751,282)</b>
<b>LABA (RUGI) BERSIH</b>	<b>29,074,703,576</b>	<b>45,462,247,171</b>	<b>87,453,040,573</b>	<b>114,228,174,173</b>

## LAMPIRAN X

### LAPORAN LABA (RUGI)

#### PT. ASDP INDONESIA FERRY (PERSERO)

#### PERIODE : TRIWULANAN TAHUN 2012

URAIAN/TAHUN	2012			
	TRW I	TRW II	TRW III	TRW IV
<b>PENDAPATAN</b>				
Usaha Penyeberangan	162,300,568,308	360,824,257,046	574,802,117,258	807,621,333,222
Usaha Pelabuhan	80,337,587,283	168,602,706,758	265,877,749,346	360,727,278,322
Aneka Usaha Jasa	56,055,500,842	109,392,002,807	177,311,273,548	235,859,101,528
Jumlah Pendapatan Usaha	<b>298,693,656,433</b>	<b>638,818,966,610</b>	<b>1,017,991,140,152</b>	<b>1,404,207,713,073</b>
<b>BEBAN POKOK</b>				
Usaha Penyeberangan	137,018,486,136	295,240,971,398	459,238,975,478	641,588,031,657
Usaha Pelabuhan	33,968,330,941	71,226,887,916	108,606,283,757	151,879,452,241
Aneka Usaha Jasa	50,969,531,625	99,199,766,704	161,041,241,853	214,253,861,884
Jumlah Beban Pokok	<b>221,956,348,702</b>	<b>465,667,626,017</b>	<b>728,886,501,088</b>	<b>1,007,721,345,782</b>
<b>LABA BRUTO</b>	<b>76,737,307,731</b>	<b>173,151,340,593</b>	<b>289,104,639,064</b>	<b>396,486,367,291</b>
<b>BEBAN USAHA</b>				
Umum & Administrasi	55,310,908,238	115,367,877,420	183,990,483,529	245,230,872,630
Penjualan	174,650,174	525,429,902	757,999,197	1,660,004,677
Beban Lain-lain		2,684,022,605	3,717,565,340	-
Jumlah Beban Usaha	<b>55,485,558,412</b>	<b>118,577,329,927</b>	<b>188,466,048,066</b>	<b>246,890,877,307</b>
<b>LABA RUGI USAHA</b>	<b>21,251,749,319</b>	<b>54,574,010,666</b>	<b>100,638,590,998</b>	<b>149,595,489,984</b>
<b>PENDAPATAN (BEBAN) LAIN-LAIN</b>				
Pendapatan Bunga	10,352,333,785	19,909,514,441	29,722,648,122	39,331,271,542
Pendapatan Klaim Asuransi				
Penghapusan aktiva				
Sumbangan	(491,955,647)	0	0	0
Kenaikan (Penurunan) Surat Berharga				
Lain-lain (bersih)	(393,469,102)	0	0	0
Jumlah Pendapatan (Beban) Lain-lain - bersih	<b>9,466,909,036</b>	<b>19,909,514,441</b>	<b>29,722,648,122</b>	<b>39,331,271,542</b>
<b>LABA (RUGI) SEBELUM MANFAAT (BEBAN) PAJAK</b>	<b>30,718,658,355</b>	<b>74,483,525,107</b>	<b>130,361,239,120</b>	<b>188,926,761,526</b>
<b>MANFAAT (BEBAN) PAJAK</b>				
Pajak Kini	(1,562,483,750)	(4,125,439,250)	(8,951,190,250)	(8,388,852,750)
Pajak Tangguhan			-1561965000	(2,688,705,062)
Pajak Final				(18,141,719,212.25)
Jumlah Manfaat (Beban) Pajak	<b>(1,562,483,750)</b>	<b>(4,125,439,250)</b>	<b>(10,513,155,250)</b>	<b>(29,219,277,024)</b>
<b>LABA (RUGI) BERSIH</b>	<b>29,156,174,605</b>	<b>70,358,085,857</b>	<b>119,848,083,870</b>	<b>159,707,484,502</b>

## LAMPIRAN XI

## LAPORAN LABA (RUGI)

## PT. ASDP INDONESIA FERRY (PERSERO)

## PERIODE : TRIWULANAN TAHUN 2013

URAIAN/TAHUN	2013			
	TRW I	TRW II	TRW III	TRW IV
<b>PENDAPATAN</b>				
Usaha Penyeberangan	402,980,393,334	402,980,393,334	664,504,625,455	977,832,793,722
Usaha Pelabuhan	176,260,691,285	176,260,691,285	275,325,245,691	374,583,475,055
Aneka Usaha Jasa	129,376,505,216	129,376,505,216	226,902,957,239	324,668,662,563
Jumlah Pendapatan Usaha	<b>708,617,589,835</b>	<b>708,617,589,835</b>	<b>1,166,732,828,385</b>	<b>1,677,084,931,341</b>
<b>BEBAN POKOK</b>				
Usaha Penyeberangan	349,094,504,639	349,145,036,940	557,464,332,086	776,464,598,957
Usaha Pelabuhan	76,297,553,917	76,107,765,562	125,411,293,110	166,696,470,037
Aneka Usaha Jasa	118,641,254,113	118,641,254,113	209,588,311,399	299,913,173,811
Jumlah Beban Pokok	<b>544,033,312,669</b>	<b>543,894,056,614</b>	<b>892,463,936,595</b>	<b>1,243,074,242,805</b>
<b>LABA BRUTO</b>	<b>164,584,277,166</b>	<b>164,723,533,221</b>	<b>274,268,891,790</b>	<b>434,010,688,536</b>
<b>BEBAN USAHA</b>				
Umum & Administrasi	144,033,031,510	136,108,075,531	217,633,851,534	292,928,713,376
Penjualan	837,629,221	837,629,221	2,851,968,429	5,801,054,748
Beban Lain-lain	2,958,762,105			
Jumlah Beban Usaha	<b>147,829,422,836</b>	<b>136,945,704,752</b>	<b>220,485,819,963</b>	<b>298,729,768,124</b>
<b>LABA RUGI USAHA</b>	<b>16,754,854,331</b>	<b>27,777,828,469</b>	<b>53,783,071,827</b>	<b>135,280,920,412</b>
<b>PENDAPATAN (BEBAN) LAIN-LAIN</b>				
Pendapatan Bunga	20,747,356,169	20,747,356,169	30,525,894,278	48,600,189,870
Pendapatan Klaim Asuransi				
Penghapusan aktiva				
Sumbangan	0	0	0	0
Kenaikan (Penurunan) Surat Berharga				
Lain-lain (bersih)	0	(2,958,762,105)	(3,875,272,767)	(6,287,097,012)
Jumlah Pendapatan (Beban) Lain-lain - bersih	<b>20,747,356,169</b>	<b>17,788,594,063</b>	<b>26,650,621,512</b>	<b>42,313,092,857</b>
<b>LABA (RUGI) SEBELUM MANFAAT (BEBAN) PAJAK</b>	<b>37,502,210,499</b>	<b>45,566,422,533</b>	<b>80,433,693,339</b>	<b>177,594,013,269</b>
<b>MANFAAT (BEBAN) PAJAK</b>				
Pajak Kini	2,172,839,250	(2,172,839,250)	(4,306,387,250)	(8,155,791,000)
Pajak Tangguhan				
Pajak Final	0	(8,064,212,034)	(13,231,727,325)	(20,813,796,755)
Jumlah Manfaat (Beban) Pajak	<b>2,172,839,250</b>	<b>(10,237,051,284)</b>	<b>(17,538,114,575)</b>	<b>(28,969,587,755)</b>
<b>LABA (RUGI) BERSIH</b>	<b>35,329,371,249</b>	<b>35,329,371,249</b>	<b>62,895,578,764</b>	<b>148,624,425,514</b>

## LAMPIRAN XII

## LAPORAN LABA (RUGI)

## PT. ASDP INDONESIA FERRY (PERSERO)

## PERIODE : TRIWULANAN TAHUN 2014

URAIAN/TAHUN	2014			
	TRW I	TRW II	TRW III	TRW IV
<b>PENDAPATAN</b>				
Usaha Penyeberangan	234,292,333,936	492,527,066,119	797,957,700,185	1,137,612,564,028
Usaha Pelabuhan	93,172,904,820	192,656,229,129	304,767,631,763	426,207,649,564
Aneka Usaha Jasa	97,053,440,336	196,907,662,030	302,867,136,115	360,213,767,453
Jumlah Pendapatan Usaha	<b>424,518,679,092</b>	<b>882,090,957,278</b>	<b>1,405,592,468,064</b>	<b>1,924,033,981,046</b>
<b>BEBAN POKOK</b>				
Usaha Penyeberangan	196,009,654,667	428,267,352,033	669,755,374,637	918,989,055,284
Usaha Pelabuhan	44,885,639,074	91,131,351,582	148,910,031,143	204,063,201,616
Aneka Usaha Jasa	90,157,083,747	182,993,600,558	280,598,292,967	330,568,802,677
Jumlah Beban Pokok	<b>331,052,377,489</b>	<b>702,392,304,173</b>	<b>1,099,263,698,748</b>	<b>1,453,621,059,578</b>
<b>LABA BRUTO</b>	<b>93,466,301,604</b>	<b>179,698,653,104</b>	<b>306,328,769,316</b>	<b>470,412,921,468</b>
<b>BEBAN USAHA</b>				
Umum & Administrasi	76,192,914,758	149,995,285,874	242,160,858,911	333,702,570,755
Penjualan	413,102,460	878,870,460	1,695,978,741	2,927,501,445
Beban Lain-lain				
Jumlah Beban Usaha	76,606,017,218	150,874,156,334	243,856,837,652	336,630,072,200
<b>LABA RUGI USAHA</b>	<b>16,860,284,386</b>	<b>28,824,496,770</b>	<b>62,471,931,664</b>	<b>133,782,849,269</b>
<b>PENDAPATAN (BEBAN) LAIN-LAIN</b>				
Pendapatan Bunga	10,402,631,234	27,382,531,086	50,513,351,563	78,537,773,818
Pendapatan Klaim Asuransi				
Penghapusan aktiva				
Sumbangan	0	0	0	0
Kenaikan (Penurunan) Surat Berharga				
Lain-lain (bersih)	0	(4,087,176,642)	(6,828,284,033)	(10,950,143,922)
Jumlah Pendapatan (Beban) Lain-lain - bersih	<b>10,402,631,234</b>	<b>23,295,354,444</b>	<b>43,685,067,530</b>	<b>67,587,629,897</b>
<b>LABA (RUGI) SEBELUM MANFAAT (BEBAN) PAJAK</b>	<b>27,262,915,620</b>	<b>52,119,851,214</b>	<b>106,156,999,194</b>	<b>201,370,479,165</b>
<b>MANFAAT (BEBAN) PAJAK</b>				
Pajak Kini	(723,712,750)	(3,296,815,750)	(5,462,814,250)	(9,232,075,750)
Pajak Tanggahan				(1,992,018,897)
Pajak Final	(4,754,366,637)	(9,369,846,008)	(14,241,834,191)	(23,446,477,710)
Jumlah Manfaat (Beban) Pajak	<b>(5,478,079,387)</b>	<b>(12,666,661,758)</b>	<b>(19,704,648,441)</b>	<b>(34,670,572,357)</b>
<b>LABA (RUGI) BERSIH</b>	<b>21,784,836,233</b>	<b>39,453,189,456</b>	<b>86,452,350,753</b>	<b>166,699,906,809</b>

**LAMPIRAN XIII**

**ROA, CURRENT RATIO, TATO, DAR, SALES DAN SIZE**

**PT. ASDP INDONESIA FERRY (PERSERO)**

**PERIODE : TRIWULANAN TAHUN 2009 - 2014**

PERIODE	ROA	CR	TATO	DAR	Sales	Size
TRW I Th 2009	0.026	4.911	0.145	0.082	11.327	12.167
TRW II Th 2009	0.025	4.499	0.275	0.095	11.609	12.169
TRW III Th 2009	0.032	4.092	0.372	0.098	11.743	12.173
TRW IV Th 2009	0.038	3.585	0.546	0.111	11.947	12.209
TRW I Th 2010	0.014	4.174	0.120	0.094	11.299	12.221
TRW II Th 2010	0.016	3.997	0.242	0.104	11.613	12.229
TRW III Th 2010	0.035	5.196	0.359	0.079	11.822	12.267
TRW IV Th 2010	0.039	4.837	0.488	0.084	11.965	12.276
TRW I Th 2011	0.015	6.217	0.125	0.070	11.374	12.277
TRW II Th 2011	0.022	5.595	0.250	0.075	11.708	12.309
TRW III Th 2011	0.039	5.368	0.373	0.074	11.918	12.347
TRW IV Th 2011	0.050	5.622	0.513	0.082	12.065	12.355
TRW I Th 2012	0.012	6.501	0.125	0.072	11.475	12.377
TRW II Th 2012	0.028	5.723	0.258	0.076	11.805	12.394
TRW III Th 2012	0.047	5.668	0.396	0.077	12.008	12.410
TRW IV Th 2012	0.055	4.185	0.527	0.123	12.147	12.460
TRW I Th 2013	0.012	4.432	0.250	0.096	11.850	12.453
TRW II Th 2013	0.012	4.249	0.244	0.113	11.850	12.463
TRW III Th 2013	0.020	4.161	0.371	0.144	12.067	12.498
TRW IV Th 2013	0.045	3.810	0.512	0.144	12.225	12.515
TRW I Th 2014	0.007	4.078	0.130	0.138	11.628	12.515
TRW II Th 2014	0.012	4.677	0.276	0.124	11.946	12.504
TRW III Th 2014	0.026	4.249	0.425	0.124	12.148	12.520
TRW IV Th 2014	0.049	3.676	0.565	0.131	12.284	12.532

## LAMPIRAN XIV

## TABEL DURBIN WATSON

n	k=1		k=2		k=3		k=4		k=5	
	dL	dU	dL	dU	dL	dU	dL	dU	dL	dU
6	0.6102	1.4002								
7	0.6996	1.3564	0.4672	1.8964						
8	0.7629	1.3324	0.5591	1.7771	0.3674	2.2866				
9	0.8243	1.3199	0.6291	1.6993	0.4548	2.1282	0.2957	2.5881		
10	0.8791	1.3197	0.6972	1.6413	0.5253	2.0163	0.3760	2.4137	0.2427	2.8217
11	0.9273	1.3241	0.7580	1.6044	0.5948	1.9280	0.4441	2.2833	0.3155	2.6446
12	0.9708	1.3314	0.8122	1.5794	0.6577	1.8640	0.5120	2.1766	0.3796	2.5061
13	1.0097	1.3404	0.8612	1.5621	0.7147	1.8159	0.5745	2.0943	0.4445	2.3897
14	1.0450	1.3503	0.9054	1.5507	0.7667	1.7788	0.6321	2.0296	0.5052	2.2959
15	1.0770	1.3605	0.9455	1.5432	0.8140	1.7501	0.6852	1.9774	0.5620	2.2198
16	1.1062	1.3709	0.9820	1.5386	0.8572	1.7277	0.7340	1.9351	0.6150	2.1567
17	1.1330	1.3812	1.0154	1.5361	0.8968	1.7101	0.7790	1.9005	0.6641	2.1041
18	1.1576	1.3913	1.0461	1.5353	0.9331	1.6961	0.8204	1.8719	0.7098	2.0600
19	1.1804	1.4012	1.0743	1.5355	0.9666	1.6851	0.8588	1.8482	0.7523	2.0226
20	1.2015	1.4107	1.1004	1.5367	0.9976	1.6763	0.8943	1.8283	0.7918	1.9908
21	1.2212	1.4200	1.1246	1.5385	1.0262	1.6694	0.9272	1.8116	0.8286	1.9635
22	1.2395	1.4289	1.1471	1.5408	1.0529	1.6640	0.9578	1.7974	0.8629	1.9400
23	1.2567	1.4375	1.1682	1.5435	1.0778	1.6597	0.9864	1.7855	0.8949	1.9196
24	1.2728	1.4458	1.1878	1.5464	1.1010	1.6565	1.0131	1.7753	0.9249	1.9018
25	1.2879	1.4537	1.2063	1.5495	1.1228	1.6540	1.0381	1.7666	0.9530	1.8863
26	1.3022	1.4614	1.2236	1.5528	1.1432	1.6523	1.0616	1.7591	0.9794	1.8727
27	1.3157	1.4688	1.2399	1.5562	1.1624	1.6510	1.0836	1.7527	1.0042	1.8608
28	1.3284	1.4759	1.2553	1.5596	1.1805	1.6503	1.1044	1.7473	1.0276	1.8502
29	1.3405	1.4828	1.2699	1.5631	1.1976	1.6499	1.1241	1.7426	1.0497	1.8409
30	1.3520	1.4894	1.2837	1.5666	1.2138	1.6498	1.1426	1.7386	1.0706	1.8326
31	1.3630	1.4957	1.2969	1.5701	1.2292	1.6500	1.1602	1.7352	1.0904	1.8252
32	1.3734	1.5019	1.3093	1.5736	1.2437	1.6505	1.1769	1.7323	1.1092	1.8187
33	1.3834	1.5078	1.3212	1.5770	1.2576	1.6511	1.1927	1.7298	1.1270	1.8128
34	1.3929	1.5136	1.3325	1.5805	1.2707	1.6519	1.2078	1.7277	1.1439	1.8076
35	1.4019	1.5191	1.3433	1.5838	1.2833	1.6528	1.2221	1.7259	1.1601	1.8029
36	1.4107	1.5245	1.3537	1.5872	1.2953	1.6539	1.2358	1.7245	1.1755	1.7987
37	1.4190	1.5297	1.3635	1.5904	1.3068	1.6550	1.2489	1.7233	1.1901	1.7950
38	1.4270	1.5348	1.3730	1.5937	1.3177	1.6563	1.2614	1.7223	1.2042	1.7916
39	1.4347	1.5396	1.3821	1.5969	1.3283	1.6575	1.2734	1.7215	1.2176	1.7886
40	1.4421	1.5444	1.3908	1.6000	1.3384	1.6589	1.2848	1.7209	1.2305	1.7859
41	1.4493	1.5490	1.3992	1.6031	1.3480	1.6603	1.2958	1.7205	1.2428	1.7835
42	1.4562	1.5534	1.4073	1.6061	1.3573	1.6617	1.3064	1.7202	1.2546	1.7814
43	1.4628	1.5577	1.4151	1.6091	1.3663	1.6632	1.3166	1.7200	1.2660	1.7794
44	1.4692	1.5619	1.4226	1.6120	1.3749	1.6647	1.3263	1.7200	1.2769	1.7777
45	1.4754	1.5660	1.4298	1.6148	1.3832	1.6662	1.3357	1.7200	1.2874	1.7762
46	1.4814	1.5700	1.4368	1.6176	1.3912	1.6677	1.3448	1.7201	1.2976	1.7748
47	1.4872	1.5739	1.4435	1.6204	1.3989	1.6692	1.3535	1.7203	1.3073	1.7736
48	1.4928	1.5776	1.4500	1.6231	1.4064	1.6708	1.3619	1.7206	1.3167	1.7725

## LAMPIRAN XV : DESKRIPSI STATISTIK

Date: 06/30/15

Time: 15:28

Sample: 2009Q1 2014Q4

	ROA	CR	LTATO	LDAR	SALES	SIZE
Mean	0.028449	4.721354	0.318404	0.099087	11.84766	12.36829
Median	0.026114	4.432311	0.276493	0.094663	11.85041	12.37675
Maximum	0.055398	6.501056	0.545917	0.144481	12.28421	12.53200
Minimum	0.006649	3.585072	0.119750	0.069521	11.29882	12.16882
Std. Dev.	0.014738	0.841115	0.140636	0.024194	0.263651	0.122633
Skewness	0.268725	0.594064	0.109603	0.559578	-0.366935	-0.177300
Kurtosis	1.771993	2.168404	1.834564	2.033739	2.435733	1.639167
Jarque-Bera	1.721983	2.015567	1.347696	2.095080	0.821255	1.895208
Probability	0.422743	0.365027	0.509743	0.350800	0.663234	0.387669
Sum	0.654335	108.5911	7.323285	2.279009	272.4961	284.4707
Sum Sq. Dev.	0.004779	15.56443	0.435129	0.012878	1.529266	0.330856
Observations	23	23	23	23	23	23

Sumber : Hasil olahan perhitungan Eviews 8

UNIVERSITAS  
MERCU BUANA

## LAMPIRAN XVI : PERSAMAAN I MODEL OLS TAHUN 2009-2010

Dependent Variable: ROA

Method: Least Squares

Date: 06/30/15 Time: 16:06

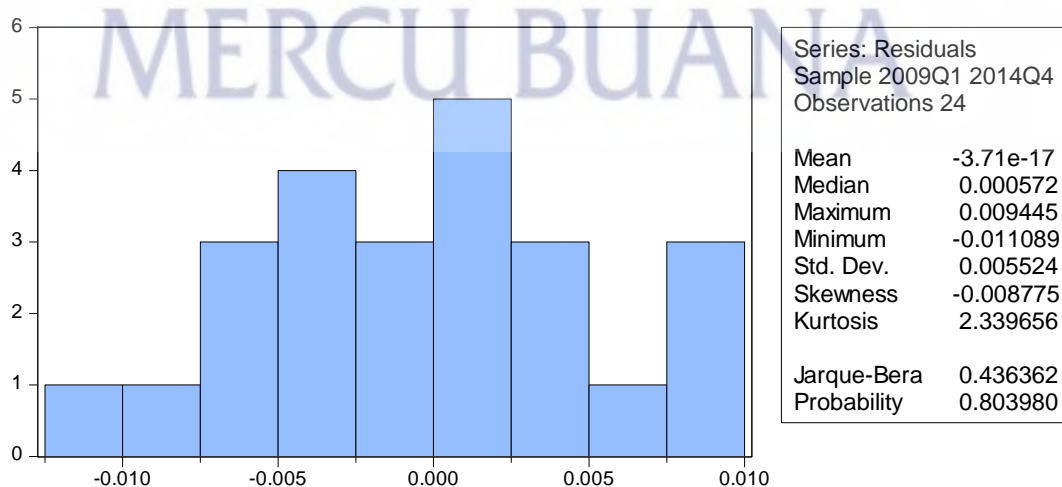
Sample: 2009Q1 2014Q4

Included observations: 24

Variable	Coefficient	Std. Error	t-Statistic	Prob.
C	0.013039	0.215299	0.060564	0.9524
CURRENT_RATIO	0.001647	0.004013	0.410304	0.6864
TATO	0.169506	0.039869	4.251632	0.0005
DAR	-0.142861	0.162827	-0.877383	0.3918
SALES	-0.049686	0.026454	-1.878181	0.0767
SIZE	0.044799	0.035320	1.268390	0.2208

R-squared	0.853352	Mean dependent var	0.028332
Adjusted R-squared	0.812617	S.D. dependent var	0.014425
S.E. of regression	0.006244	Akaike info criterion	-7.101924
Sum squared resid	0.000702	Schwarz criterion	-6.807410
Log likelihood	91.22308	Hannan-Quinn criter.	-7.023789
F-statistic	20.94861	Durbin-Watson stat	1.624282
Prob(F-statistic)	0.000001		



Sumber : Hasil olahan program Eviews 8



## LAMPIRAN XVII : PERSAMAAN I MODEL OLS SETELAH DIFFERENCE VARIABEL TATO DAN DAR

Dependent Variable: ROA

Method: Least Squares

Date: 06/20/15 Time: 05:36

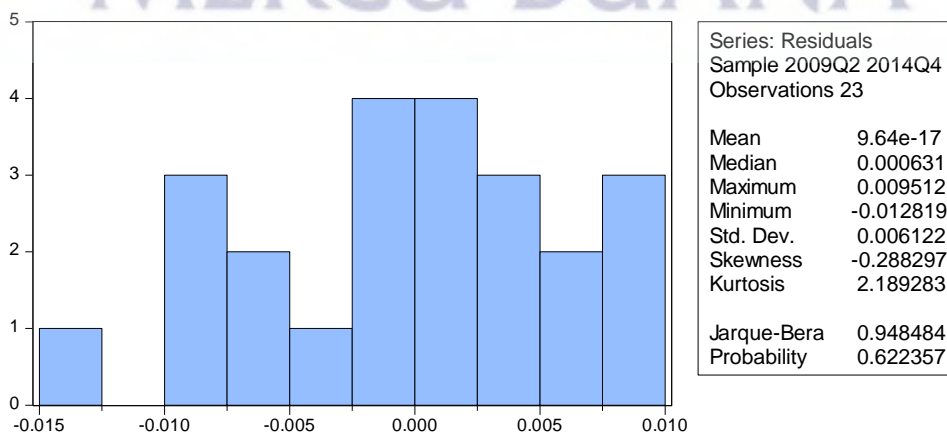
Sample (adjusted): 2009Q2 2014Q4

Included observations: 23 after adjustments

Variable	Coefficient	Std. Error	t-Statistic	Prob.
C	0.071796	0.189683	0.378508	0.7097
CURRENT_RATIO	0.002086	0.002805	0.743765	0.4672
TATO(-1)	0.031236	0.011474	2.722265	0.0145
DAR(-1)	-0.155118	0.109242	-1.419942	0.1737
SALES	0.064411	0.008805	7.315407	0.0000
SIZE	-0.065562	0.021208	-3.091398	0.0066

R-squared	0.827467	Mean dependent var	0.028449
Adjusted R-squared	0.776722	S.D. dependent var	0.014738
S.E. of regression	0.006964	Akaike info criterion	-6.876659
Sum squared resid	0.000824	Schwarz criterion	-6.580444
Log likelihood	85.08158	Hannan-Quinn criter.	-6.802162
F-statistic	16.30639	Durbin-Watson stat	2.020916
Prob(F-statistic)	0.000006		



Sumber : Hasil olahan program Eviews 8

## LAMPIRAN XVIII : UJI AUTOKORELASI

Breusch-Godfrey Serial Correlation LM Test:

F-statistic	0.514121	Prob. F(2,15)	0.6082
Obs*R-squared	1.475494	Prob. Chi-Square(2)	0.4782

Test Equation:

Dependent Variable: RESID

Method: Least Squares

Date: 06/30/15 Time: 16:21

Sample: 2009Q2 2014Q4

Included observations: 23

Presample missing value lagged residuals set to zero.

Variable	Coefficient	Std. Error	t-Statistic	Prob.
C	0.022170	0.197311	0.112359	0.9120
CURRENT_RATIO	0.000519	0.002934	0.176978	0.8619
TATO(-1)	0.001218	0.011879	0.102524	0.9197
DAR(-1)	0.012911	0.113272	0.113986	0.9108
SALES	0.001075	0.009141	0.117545	0.9080
SIZE	-0.003156	0.022141	-0.142529	0.8886
RESID(-1)	-0.038107	0.256934	-0.148315	0.8841
RESID(-2)	-0.266948	0.265913	-1.003892	0.3314
R-squared	0.064152	Mean dependent var		9.64E-17
Adjusted R-squared	-0.372577	S.D. dependent var		0.006122
S.E. of regression	0.007172	Akaike info criterion		-6.769049
Sum squared resid	0.000772	Schwarz criterion		-6.374094
Log likelihood	85.84406	Hannan-Quinn criter.		-6.669719
F-statistic	0.146892	Durbin-Watson stat		2.276125
Prob(F-statistic)	0.991986			

Sumber : Hasil olahan program Eviews 8

## LAMPIRAN XIX : UJI HETEROSKEDASTISITAS

### Persamaan I Tahun 2009 – 2014

Heteroskedasticity Test: White

F-statistic	1.754828	Prob. F(19,3)	0.3583
Obs*R-squared	21.10136	Prob. Chi-Square(19)	0.3312
Scaled explained SS	6.855004	Prob. Chi-Square(19)	0.9949

Test Equation:

Dependent Variable: RESID^2

Method: Least Squares

Date: 06/19/15 Time: 14:52

Sample: 2009Q2 2014Q4

Included observations: 23

Collinear test regressors dropped from specification

Variable	Coefficient	Std. Error	t-Statistic	Prob.
C	-0.049454	0.068564	-0.721283	0.5229
TATO(-1)^2	0.002124	0.001799	1.180879	0.3227
TATO(-1)*CURRENT_RATIO	0.000295	0.000284	1.038959	0.3752
TATO(-1)*DAR(-1)	0.017881	0.014899	1.200131	0.3162
TATO(-1)*SALES	-0.001294	0.001817	-0.712041	0.5278
TATO(-1)*SIZE	-0.001167	0.002162	-0.539740	0.6269
TATO(-1)	0.025504	0.018952	1.345758	0.2710
CURRENT_RATIO^2	6.82E-05	0.000135	0.505212	0.6482
CURRENT_RATIO*DAR(-1)	0.005364	0.005372	0.998410	0.3917
CURRENT_RATIO*SALES	0.000222	0.000348	0.637359	0.5692
CURRENT_RATIO*SIZE	-0.000496	0.000745	-0.665181	0.5535
CURRENT_RATIO	0.002212	0.004566	0.484403	0.6613
DAR(-1)^2	0.071379	0.050255	1.420313	0.2506
DAR(-1)*SALES	0.009906	0.009452	1.048053	0.3716
DAR(-1)*SIZE	-0.009932	0.011525	-0.861818	0.4522
DAR(-1)	-0.040792	0.215169	-0.189580	0.8617
SALES^2	-0.000661	0.000891	-0.741680	0.5121
SALES*SIZE	0.000594	0.001846	0.321933	0.7686
SALES	0.007013	0.010560	0.664159	0.5541
SIZE^2	-0.000143	0.000876	-0.163090	0.8808

R-squared	0.917450	Mean dependent var	3.58E-05
Adjusted R-squared	0.394635	S.D. dependent var	4.00E-05
S.E. of regression	3.11E-05	Akaike info criterion	-18.21655
Sum squared resid	2.90E-09	Schwarz criterion	-17.22916
Log likelihood	229.4903	Hannan-Quinn criter.	-17.96822
F-statistic	1.754828	Durbin-Watson stat	1.848369
Prob(F-statistic)	0.358349		

**LAMPIRAN XX : UJI MULTIKOLINEARITAS**  
**CORRELATION MATRIX**

	TATO(-1)	CURRENT_RA TIO	DAR(-1)	SALES	SIZE
TATO(-1)	1.000000	-0.040627	0.268168	-0.172256	0.141708
CURRENT_RA TIO	-0.040627	1.000000	-0.609586	-0.359471	-0.145673
DAR(-1)	0.268168	-0.609586	1.000000	0.214065	0.532827
SALES	-0.172256	-0.359471	0.214065	1.000000	0.586536
SIZE	0.141708	-0.145673	0.532827	0.586536	1.000000

Variance Inflation Factors

Date: 06/19/15 Time: 14:54

Sample: 2009Q1 2014Q4

Included observations: 23

Variable	Coefficient Variance	Uncentered VIF	Centered VIF
C	0.035980	17063.34	NA
TATO(-1)	0.000132	7.511509	1.181281
CURRENT_RATIO	7.87E-06	85.71066	2.525334
DAR(-1)	0.011934	58.73687	3.168849
SALES	7.75E-05	5163.253	2.444602
SIZE	0.000450	32633.76	3.068444

*Sumber : Hasil olahan program Eviews 8*