

# LAMPIRAN

Lampiran 1. Data Harian IHSG Januari 2009-Desember 2010.

Date	Open	High	Low	Close	Volume	Adj Close
1/5/2009	1377.45	1438.2	1377.45	1437.34	2.45E+08	1437.34
1/6/2009	1438.42	1462.63	1430.1	1435.54	4.48E+08	1435.54
1/7/2009	1440.25	1472.46	1414.15	1421.47	3.95E+08	1421.47
1/8/2009	1401.09	1410.93	1388.09	1402.66	1.31E+08	1402.66
1/9/2009	1400.7	1416.67	1395.32	1416.67	1.49E+09	1416.67
1/12/2009	1406.78	1411.23	1392.22	1406.55	1.05E+09	1406.55
1/13/2009	1395.45	1412.68	1392.36	1399.73	1.26E+08	1399.73
1/14/2009	1406.51	1416.06	1383.26	1386.91	2.99E+08	1386.91
1/15/2009	1358.7	1358.7	1329.3	1343.49	86340900	1343.49
1/16/2009	1349.82	1363.88	1345.4	1363.88	1.95E+08	1363.88
1/19/2009	1370.9	1375.37	1342.08	1350.69	1.38E+08	1350.69
1/20/2009	1335.72	1344.15	1320.69	1344.15	1.07E+08	1344.15
1/21/2009	1326.68	1334.91	1311.39	1321.45	95167800	1321.45
1/22/2009	1332.33	1336.78	1314.74	1327.32	66456600	1327.32
1/23/2009	1321.43	1321.43	1307.53	1315.58	5.45E+08	1315.58
1/27/2009	1320.14	1340.94	1320.14	1336.63	59264800	1336.63
1/28/2009	1339.94	1339.94	1320.79	1321.45	7.77E+08	1321.45
1/29/2009	1333.62	1336.63	1319.66	1324.65	86971300	1324.65
1/30/2009	1324.52	1332.67	1315.24	1332.67	55676700	1332.67
2/2/2009	1330.02	1330.02	1298.02	1310.64	5.41E+08	1310.64
2/3/2009	1311.2	1313.49	1300.07	1304.33	47637500	1304.33
2/4/2009	1311.88	1320.36	1307.64	1320.36	5.82E+08	1320.36
2/5/2009	1319.52	1331.51	1318.79	1328.07	1.35E+09	1328.07
2/6/2009	1337.58	1351.91	1336.52	1350.64	2.76E+08	1350.64
2/9/2009	1360.94	1360.94	1332.28	1342.23	1.79E+09	1342.23
2/10/2009	1342.27	1342.27	1326.66	1332.13	1.95E+08	1332.13
2/11/2009	1327.4	1327.4	1302.04	1324.82	3.07E+08	1324.82
2/12/2009	1322.1	1325.65	1315.39	1325.42	3.14E+08	1325.42
2/13/2009	1326.87	1342.76	1325.56	1338.74	1.73E+08	1338.74
2/16/2009	1338.81	1346.17	1336.52	1342	1.12E+08	1342
2/17/2009	1338.82	1338.82	1311.47	1318.04	1.54E+09	1318.04
2/18/2009	1312.48	1331.64	1304.35	1330.61	1.44E+08	1330.61
2/19/2009	1330.81	1330.81	1313.72	1323.7	2.36E+09	1323.7
2/20/2009	1320.62	1320.62	1291.41	1296.94	1.88E+08	1296.94
2/23/2009	1298.29	1312.44	1294.38	1312.44	1.18E+09	1312.44
2/24/2009	1305.7	1305.7	1286.73	1295.87	94302900	1295.87
2/25/2009	1301.08	1312.34	1290.17	1300.11	2.04E+09	1300.11
2/26/2009	1303.75	1303.75	1281.77	1290.32	1.96E+08	1290.32

Date	Open	High	Low	Close	Volume	Adj Close
2/27/2009	1292.28	1293.95	1281.07	1285.48	1.04E+08	1285.48
3/2/2009	1285.48	1285.48	1252.87	1256.11	1.07E+09	1256.11
3/3/2009	1256.11	1270.95	1244.87	1264.82	1.22E+08	1264.82
3/4/2009	1264.82	1289.8	1261.5	1289.38	1.32E+08	1289.38
3/5/2009	1289.38	1300.2	1282.22	1288.07	1.35E+08	1288.07
3/6/2009	1288.07	1290.62	1278.86	1286.69	58386900	1286.69
3/10/2009	1286.69	1300.54	1282.63	1300.21	7.3E+08	1300.21
3/11/2009	1300.21	1319.51	1300.21	1314.52	1.37E+08	1314.52
3/12/2009	1314.52	1318.15	1305.26	1310.41	72730700	1310.41
3/13/2009	1310.41	1333.22	1310.41	1327.44	1.2E+08	1327.44
3/16/2009	1327.44	1340.99	1322.48	1324.85	1.02E+09	1324.85
3/17/2009	1324.85	1326.11	1308.39	1312.09	1.04E+08	1312.09
3/18/2009	1312.09	1324.08	1312.09	1322.84	1.18E+09	1322.84
3/19/2009	1322.84	1347.12	1322.84	1341.6	1.28E+08	1341.6
3/20/2009	1341.6	1364.31	1341.15	1360.89	1.63E+08	1360.89
3/23/2009	1360.89	1407.59	1360.89	1406.65	2.66E+09	1406.65
3/24/2009	1406.65	1449.95	1406.65	1436.12	3.67E+08	1436.12
3/25/2009	1436.12	1448.47	1418.26	1419.97	2.81E+08	1419.97
3/26/2009	1419.97	1467.52	1419.97	1462.74	0	1462.74
3/27/2009	1419.97	1467.52	1419.97	1462.74	2.83E+08	1462.74
3/30/2009	1462.74	1463.59	1404.38	1419.09	1.79E+08	1419.09
3/31/2009	1419.09	1453.77	1417.34	1434.07	1.56E+08	1434.07
4/1/2009	1434.07	1464.39	1434.07	1461.75	2.51E+08	1461.75
4/2/2009	1461.75	1500	1461.75	1499.73	3.22E+08	1499.73
4/3/2009	1499.73	1511.33	1494.12	1500.36	3.03E+08	1500.36
4/6/2009	1500.36	1527.18	1500.36	1516.64	2.85E+08	1516.64
4/7/2009	1516.64	1516.64	1483.72	1490.86	2.93E+08	1490.86
4/8/2009	1490.86	1491.11	1460.04	1465.75	3.1E+08	1465.75
4/13/2009	1465.75	1540.52	1465.75	1540.4	4.72E+08	1540.4
4/14/2009	1540.4	1573.4	1536.67	1570.26	8.15E+08	1570.26
4/15/2009	1570.26	1603.31	1564.94	1593.66	9.59E+09	1593.66
4/16/2009	1593.66	1641.8	1593.66	1625.09	1.82E+09	1625.09
4/17/2009	1625.09	1659.34	1619.34	1634.79	1.06E+09	1634.79
4/20/2009	1634.79	1661.84	1618.88	1661.84	1.97E+09	1661.84
4/21/2009	1661.84	1661.84	1606.32	1628.85	2.21E+09	1628.85
4/22/2009	1628.85	1674.92	1610.46	1615.23	1.45E+09	1615.23
4/23/2009	1615.23	1615.25	1585.92	1592.7	7.34E+09	1592.7
4/24/2009	1592.7	1609.97	1576.29	1591.34	8.67E+09	1591.34
4/27/2009	1591.34	1598.96	1574.23	1576.08	5.93E+09	1576.08
4/28/2009	1576.08	1618.06	1576.08	1595.92	6.89E+09	1595.92

Date	Open	High	Low	Close	Volume	Adj Close
4/29/2009	1595.92	1648.63	1595.92	1644.19	6.96E+09	1644.19
4/30/2009	1644.19	1728.07	1644.19	1722.77	1.63E+09	1722.77
5/1/2009	1722.77	1738.71	1701.99	1729.58	1.13E+09	1729.58
5/4/2009	1729.58	1796.71	1729.58	1788.15	1.07E+09	1788.15
5/5/2009	1788.15	1823.38	1759.48	1772.07	1.13E+09	1772.07
5/6/2009	1772.07	1799.62	1761.11	1798.34	9.1E+08	1798.34
5/7/2009	1798.34	1840.48	1798.34	1828.85	1.69E+09	1828.85
5/8/2009	1828.85	1863.63	1821.14	1862.53	1.78E+09	1862.53
5/11/2009	1862.53	1891.77	1827.16	1830.74	2.26E+09	1830.74
5/12/2009	1830.74	1842.73	1796.94	1842.02	1.39E+09	1842.02
5/13/2009	1842.02	1871.82	1834.3	1851.33	2.88E+09	1851.33
5/14/2009	1851.33	1851.33	1776.94	1785	2.71E+09	1785
5/15/2009	1785	1820.85	1708.39	1750.91	1.82E+09	1750.91
5/18/2009	1750.49	1804.87	1712.64	1803.57	1.37E+09	1803.57
5/19/2009	1805.43	1888.22	1805.43	1886.02	1.58E+09	1886.02
5/20/2009	1886.22	1907.49	1872.26	1885.72	1.69E+09	1885.72
5/22/2009	1885.41	1889.88	1858.08	1881.71	1.33E+09	1881.71
5/25/2009	1881.4	1898.05	1878.65	1890.97	7.11E+09	1890.97
5/26/2009	1891.18	1905.91	1852.02	1857.59	9.1E+09	1857.59
5/27/2009	1858.41	1902.08	1858.41	1892.84	7.32E+09	1892.84
5/28/2009	1892.74	1904.62	1878.47	1902.88	6.2E+09	1902.88
5/29/2009	1903.19	1941.79	1903.19	1916.83	1.28E+09	1916.83
6/1/2009	1917.45	1998.58	1917.45	1998.58	1.01E+09	1998.58
6/2/2009	1999.2	2043.95	1991.96	1998.64	1.18E+09	1998.64
6/3/2009	1999.16	2027.69	1993.08	2010.91	1.06E+09	2010.91
6/4/2009	2010.81	2033.05	1989.79	2032.72	5.78E+09	2032.72
6/5/2009	2033.03	2078.93	2033.03	2078.93	7.55E+09	2078.93
6/8/2009	2079.77	2099.08	2052.03	2056.65	8.57E+09	2056.65
6/9/2009	2057.07	2096.93	2057.03	2093.29	6.59E+09	2093.29
6/10/2009	2094.14	2116.17	2094.14	2108.81	1.25E+09	2108.81
6/11/2009	2108.5	2112.84	2077.45	2089.58	1.48E+09	2089.58
6/12/2009	2089.79	2106.98	2073.34	2090.94	8.46E+09	2090.94
6/15/2009	2090.74	2100.77	2060.62	2069.88	6.05E+09	2069.88
6/16/2009	2069.46	2069.46	1995.57	2030.37	7.63E+09	2030.37
6/17/2009	2029.95	2034.32	2009.43	2024.96	5.82E+09	2024.96
6/18/2009	2024.65	2025.12	1940.32	1950.99	8.36E+09	1950.99
6/19/2009	1951.83	1993.24	1922.86	1990.47	7.39E+09	1990.47
6/22/2009	1990.68	2011.7	1965.39	1975.03	8.41E+09	1975.03
6/23/2009	1973.99	1973.99	1888.82	1914.39	6.86E+09	1914.39
6/24/2009	1913.96	1995.67	1913.96	1995.67	7.08E+09	1995.67
6/25/2009	1996.09	2045.67	1996.09	2044.17	7.59E+09	2044.17

Date	Open	High	Low	Close	Volume	Adj Close
6/26/2009	2044.38	2066.31	2026.74	2040.19	3.75E+09	2040.19
6/29/2009	2040.46	2049.85	2021.36	2033.72	2.74E+09	2033.72
6/30/2009	2034.98	2060.73	2020.69	2026.78	3.82E+09	2026.78
7/1/2009	2026.88	2059.89	2023.85	2059.88	3.86E+09	2059.88
7/2/2009	2060.09	2085.45	2056.75	2065.75	4.62E+09	2065.75
7/3/2009	2065.55	2078.05	2039.08	2075.3	0	2075.3
7/6/2009	2074.88	2074.88	2023.97	2035.01	2.9E+09	2035.01
7/7/2009	2034.89	2083.25	2034.89	2083.25	4.89E+09	2083.25
7/9/2009	2083.45	2116.86	2060.48	2083.97	7.11E+09	2083.97
7/10/2009	2084.81	2090.58	2058.32	2063.09	4.13E+09	2063.09
7/13/2009	2062.68	2063.95	1992.38	2020.14	3.75E+09	2020.14
7/14/2009	2020.64	2059.84	2020.64	2056.58	3.94E+09	2056.58
7/15/2009	2056.99	2123.46	2056.99	2123.28	4.93E+09	2123.28
7/16/2009	2123.79	2154.88	2112.93	2117.95	5.14E+09	2117.95
7/17/2009	2117.12	2126.51	2060.62	2106.35	4.35E+09	2106.35
7/21/2009	2107.07	2157.49	2107.07	2146.55	4.1E+09	2146.55
7/22/2009	2146.86	2156.42	2119.51	2125.61	6.89E+09	2125.61
7/23/2009	2125.72	2162.75	2125.72	2160.72	3.95E+09	2160.72
7/24/2009	2161.13	2199.22	2161.13	2185.65	3.96E+09	2185.65
7/27/2009	2186.07	2213.62	2186.07	2209.1	4.73E+09	2209.1
7/28/2009	2209.52	2240.64	2201.19	2237.1	6.9E+09	2237.1
7/29/2009	2236.9	2241.63	2190.41	2225.81	5.28E+09	2225.81
7/30/2009	2224.56	2298.77	2218.43	2298.14	9.14E+09	2298.14
7/31/2009	2298.65	2332.76	2298.65	2323.24	1.33E+09	2323.24
8/3/2009	2323.85	2350.68	2323.85	2338.8	1.03E+09	2338.8
8/4/2009	2339	2382.1	2339	2360.09	1.3E+09	2360.09
8/5/2009	2360.51	2362.77	2308.63	2317.06	1.14E+09	2317.06
8/6/2009	2317.37	2360.05	2309.99	2359.98	1.44E+09	2359.98
8/7/2009	2359.56	2366.96	2333.74	2349.13	1.12E+09	2349.13
8/10/2009	2349.75	2394.32	2349.75	2389.56	1.59E+09	2389.56
8/11/2009	2389.46	2404.74	2370.68	2399.28	1.45E+09	2399.28
8/12/2009	2399.17	2399.17	2326.81	2347.36	8.68E+09	2347.36
8/13/2009	2347.98	2408.88	2347.98	2396.49	1.1E+09	2396.49
8/14/2009	2397.62	2411.9	2370.09	2386.86	6.12E+09	2386.86
8/18/2009	2384.8	2384.8	2296.96	2336.99	8.14E+09	2336.99
8/19/2009	2337.19	2351.18	2271.21	2277.75	7.57E+09	2277.75
8/20/2009	2279.2	2330.7	2279.2	2328.64	5.91E+09	2328.64
8/21/2009	2328.43	2346.83	2313.77	2333.9	4.07E+09	2333.9
8/24/2009	2335.75	2379.91	2335.75	2375.87	4.72E+09	2375.87
8/25/2009	2375.67	2382.41	2351.86	2380.52	4.68E+09	2380.52
8/26/2009	2379.8	2387.38	2366.28	2380.09	6.74E+09	2380.09

Date	Open	High	Low	Close	Volume	Adj Close
8/27/2009	2379.67	2379.67	2338.69	2356.06	6.06E+09	2356.06
8/28/2009	2356.58	2378.11	2355.97	2377.25	4.44E+09	2377.25
8/31/2009	2377.45	2378.29	2333.31	2341.54	4.69E+09	2341.54
9/1/2009	2341.43	2355.81	2325.47	2326.91	3.87E+09	2326.91
9/2/2009	2325.88	2325.88	2272.76	2285.93	4.55E+09	2285.93
9/3/2009	2286.23	2329.28	2284.93	2322.25	5.79E+09	2322.25
9/4/2009	2322.56	2333.95	2316.05	2322.74	3.58E+09	2322.74
9/7/2009	2323.16	2342.16	2323.16	2340.39	3.79E+09	2340.39
9/8/2009	2340.7	2371.4	2333.87	2371.3	4.65E+09	2371.3
9/9/2009	2371.51	2389.79	2364.65	2383.34	3.52E+09	2383.34
9/10/2009	2383.75	2422.58	2383.75	2411.86	4.74E+09	2411.86
9/11/2009	2412.18	2425.39	2408.41	2415.95	4.84E+09	2415.95
9/14/2009	2415.11	2415.11	2377.03	2382.7	2.7E+09	2382.7
9/15/2009	2382.97	2420.82	2382.97	2420.11	4.34E+09	2420.11
9/16/2009	2420.31	2442.14	2420.31	2439.36	3.91E+09	2439.36
9/17/2009	2440.18	2474.79	2440.18	2456.99	5.24E+09	2456.99
9/24/2009	2457.29	2482.85	2454.86	2468.9	2.37E+09	2468.9
9/25/2009	2468.18	2468.18	2432.44	2444.58	1.84E+09	2444.58
9/28/2009	2444.38	2444.38	2394.77	2397.83	2.56E+09	2397.83
9/29/2009	2398.55	2444.47	2398.55	2443.83	3.03E+09	2443.83
9/30/2009	2444.25	2471.88	2435.02	2467.59	2.99E+09	2467.59
10/1/2009	2467.9	2484.68	2467.64	2477.97	2.76E+09	2477.97
10/2/2009	2477.56	2493.36	2433.07	2479.85	2.43E+09	2479.85
10/5/2009	2479.13	2486.08	2454.04	2480.41	6.08E+09	2480.41
10/6/2009	2480.83	2533.06	2480.83	2528.15	5.75E+09	2528.15
10/7/2009	2528.76	2559.67	2499.42	2513.41	6.18E+09	2513.41
10/8/2009	2513.82	2524.15	2472.63	2484.52	4.51E+09	2484.52
10/9/2009	2484.94	2489.92	2464.61	2474.4	2.77E+09	2474.4
10/12/2009	2474.82	2480.76	2446.47	2456.69	2.7E+09	2456.69
10/13/2009	2457.1	2486.13	2456.98	2471.99	2.92E+09	2471.99
10/14/2009	2472.3	2512.13	2472.3	2511.72	3.56E+09	2511.72
10/15/2009	2512.34	2537.64	2506.04	2515.38	4.02E+09	2515.38
10/16/2009	2515.59	2520.89	2501.79	2515.81	1.88E+09	2515.81
10/19/2009	2515.5	2521.56	2497.32	2520.92	1.79E+09	2520.92
10/20/2009	2521.34	2531.79	2493.78	2502.22	2.97E+09	2502.22
10/21/2009	2501.39	2501.39	2462.03	2476.8	3.44E+09	2476.8
10/22/2009	2476.38	2476.81	2421.51	2433.18	3.77E+09	2433.18
10/23/2009	2433.49	2469.14	2429.56	2467.95	4.46E+09	2467.95
10/26/2009	2468.48	2475.91	2456.42	2467.71	3.44E+09	2467.71
10/27/2009	2466.88	2466.88	2417.47	2425.2	4.32E+09	2425.2
10/28/2009	2424.41	2426.78	2336.8	2355.31	5.01E+09	2355.31

Date	Open	High	Low	Close	Volume	Adj Close
10/29/2009	2354.7	2354.7	2235.39	2344.03	6.92E+09	2344.03
10/30/2009	2345.06	2402.42	2345.06	2367.7	5.31E+09	2367.7
11/2/2009	2365.65	2373.2	2294.56	2371.64	4.42E+09	2371.64
11/3/2009	2371.95	2386.18	2328.45	2334.11	3.67E+09	2334.11
11/4/2009	2334.94	2371.9	2334.94	2371.86	4.08E+09	2371.86
11/5/2009	2371.65	2376.26	2355.44	2367.21	3E+09	2367.21
11/6/2009	2367.62	2403.27	2367.62	2395.11	2.89E+09	2395.11
11/9/2009	2395.41	2406.92	2380.49	2406.43	2.28E+09	2406.43
11/10/2009	2406.74	2432.33	2372.04	2381.96	3.6E+09	2381.96
11/11/2009	2382.58	2414.91	2380.27	2403.88	5.6E+09	2403.88
11/12/2009	2405.13	2434.01	2405.13	2420.28	5.6E+09	2420.28
11/13/2009	2420.07	2431.23	2408.62	2426.8	2.4E+09	2426.8
11/16/2009	2427.31	2471.71	2427.31	2468.68	5.65E+09	2468.68
11/17/2009	2468.99	2487.01	2461.28	2473.79	6.29E+09	2473.79
11/18/2009	2473.69	2487.61	2451.71	2484.23	7.3E+09	2484.23
11/19/2009	2483.92	2491.48	2458.28	2468.79	8.54E+09	2468.79
11/20/2009	2468.26	2490.29	2458.63	2487.36	7.12E+09	2487.36
11/23/2009	2487.78	2494.82	2467.5	2481.42	6.81E+09	2481.42
11/24/2009	2481.52	2491.86	2455.32	2471.88	4.82E+09	2471.88
11/25/2009	2471.09	2482.29	2458.74	2461.53	4.39E+09	2461.53
11/26/2009	2459.94	2462.32	2386.73	2393.52	5.94E+09	2393.52
11/30/2009	2393.42	2430.25	2370.53	2415.84	4.46E+09	2415.84
12/1/2009	2416.04	2452.5	2413	2452.5	3.86E+09	2452.5
12/2/2009	2452.92	2481.88	2452.92	2471.56	4.69E+09	2471.56
12/3/2009	2471.15	2502.55	2471.15	2500.04	5.13E+09	2500.04
12/4/2009	2499.62	2512.66	2484.9	2511.54	3.6E+09	2511.54
12/7/2009	2511.96	2516.18	2478.58	2483.76	2.8E+09	2483.76
12/8/2009	2484.28	2497.51	2470.24	2483.89	2.94E+09	2483.89
12/9/2009	2483.79	2485.84	2462.88	2481.3	3.11E+09	2481.3
12/10/2009	2481.5	2492.31	2476.57	2486.44	2.81E+09	2486.44
12/11/2009	2485.82	2519.1	2485.82	2519.1	3.07E+09	2519.1
12/14/2009	2519.3	2519.3	2492.45	2506.39	3.33E+09	2506.39
12/15/2009	2505.59	2510.29	2481.7	2494.74	3.57E+09	2494.74
12/16/2009	2495.05	2523.19	2482.44	2522.54	3.96E+09	2522.54
12/17/2009	2522.65	2542.5	2505.97	2509.58	3.39E+09	2509.58
12/21/2009	2508.96	2509.38	2415.35	2431.39	2.85E+09	2431.39
12/22/2009	2432.22	2468.79	2432.22	2467.64	2.34E+09	2467.64
12/23/2009	2467.84	2476.57	2456.21	2474.88	1.93E+09	2474.88
12/24/2009	2474.88	2474.88	2474.88	2474.88	0	2474.88
12/28/2009	2475.09	2512.22	2475.09	2509.69	2.37E+09	2509.69
12/29/2009	2511.26	2520.86	2504.87	2518.99	2.21E+09	2518.99

Date	Open	High	Low	Close	Volume	Adj Close
12/30/2009	2520.3	2534.36	2519.01	2534.36	1.99E+09	2534.36
1/4/2010	2533.95	2576.06	2532.9	2575.41	1.83E+09	2575.41
1/5/2010	2575.62	2606.07	2575.62	2605.28	5.7E+09	2605.28
1/6/2010	2605.48	2622.12	2587.71	2603.3	5.16E+09	2603.3
1/7/2010	2603.5	2611.6	2570.27	2586.9	4.55E+09	2586.9
1/8/2010	2586.79	2614.54	2583.85	2614.37	7.37E+09	2614.37
1/11/2010	2615.61	2649.2	2615.61	2632.2	5.29E+09	2632.2
1/12/2010	2632.31	2659.98	2623.77	2659.55	5.75E+09	2659.55
1/13/2010	2657.9	2657.9	2623.46	2632.87	4.27E+09	2632.87
1/14/2010	2633.58	2661.93	2633.58	2645.18	5.31E+09	2645.18
1/15/2010	2646.75	2655.81	2638.36	2647.09	4.76E+09	2647.09
1/18/2010	2645.44	2648.92	2629.91	2642.55	3.09E+09	2642.55
1/19/2010	2642.35	2666.57	2640.18	2666.07	3.28E+09	2666.07
1/20/2010	2666.58	2689.77	2655	2667.27	3.7E+09	2667.27
1/21/2010	2664.66	2664.66	2621.36	2638.38	3.24E+09	2638.38
1/22/2010	2636.96	2636.96	2580.17	2610.34	3.67E+09	2610.34
1/25/2010	2609.73	2609.73	2575.96	2597.86	3.37E+09	2597.86
1/26/2010	2597.35	2608.74	2568.95	2578.42	4.21E+09	2578.42
1/27/2010	2577.91	2594.25	2554.88	2564.55	2.6E+09	2564.55
1/28/2010	2565.38	2619.98	2565.38	2619.56	3.36E+09	2619.56
1/29/2010	2619.26	2619.26	2569.27	2610.8	2.17E+09	2610.8
2/1/2010	2610.59	2610.59	2571.76	2587.55	3.23E+09	2587.55
2/2/2010	2588.26	2613.67	2574.11	2580.25	3.06E+09	2580.25
2/3/2010	2580.66	2606.28	2580.66	2604.55	3.83E+09	2604.55
2/4/2010	2604.75	2610.37	2589.05	2593.22	3.8E+09	2593.22
2/5/2010	2592.41	2592.41	2506.89	2518.98	3.48E+09	2518.98
2/8/2010	2518.61	2518.61	2431.84	2475.57	3.69E+09	2475.57
2/9/2010	2474.75	2490.11	2439.91	2489.49	3.27E+09	2489.49
2/10/2010	2490.29	2511.74	2474.4	2483.44	2.65E+09	2483.44
2/11/2010	2483.64	2508.26	2468.85	2507.75	4.09E+09	2507.75
2/12/2010	2508.15	2536.57	2501.99	2534.14	3.53E+09	2534.14
2/15/2010	2533.73	2533.73	2510.96	2517.46	1.67E+09	2517.46
2/16/2010	2517.66	2558.66	2516.34	2558.5	2.23E+09	2558.5
2/17/2010	2558.61	2581.6	2558.61	2581.34	3.57E+09	2581.34
2/18/2010	2581.44	2581.44	2550.53	2560.03	2.63E+09	2560.03
2/19/2010	2559.93	2559.93	2527.75	2554.38	2.19E+09	2554.38
2/22/2010	2554.78	2574.97	2553.81	2564.26	1.9E+09	2564.26
2/23/2010	2564.16	2583.7	2538.03	2583.65	3.27E+09	2583.65
2/24/2010	2582.42	2582.42	2555.47	2579.42	4.01E+09	2579.42
2/25/2010	2579.31	2583.16	2536.09	2549.03	2.37E+09	2549.03
3/1/2010	2548.83	2565.44	2545.89	2554.67	1.9E+09	2554.67



Date	Open	High	Low	Close	Volume	Adj Close
3/2/2010	2554.47	2577.09	2554.47	2576.59	2.54E+09	2576.59
3/3/2010	2577	2585.83	2552.85	2567.09	3.42E+09	2567.09
3/4/2010	2566.99	2579.53	2557.37	2565.65	2.5E+09	2565.65
3/5/2010	2566.05	2583.09	2566.05	2578.77	2.54E+09	2578.77
3/8/2010	2578.97	2627.7	2578.97	2626.45	2.98E+09	2626.45
3/9/2010	2626.25	2657.38	2624.11	2657.17	3.04E+09	2657.17
3/10/2010	2656.86	2676.27	2652.85	2670.22	3.02E+09	2670.22
3/11/2010	2670.12	2687.12	2661.93	2676.52	4.08E+09	2676.52
3/12/2010	2676.11	2686.24	2661.06	2666.51	5.27E+09	2666.51
3/15/2010	2666.41	2683.11	2658.55	2669.61	2.95E+09	2669.61
3/17/2010	2669.41	2756.26	2669.41	2756.26	6.57E+09	2756.26
3/18/2010	2756.46	2779.36	2718.31	2737.24	6.03E+09	2737.24
3/19/2010	2738.8	2758.13	2725.65	2742.97	3.88E+09	2742.97
3/22/2010	2742.67	2742.67	2698.26	2702.4	3.43E+09	2702.4
3/23/2010	2702.6	2746.14	2702.6	2720.86	2.75E+09	2720.86
3/24/2010	2721.16	2774.85	2721.16	2774.85	3.32E+09	2774.85
3/25/2010	2773.3	2814.86	2760.2	2799.15	4.2E+09	2799.15
3/26/2010	2799.25	2813.08	2792.36	2813.08	4.01E+09	2813.08
3/29/2010	2813.49	2813.8	2780.43	2794.77	4.62E+09	2794.77
3/30/2010	2795.18	2818.94	2787.5	2798.27	4.14E+09	2798.27
3/31/2010	2798.68	2809.47	2758.26	2777.3	4.17E+09	2777.3
4/1/2010	2777.7	2834.24	2777.7	2830	4.21E+09	2830
4/5/2010	2831.03	2890.18	2831.03	2887.25	4.42E+09	2887.25
4/6/2010	2888.81	2911.46	2871.75	2880.97	8.45E+09	2880.97
4/7/2010	2881.37	2916.11	2881.37	2898.58	6.58E+09	2898.58
4/8/2010	2898.18	2898.18	2837.4	2850.83	5.13E+09	2850.83
4/9/2010	2850.63	2870.97	2833.24	2845.01	4.24E+09	2845.01
4/12/2010	2845.61	2882.71	2845.61	2881.33	5.05E+09	2881.33
4/13/2010	2881.03	2884.95	2856.25	2884.7	4.99E+09	2884.7
4/14/2010	2884.9	2897.33	2875.25	2885.01	5.04E+09	2885.01
4/15/2010	2885.12	2913.72	2885.12	2900.53	5.72E+09	2900.53
4/16/2010	2900.83	2903.28	2860.93	2878.67	3.63E+09	2878.67
4/19/2010	2877.97	2877.97	2811.79	2840.43	3.76E+09	2840.43
4/20/2010	2840.63	2892.62	2840.63	2891.27	4.07E+09	2891.27
4/21/2010	2891.47	2916.55	2891.47	2912.83	6.54E+09	2912.83
4/22/2010	2912.73	2927.39	2883.01	2926.53	5.01E+09	2926.53
4/23/2010	2926.13	2926.39	2907.03	2924.73	3.85E+09	2924.73
4/26/2010	2924.93	2954.83	2924.93	2944.71	4.08E+09	2944.71
4/27/2010	2943.68	2944.44	2930.42	2939.3	4.2E+09	2939.3
4/28/2010	2939	2939	2875.67	2903.32	5.16E+09	2903.32
4/29/2010	2903.52	2927.96	2903.52	2926.86	6.14E+09	2926.86

Date	Open	High	Low	Close	Volume	Adj Close
4/30/2010	2927.26	2972.92	2927.26	2971.25	5.24E+09	2971.25
5/3/2010	2971.75	2982.36	2950.43	2960.9	4.09E+09	2960.9
5/4/2010	2961.29	2996.42	2946.42	2959.01	3.91E+09	2959.01
5/5/2010	2958.52	2958.52	2834.96	2846.24	6.43E+09	2846.24
5/6/2010	2846.04	2846.04	2748.68	2810.62	4.97E+09	2810.62
5/7/2010	2808.74	2808.74	2705.21	2739.33	3.57E+09	2739.33
5/10/2010	2739.93	2860.05	2739.93	2850.43	5.73E+09	2850.43
5/11/2010	2850.82	2865.48	2808.57	2812.89	5.09E+09	2812.89
5/12/2010	2812.99	2849.08	2812.99	2847.62	2.77E+09	2847.62
5/14/2010	2847.13	2869.49	2843.85	2858.39	2.8E+09	2858.39
5/17/2010	2857.99	2857.99	2780.39	2819.47	2.6E+09	2819.47
5/18/2010	2820.48	2837.56	2818.84	2834.19	3.2E+09	2834.19
5/19/2010	2833.69	2833.69	2721.73	2729.48	4.79E+09	2729.48
5/20/2010	2730.29	2763.88	2660.12	2694.25	4.92E+09	2694.25
5/21/2010	2692.67	2692.67	2584.97	2623.22	4.17E+09	2623.22
5/24/2010	2623.72	2672.86	2600.85	2609.61	5.42E+09	2609.61
5/25/2010	2609.02	2609.02	2502.05	2514.12	7.16E+09	2514.12
5/26/2010	2514.91	2701.99	2514.91	2696.78	9.66E+09	2696.78
5/27/2010	2696.28	2732.06	2618.28	2713.92	1E+09	2713.92
5/31/2010	2714.32	2799.45	2714.32	2796.96	5.66E+09	2796.96
6/1/2010	2796.66	2796.66	2724.11	2724.61	5.5E+09	2724.61
6/2/2010	2725.01	2771.28	2721.19	2733.68	5.92E+09	2733.68
6/3/2010	2734.17	2811.83	2734.17	2810.98	6.34E+09	2810.98
6/4/2010	2810.88	2823.86	2791.46	2823.25	4.97E+09	2823.25
6/7/2010	2820.88	2820.88	2698.28	2750.23	3.97E+09	2750.23
6/8/2010	2750.35	2781.35	2750.35	2779.98	4.31E+09	2779.98
6/9/2010	2779.78	2794.18	2765.35	2785.79	4.1E+09	2785.79
6/10/2010	2786.19	2792.52	2758.16	2770.79	3.46E+09	2770.79
6/11/2010	2771.48	2817.41	2771.48	2801.9	3.08E+09	2801.9
6/14/2010	2802.1	2826.96	2802.1	2826.84	2.5E+09	2826.84
6/15/2010	2827.03	2850.03	2824.38	2830.17	3.72E+09	2830.17
6/16/2010	2830.67	2877.85	2830.67	2858.66	3.78E+09	2858.66
6/17/2010	2856.37	2897.61	2856.37	2891.1	4.96E+09	2891.1
6/18/2010	2891.3	2932.06	2891.3	2929.59	6.32E+09	2929.59
6/21/2010	2929.99	2981.28	2926.08	2941.9	5.48E+09	2941.9
6/22/2010	2940.9	2956.81	2921.3	2934.59	3.45E+09	2934.59
6/23/2010	2933.9	2933.9	2899.27	2924.79	4.59E+09	2924.79
6/24/2010	2924.89	2946.54	2908.35	2914.09	4.06E+09	2914.09
6/25/2010	2913.8	2949.42	2904.39	2947.02	2.52E+09	2947.02
6/28/2010	2947.22	2975.9	2945.22	2955.73	2.97E+09	2955.73
6/29/2010	2955.83	2960.81	2872.42	2893.37	2.74E+09	2893.37

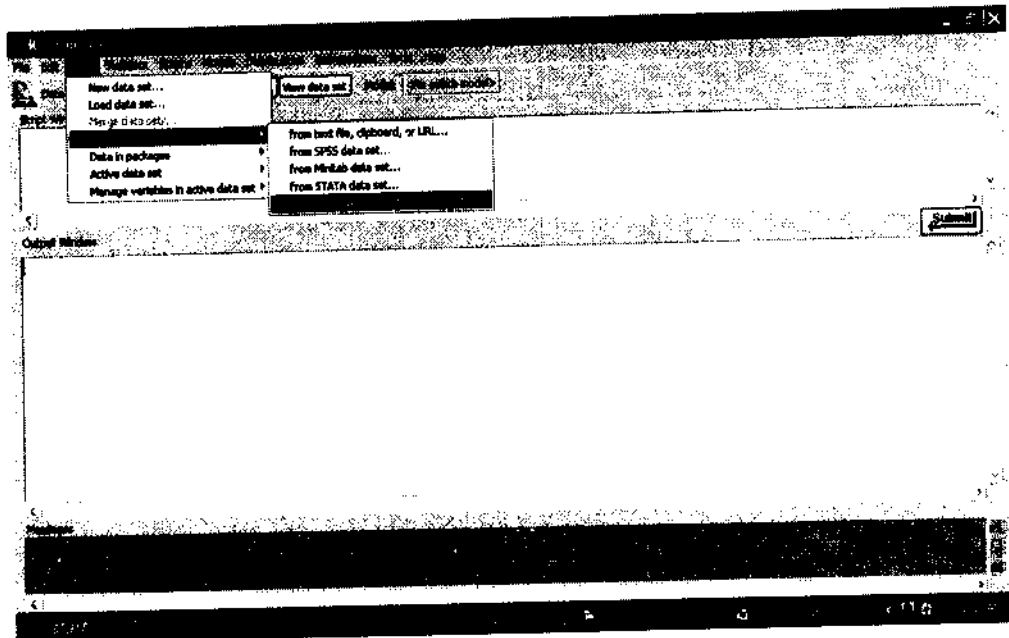
Date	Open	High	Low	Close	Volume	Adj Close
6/30/2010	2892.58	2918.06	2844.45	2913.68	2.49E+09	2913.68
7/1/2010	2912.88	2912.88	2860.91	2874.25	3.86E+09	2874.25
7/2/2010	2874.84	2891.19	2861.23	2871.55	2.45E+09	2871.55
7/5/2010	2871.95	2885.35	2869.07	2877.3	2.26E+09	2877.3
7/6/2010	2877.4	2912.08	2864.75	2910.65	2.46E+09	2910.65
7/7/2010	2910.53	2913.84	2890.29	2902.04	2.05E+09	2902.04
7/8/2010	2902.63	2936.26	2902.63	2915.91	4.2E+09	2915.91
7/9/2010	2916.2	2943.96	2909.67	2943.9	4.29E+09	2943.9
7/12/2010	2942.13	2972.56	2940.6	2958.79	3.46E+09	2958.79
7/13/2010	2957.79	2978.51	2946.41	2961.51	2.77E+09	2961.51
7/14/2010	2961.71	2994.59	2961.71	2981.06	3.95E+09	2981.06
7/15/2010	2980.06	2987.04	2956.89	2980.6	4.53E+09	2980.6
7/16/2010	2980.48	2992.45	2972.27	2992.45	4.34E+09	2992.45
7/19/2010	2992.16	2992.16	2948.03	2975.57	2.91E+09	2975.57
7/20/2010	2975.87	2995.44	2970.8	2995.44	4.28E+09	2995.44
7/21/2010	2995.74	3014.48	2994.21	3013.4	5.06E+09	3013.4
7/22/2010	3013.7	3019.01	2997.3	3009.92	4.22E+09	3009.92
7/23/2010	3010.31	3051.36	3010.31	3042.02	5.12E+09	3042.02
7/26/2010	3042.12	3062.95	3014.55	3023.7	4.18E+09	3023.7
7/27/2010	3023.99	3061.63	3023.99	3041.68	3.81E+09	3041.68
7/28/2010	3041.58	3064.79	3041.58	3057.48	3.99E+09	3057.48
7/29/2010	3057.97	3097.19	3056.67	3096.82	4.57E+09	3096.82
7/30/2010	3096.72	3104.08	3054.1	3069.28	3.36E+09	3069.28
8/2/2010	3070.28	3083.86	3048.59	3058.98	2.96E+09	3058.98
8/3/2010	3059.37	3084.17	2965.56	2973.66	4.32E+09	2973.66
8/4/2010	2973.85	3001.12	2959.75	2983.25	3.03E+09	2983.25
8/5/2010	2983.84	3046.87	2983.84	3044.94	3.59E+09	3044.94
8/6/2010	3045.43	3062.68	3031.43	3060.59	2.78E+09	3060.59
8/9/2010	3057.55	3082.78	3056.17	3082.6	2.45E+09	3082.6
8/10/2010	3082.99	3083.29	3047.22	3057.16	2.39E+09	3057.16
8/11/2010	3054.64	3061.88	3022.5	3035.32	2.88E+09	3035.32
8/12/2010	3034.24	3034.24	2993.77	3025.64	2.59E+09	3025.64
8/13/2010	3025.74	3053.57	3025.74	3053.01	2.25E+09	3053.01
8/16/2010	3052.91	3059.04	3032.43	3052.6	2.6E+09	3052.6
8/18/2010	3053.36	3072.83	3045.22	3072.09	3.51E+09	3072.09
8/19/2010	3072.48	3118.37	3072.48	3105.35	5.73E+09	3105.35
8/20/2010	3103.37	3118.65	3084.99	3117.72	4.46E+09	3117.72
8/23/2010	3117.43	3129.66	3107.76	3128.73	5.52E+09	3128.73
8/24/2010	3128.44	3145.11	3099.92	3114.94	4.9E+09	3114.94
8/25/2010	3114.74	3140.16	3102.51	3138.91	6.59E+09	3138.91
8/26/2010	3138.52	3150.16	3128.87	3145.14	6.94E+09	3145.14

Date	Open	High	Low	Close	Volume	Adj Close
8/27/2010	3145.04	3145.04	3089.69	3104.73	4.82E+09	3104.73
8/30/2010	3105.22	3138.49	3089.64	3099.56	3.82E+09	3099.56
8/31/2010	3098.77	3099.75	3058.05	3081.88	3.6E+09	3081.88
9/1/2010	3081.49	3135.54	3081.49	3135.32	3.83E+09	3135.32
9/2/2010	3135.71	3159.72	3105.81	3122.15	4.01E+09	3122.15
9/3/2010	3122.25	3164.36	3122.25	3164.28	46251000	3164.28
9/6/2010	3164.47	3217.37	3164.47	3217.15	2.84E+09	3217.15
9/7/2010	3217.54	3239.45	3214.2	3230.89	3.68E+09	3230.89
9/15/2010	3232.08	3360.05	3232.08	3357.03	4.68E+09	3357.03
9/16/2010	3357.13	3358.12	3317.79	3341.63	5.09E+09	3341.63
9/17/2010	3341.44	3390.56	3341.44	3384.65	0	3384.65
9/20/2010	3384.56	3392.06	3344.9	3370.98	1.03E+09	3370.98
9/21/2010	3371.47	3405.85	3342.2	3365.04	1.01E+09	3365.04
9/22/2010	3365.13	3380.2	3332.27	3343.34	1.12E+09	3343.34
9/23/2010	3343.83	3351.39	3313.31	3337.2	7.51E+09	3337.2
9/24/2010	3338.71	3400.56	3331.86	3397.63	4.98E+09	3397.63
9/27/2010	3397.82	3472.03	3397.82	3468.04	6.05E+09	3468.04
9/28/2010	3468.23	3524.32	3455.5	3472.71	6.18E+09	3472.71
9/29/2010	3473.29	3513.36	3473.29	3495.46	6.12E+09	3495.46
9/30/2010	3495.76	3514.77	3487.71	3501.3	5.58E+09	3501.3
10/1/2010	3501.2	3550.03	3501.2	3547.11	0	3547.11
10/4/2010	3547.31	3594.37	3547.31	3569.5	5.64E+09	3569.5
10/5/2010	3569.59	3592.09	3553.09	3591.7	6.84E+09	3591.7
10/6/2010	3592.08	3630.39	3582.25	3603.4	8.12E+09	3603.4
10/7/2010	3603.5	3605.53	3540.61	3586.19	6.48E+09	3586.19
10/8/2010	3585.9	3585.9	3532.01	3546.95	0	3546.95
10/11/2010	3547.72	3575.24	3536.51	3548.75	5.45E+09	3548.75
10/12/2010	3548.94	3565.41	3535.78	3547.25	6.45E+09	3547.25
10/13/2010	3549.47	3611.98	3547.98	3611.98	8.52E+09	3611.98
10/14/2010	3612.17	3645.61	3603	3618.48	6.64E+09	3618.48
10/15/2010	3619.47	3619.47	3584.79	3597.03	5.01E+09	3597.03
10/18/2010	3596.84	3596.84	3557.27	3566.92	4.98E+09	3566.92
10/19/2010	3567.41	3599.82	3567.41	3592.79	6.4E+09	3592.79
10/20/2010	3592.5	3592.5	3537.09	3578.95	8.22E+09	3578.95
10/21/2010	3579.15	3610.56	3579.15	3588.01	6.8E+09	3588.01
10/22/2010	3588.75	3605.21	3582.81	3597.75	0	3597.75
10/25/2010	3598.21	3644.72	3598.21	3643.49	5.13E+09	3643.49
10/26/2010	3643.11	3661.2	3638.06	3654.1	5.37E+09	3654.1
10/27/2010	3652.19	3667.01	3602.12	3624.47	5.12E+09	3624.47
10/28/2010	3623.89	3643.52	3614.63	3638.83	4.32E+09	3638.83
10/29/2010	3639.21	3647.56	3615.22	3635.32	0	3635.32

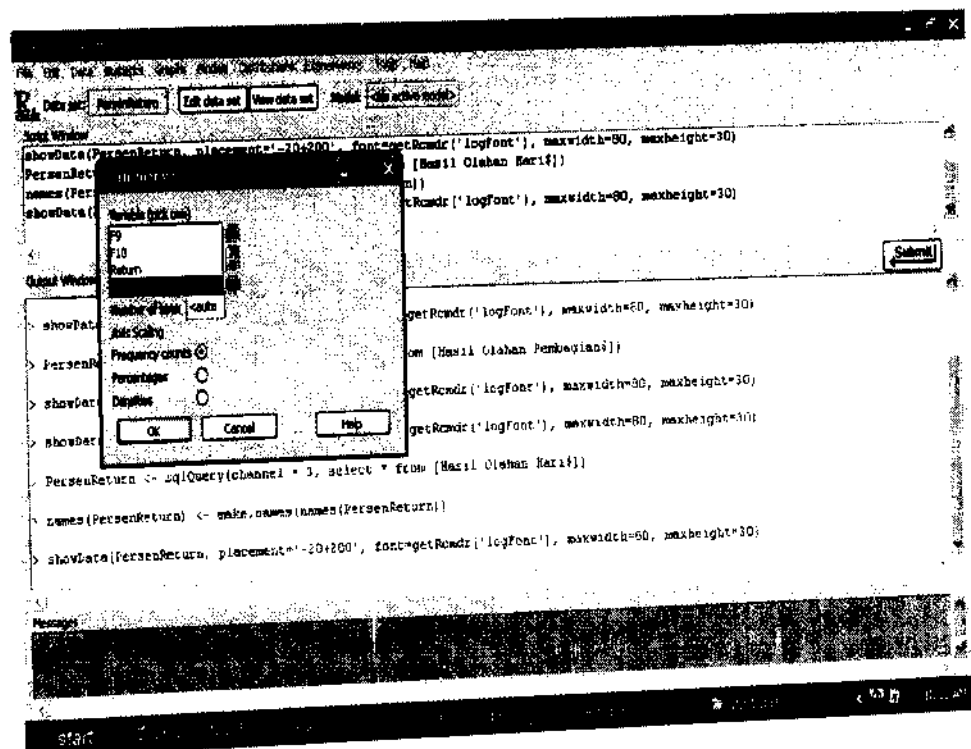
Date	Open	High	Low	Close	Volume	Adj Close
11/1/2010	3635.52	3663.79	3621.56	3645.15	3.82E+09	3645.15
11/2/2010	3644.18	3648.26	3616.37	3625.49	4.94E+09	3625.49
11/3/2010	3625.68	3641.73	3590.37	3605.67	4.73E+09	3605.67
11/4/2010	3605.86	3633.69	3604.72	3629.05	4.17E+09	3629.05
11/5/2010	3629.72	3665.85	3629.72	3655.3	0	3655.3
11/8/2010	3655.4	3700.54	3654.48	3699.26	4.13E+09	3699.26
11/9/2010	3699.15	3742.77	3689.75	3737.48	5.96E+09	3737.48
11/10/2010	3738.06	3759.48	3731.19	3756.97	7.13E+09	3756.97
11/11/2010	3757.35	3777.92	3721.89	3744.62	7.83E+09	3744.62
11/12/2010	3744.52	3744.53	3633.42	3665.85	5.87E+09	3665.85
11/15/2010	3665.09	3674.57	3633.15	3656.46	5.71E+09	3656.46
11/16/2010	3656.94	3682.8	3637.9	3674.03	6.79E+09	3674.03
11/18/2010	3673.55	3682.37	3641.17	3677.9	1.38E+09	3677.9
11/19/2010	3678.47	3725.05	3678.47	3725.05	0	3725.05
11/22/2010	3725.33	3742.94	3707.9	3741.23	5.46E+09	3741.23
11/23/2010	3741.04	3741.04	3658.58	3678.19	6.74E+09	3678.19
11/24/2010	3677.62	3684.15	3619.88	3658.78	5.43E+09	3658.78
11/25/2010	3659.16	3710.94	3659.16	3702.01	8.58E+09	3702.01
11/26/2010	3701.92	3710.46	3632.09	3642.5	0	3642.5
11/29/2010	3642.88	3642.88	3573.22	3630.64	5.04E+09	3630.64
11/30/2010	3631.54	3633.99	3529.85	3531.21	7.97E+09	3531.21
12/1/2010	3530.93	3619.09	3530.93	3619.09	6.65E+09	3619.09
12/2/2010	3619.85	3706.4	3619.85	3694.58	6.52E+09	3694.58
12/3/2010	3694.67	3728.09	3679.83	3696.26	0	3696.26
12/6/2010	3696.73	3728.97	3696.73	3722.35	3.98E+09	3722.35
12/8/2010	3722.91	3771.79	3722.91	3769.99	4.31E+09	3769.99
12/9/2010	3771.49	3788.56	3764.29	3786.1	4.78E+09	3786.1
12/10/2010	3784.66	3784.66	3728.98	3747.71	0	3747.71
12/13/2010	3747.81	3751.93	3681.32	3692.23	3.8E+09	3692.23
12/14/2010	3692.42	3712.33	3676.73	3689.67	3.58E+09	3689.67
12/15/2010	3691.11	3691.11	3613.67	3658.31	4.15E+09	3658.31
12/16/2010	3657.47	3657.47	3554.85	3571.74	4.01E+09	3571.74
12/17/2010	3571.46	3601.85	3536.66	3581.56	0	3581.56
12/20/2010	3589.15	3591.29	3537.67	3568.81	3.58E+09	3568.81
12/21/2010	3569.46	3642.1	3569.46	3637.45	2.55E+09	3637.45
12/22/2010	3637.69	3649.98	3610.57	3620.68	2.24E+09	3620.68
12/23/2010	3621.63	3626.12	3587.99	3611.53	1.98E+09	3611.53
12/27/2010	3612	3626.25	3601.48	3625.27	1.87E+09	3625.27
12/28/2010	3625.73	3672.18	3623.83	3659.99	2.01E+09	3659.99
12/29/2010	3660.09	3704	3660.09	3699.22	1.89E+09	3699.22
12/30/2010	3698.94	3718.98	3689.03	3703.51	2.05E+09	3703.51

## Lampiran 2. Pengolahan Data dengan Software R

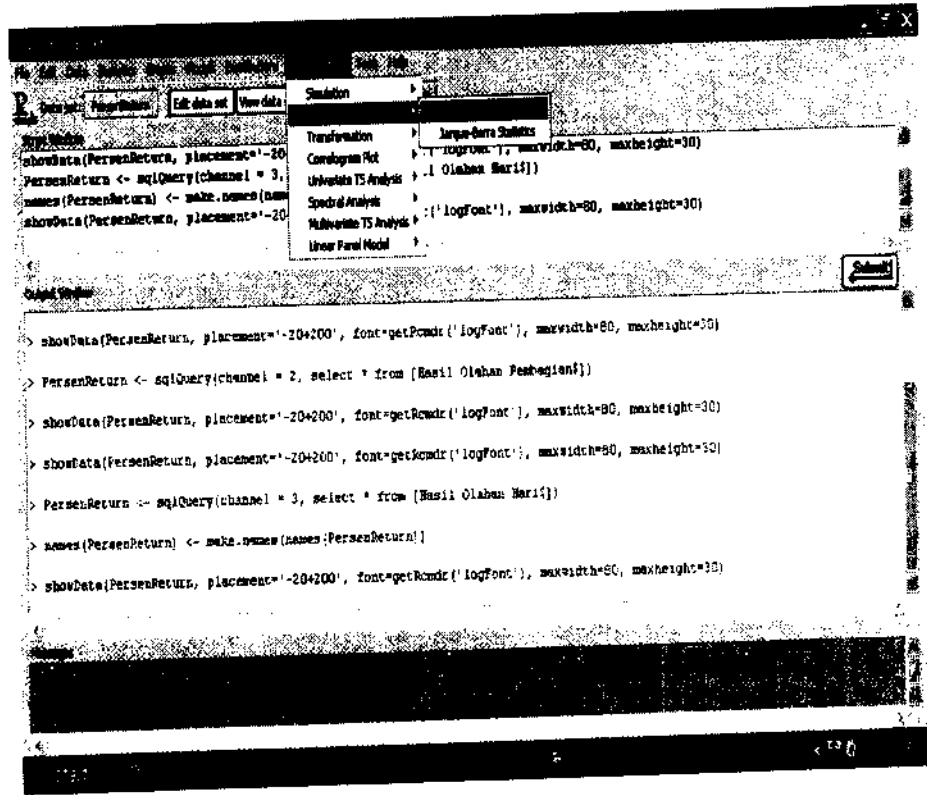
### 1. Mengimport data dari MS Excel



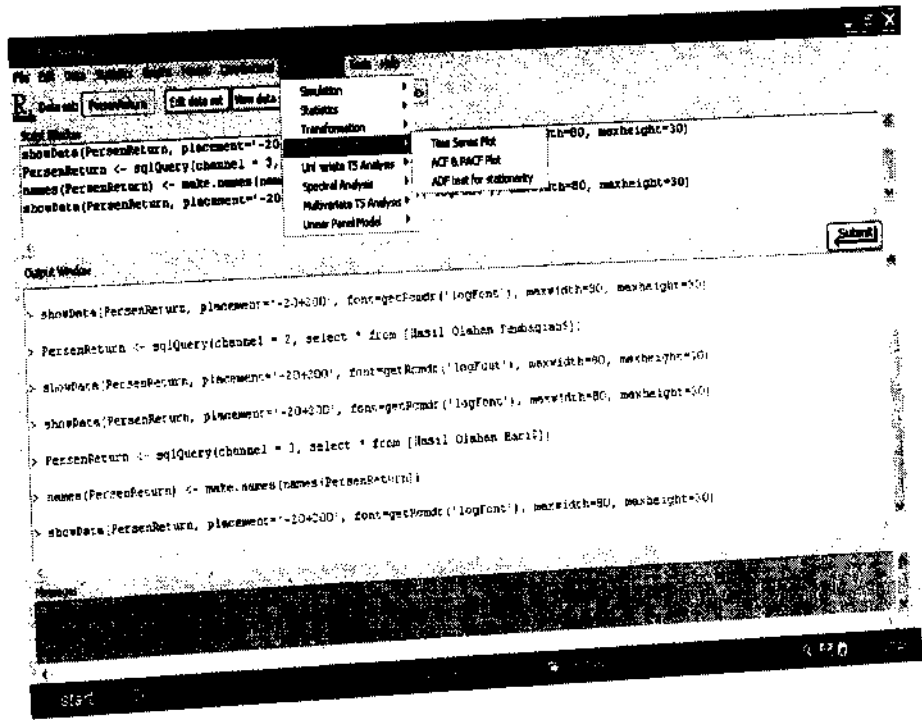
### 2. Pembuatan Histogram



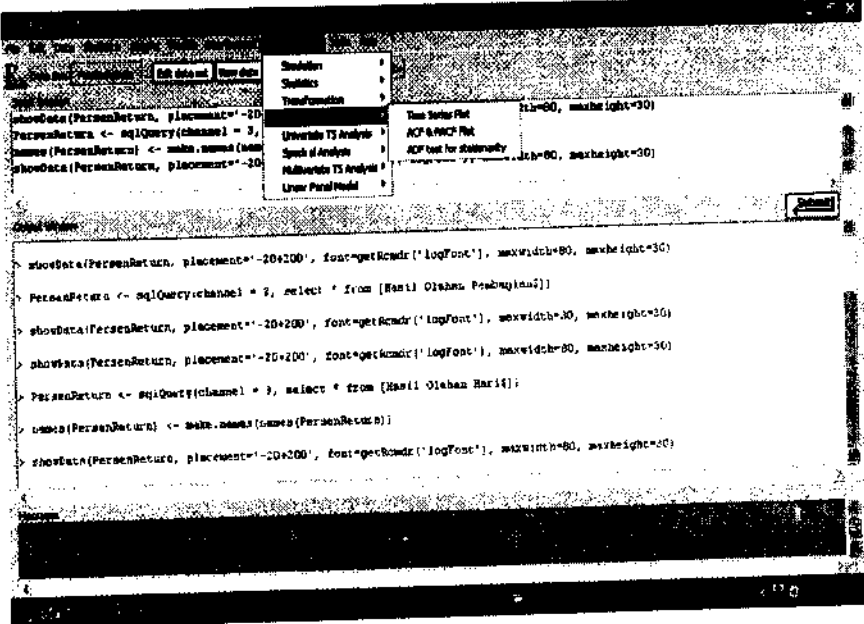
### 3. Perhitungan Jarque Bera untuk Uji Normalitas



### 4. Plot data dan collerogram ACF & PACF



## 5. Uji ARIMA



```
showData(PersonReturn, placement=-20*200)
PersonReturn <- sqQuery(channel = 3,
names(PersonReturn) <- make.names(100)
showData(PersonReturn, placement=-20*200)

> showData(PersonReturn, placement=-20*200, font=getRcmdr('logFont'), maxwidth=80, maxheight=30)
> PersonReturn <- sqQuery(channel = 3, select = from [Hasil Olahan Prabingku2])
> showData(PersonReturn, placement=-20*200, font=getRcmdr('logFont'), maxwidth=30, maxheight=30)
> showData(PersonReturn, placement=-20*200, font=getRcmdr('logFont'), maxwidth=80, maxheight=30)
> PersonReturn <- sqQuery(channel = 3, select = from [Hasil Olahan Hari1])
> names(PersonReturn) <- make.names(100)
> showData(PersonReturn, placement=-20*200, font=getRcmdr('logFont'), maxwidth=80, maxheight=30)
```