

DAFTAR PUSTAKA

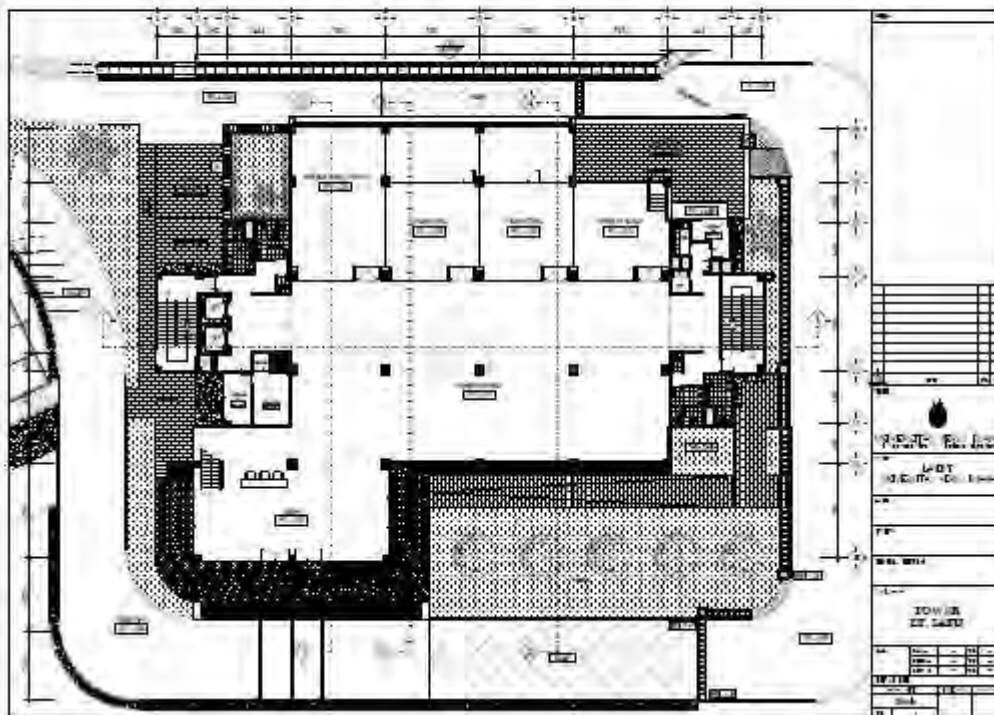
- Abdurarachim, Halim., Pasek, D.A., & Sulaiman. (2002). *Audit Energi, Modul 2, Energi Conservation Efficiency And Cost Saving Course*. Bandung: PT. Fiqry Jaya Mandiri.
- Arismunandar, Wiranto. (1991). *Peyegaran Udara*. Jakarta: Pradnya Paramita.
- Arifin. (2009, 19 November). *Perbaikan Faktor Daya*. Diambil dari website: <http://el-03.blogspot.com>.
- Badan Standardisasi Nasional. (2000). *Prosedur Audit Energi pada Bangunan Gedung*. SNI 03-6196-2000.
- Direktorat Pengembangan Energi. (2000). *Prosedur Audit Energi Pada Bangunan Gedung*. Jakarta: Departemen Pertambangan dan Energi.
- Effendi, Abdurachman. (2012). *Audit Awal Energi Listrik Pada Gedung Ps Kedokteran Universitas Lampung*. (Skripsi tidak di terbitkan). Universitas Lampung, Lampung.
- Guntoro, H. (2010, 04 September). *Kualitas Daya Listrik*. Diambil dari website: <http://dunia-listrik.blogspot.co.id>.
- Hilmawan, (2009, 04 September). *Efisiensi dengan Audit Energi*. Diambil dari website: <http://www.plnjateng.co.id>.
- Magdalena, M, (2009, 13 Juni). *Menekan Konsumsi dengan Audit Energi*. Diambil dari website: <http://puspiptek.info>.
- Mohamed, A K dan Kahn, M T E. (2008). *Contribution analysis of electrical energy management in the industrial and commercial sector a challenge to the Tanzania utility industry*. Journal of Energy in Southern Africa, 19, (1).
- Nagendrappa and Hi, P B. (2009). *Energy Audit And Management Of Induction Motor Using Field Test And Genetic Alogaritm*. Journal of Recent Trend in Engineering in India, 1, (3).

- Peraturan menteri Energi dan Sumber Daya Mineral. (2012). *Penghematan Pemakaian Tenaga Listrik*. Jakarta: Peraturan menteri ESDM.
- Saptono, H D. (2010). *Analisis Kebutuhan Energi Kalor pada Industri Tahu*. (Skripsi tidak di terbitkan). Universitas Muhammadiyah Surakarta, Surakarta.
- Sanurya, Putri. (2014). *Audit Energi dan Analisis Peluang Penghematan Konsumsi Energi Listrik Pada Rumah Tangga*. (Skripsi tidak di terbitkan). Universitas Muhammadiyah Surakarta, Surakarta.
- Zuhal. (1995). *Dasar Teknik Tenaga Listrik dan Elektronika Daya*. Jakarta: PT. Gramedia Pustaka Utama.

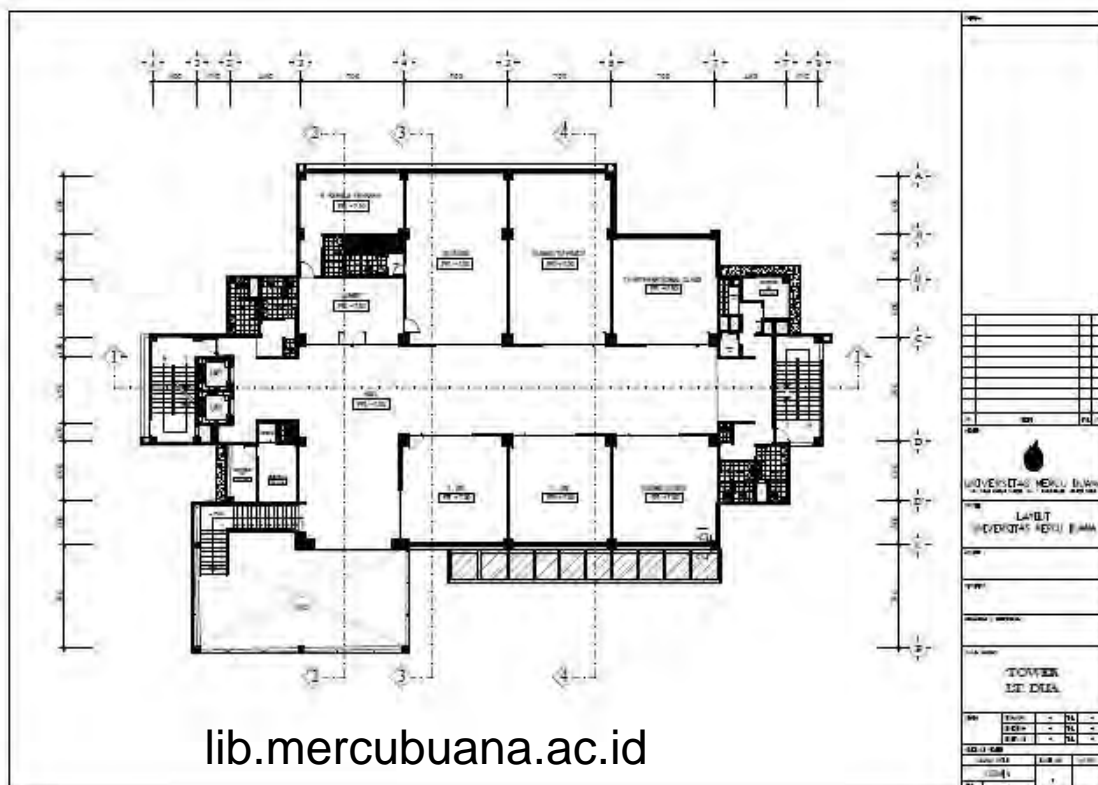


LAMPIRAN A

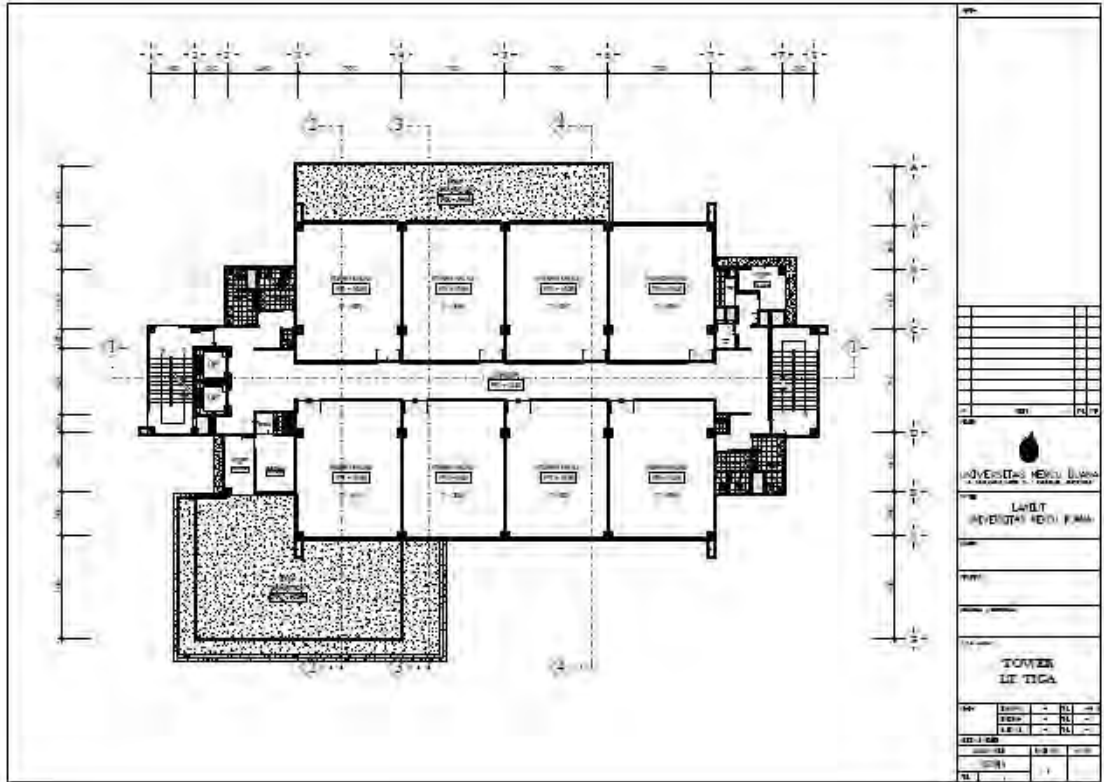
DENAH TOWER
LT. SATU



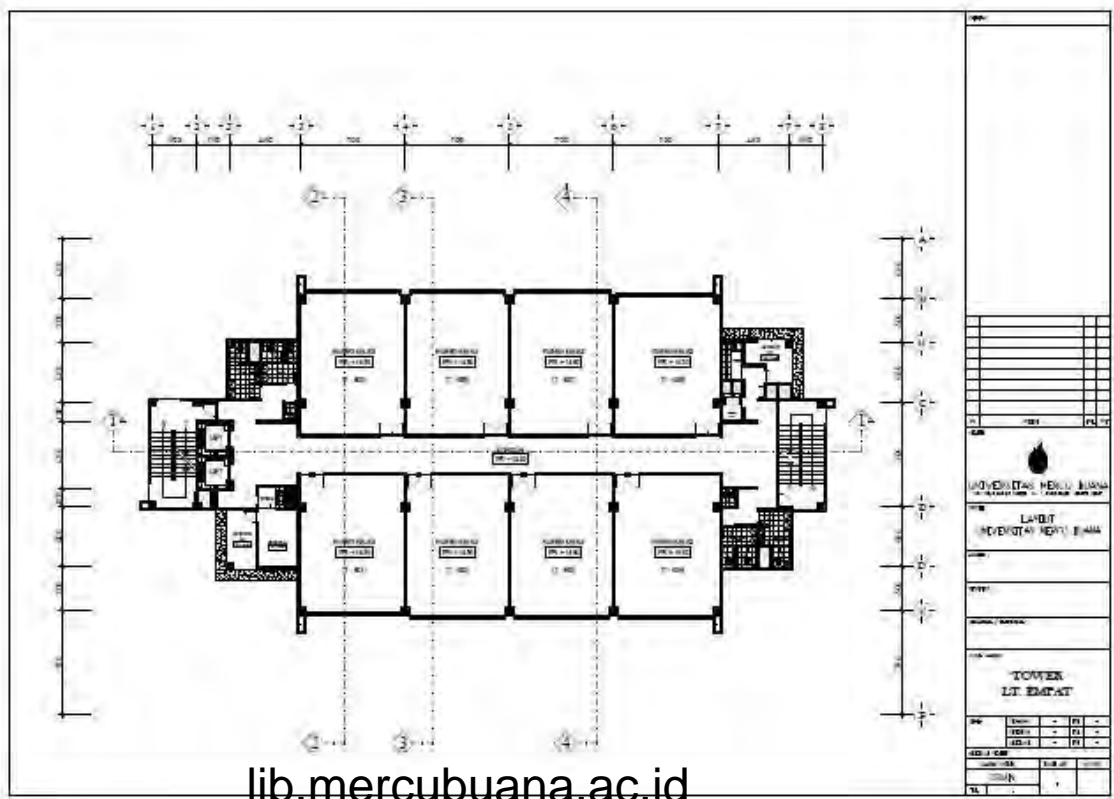
DENAH TOWER
LT. DUA



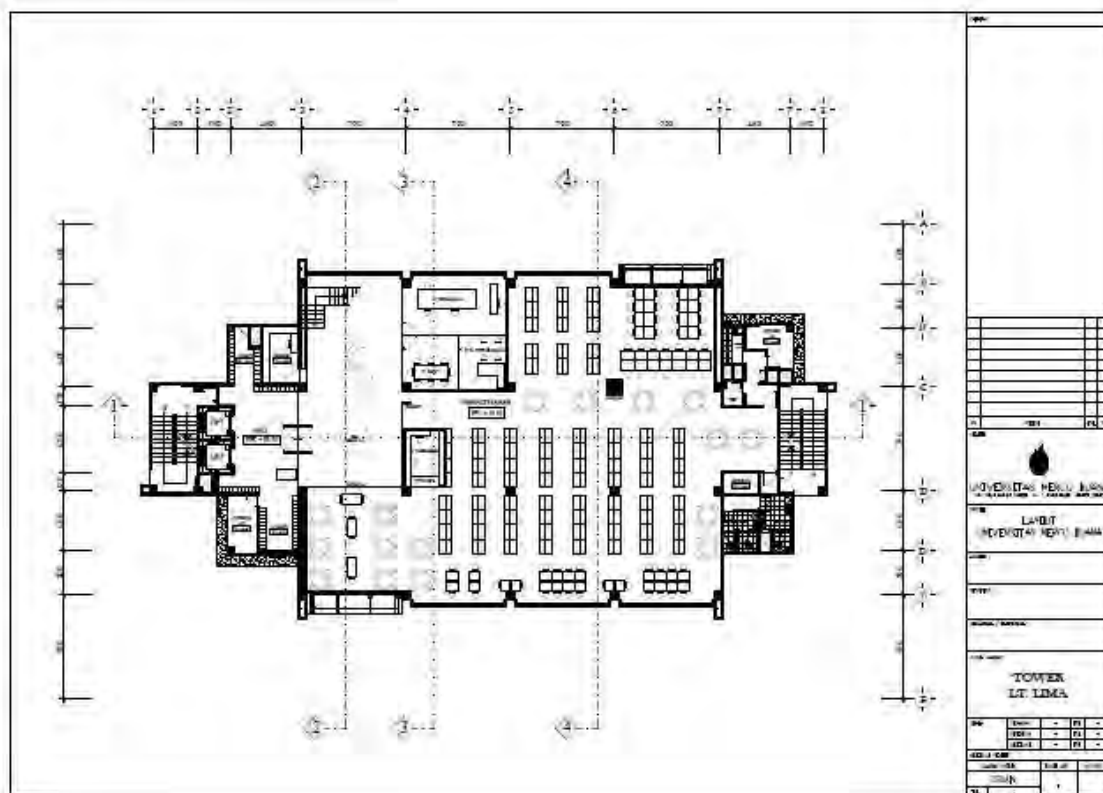
DENAH TOWER LT. TIGA



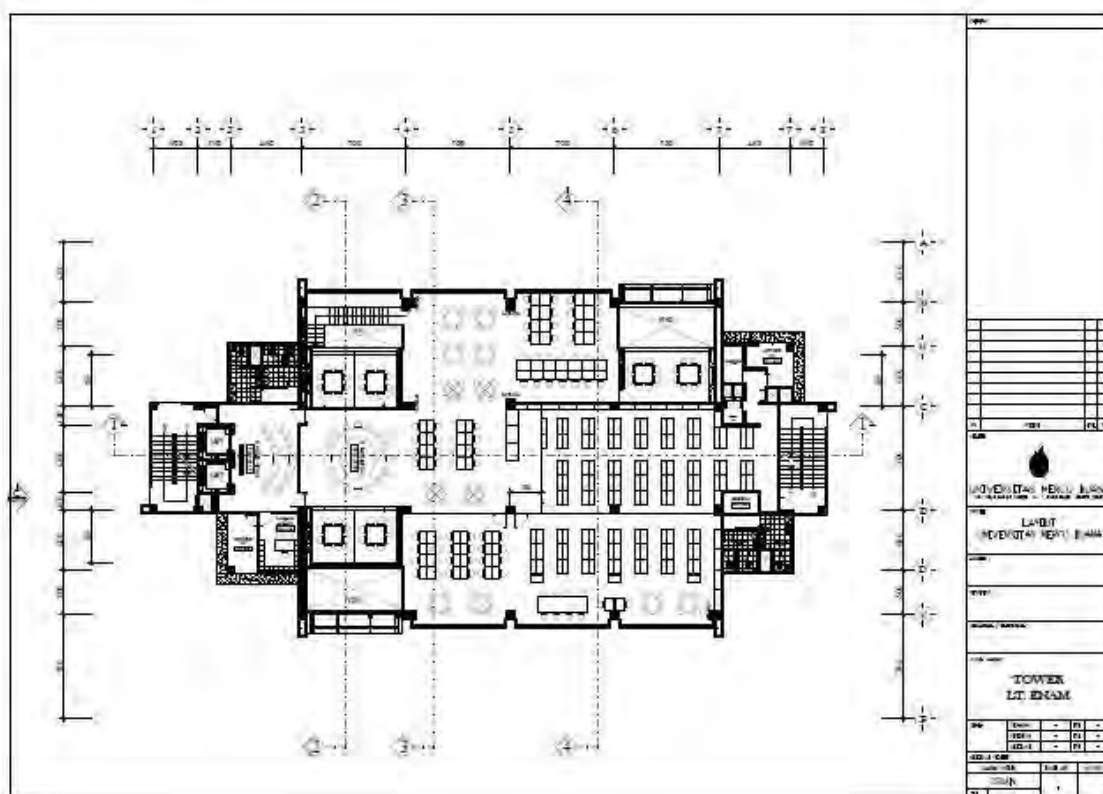
DENAH TOWER LT. EMPAT



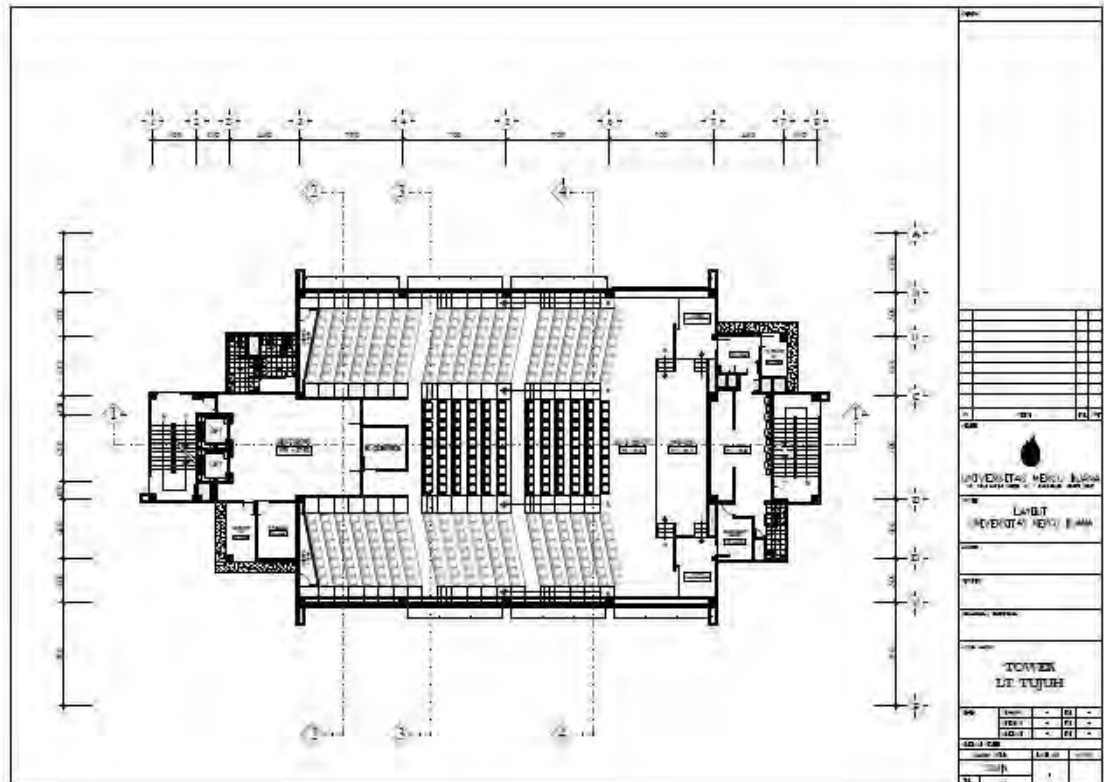
DENAH TOWER LT. LIMA



DENAH TOWER LT. ENAM



DENAH TOWER LT. TUJUH




 UNIVERSITAS
MERCU BUANA

LAMPIRAN B

**DIREKTORAT SUMBERDAYA
BIRO MANAJEMEN GEDUNG DAN SARANA
BAGIAN SARANA DAN PEMELIHARAAN ELEKTRIKAL**



NO	NO PELANGGAN	NAMA PELANGGAN	BULAN													
			SEPTEMBER '14	OKTOBER '14	NOVEMBER '14	DESEMBER '14	JANUARI '15	FEBRUARI '15	Agustus '15	Agustus '15	Agustus '15	Agustus '15	Agustus '15			
			Rp	kwh	Rp	kwh	Rp	kwh	Rp	kwh	Rp	kwh	Rp	kwh	Rp	kwh
1	54310264882	Rumah Kaca	149.422	46.317	192	259.819	0	98.615	128	82.960	107	68.485	78	68.485	78	
2	54310264887	Lab. UMB (GD-E)	26.693.508	7.557.436	17.450	24.848.834	269.582	22.261.534	241.488	12.091.081	130.806	7.266.208	38.822	7.266.208	38.822	
3	543102319296	Aula AWD (Rektorat)	47.159.111	595.052	44.807.925	46.347.919	33.523	41.648.865	30.124	28.241.795	30.638	13.359.431	14.489	13.359.431	14.489	
4	543101544251	AWD (GD-A & B)	72.207.093	1.362.827	65.016.401	67.506.933	73.243	60.830.494	65.989	45.299.507	49.147	30.445.895	33.029	30.445.895	33.029	
5	543300738899	Masjid Manarul Amal	5.791.567	2.083.340	114.500	4.600.856	91.200	4.125.552	4.470	3.791.933	82.160	3.144.048	68.100	3.144.048	68.100	
6	543300171358	Unik. UMB (GD-C)	52.182.840	963.102	49.829.908	29.390	49.239.900	53.422	46.662.553	50.620	29.777.366	32.304	19.415.449	21.081	19.415.449	
7	543300351484	Radio UMB	2.485.206	46.334	2.326	2.576.445	2.292	2.750.542	2.441	2.619.910	2.320	1.765.775	1.962	1.765.775	1.962	
8	543300476806	UMI (GD-D)	37.693.962	784.166	34.656.685	22.680	36.290.682	39.371	32.419.962	35.171	27.202.785	29.510	25.475.102	27.639	25.475.102	
9	543300576255	PASCA SARJANA	109.790.115	40.192.038	97.857.782	769.766	99.007.214	799.464	101.523.559	800.804	78.591.610	670.150	80.424.839	518.355	80.424.839	
10	BIAYA ADMINISTRASI BANK		27.000	27.000	27.000	27.000	27.000	27.000	27.000	27.000	27.000	27.000	27.000	27.000	27.000	
JUMLAH			354.069.830	53.338.974	324.074.195	1.974.368	330.706.602	1.356.868	312.354.676	1.231.251	327.644.946	1.027.141	163.392.732	721.136	163.392.732	

TOTAL PEMAKAIAN LISTRIK SEPTEMBER 2014 s.d FEBRUARI 2015 = Rp. 1.710.280.983

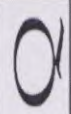
NO	NO PELANGGAN	NAMA PELANGGAN	BULAN													
			MARET '15	APRIL '15	MAY '15	JUNI '15	JULI '15	AGUSTUS '15	Agustus '15	Agustus '15	Agustus '15	Agustus '15				
			Rp	kwh	Rp	kwh	Rp	kwh	Rp	kwh	Rp	kwh	Rp	kwh	Rp	kwh
1	54310264882	Rumah Kaca	81.170	104	75.022	96	392.120	0	0	0	0	0	0	0	0	0
2	54310264887	Lab. UMB (GD-E)	29.026.639	282.342	23.381.851	253.644	24.388.006	264.540	25.270.189	274.134	10.413.813	112.932	7.266.208	48.344	7.266.208	
3	543102319296	Aula AWD (Rektorat)	47.620.280	51.685	45.927.630	48.851	46.469.539	50.937	45.172.879	49.009	19.821.875	14.334	14.363.053	10.388	14.363.053	
4	543101544251	AWD (GD-A & B)	68.831.825	74.081	67.665.633	73.415	64.469.524	69.947	64.814.018	70.321	32.021.240	35.390	30.366.269	32.943	30.366.269	
5	543300738899	Masjid Manarul Amal	3.581.608	77.600	4.206.653	91.160	5.368.790	116.380	4.734.730	102.620	3.249.110	70.380	3.684.053	84.160	3.684.053	
6	543300171358	Unik. UMB (GD-C)	47.347.117	51.368	47.632.445	51.678	48.504.214	53.709	50.485.463	54.777	27.171.266	29.476	25.401.794	27.556	25.401.794	
7	543300351484	Radio UMB	2.187.837	1.937	2.131.517	1.887	2.023.362	1.791	2.114.263	1.672	2.089.615	1.650	2.183.894	1.634	2.183.894	
8	543300476806	UMI (GD-D)	34.396.794	37.316	33.630.010	36.701	33.477.222	36.319	29.988.044	32.533	20.103.864	21.006	29.860.244	32.512	29.860.244	
9	543300576255	PASCA SARJANA	97.113.476	656.538	97.187.328	811.585	115.230.760	938.698	119.242.470	945.392	81.182.653	651.142	112.432.050	914.613	112.432.050	
10	BIAYA ADMINISTRASI BANK		22.500	22,500	22,500	22,500	22,500	22,500	22,500	22,500	22,500	22,500	22,500	22,500	22,500	
JUMLAH			327.209.446	1.433.851	321.160.399	1.399.616	344.824.057	1.532.319	341.842.586	1.532.629	196.665.886	937.311	225.891.105	1.150.748	225.891.105	

TOTAL PEMAKAIAN LISTRIK MARET 2015 s.d AGUSTUS 2015 = Rp. 1.754.618.549

TOTAL PEMAKAIAN LISTRIK SEPTEMBER 2014 s.d AGUSTUS 2015 = Rp. 3.464.899.532 / 12 bulan = Rp. 288.741.627,67 Rata-rata / Bulan

Dibuat oleh	Nama Fungsional	Paraf
Diperiksa oleh	Kaustag Sarana dan Pemeliharaan Elektrikal	
Diketahui oleh	Kabag. Pengelola Gedung dan Sarana	
	Kepala Biro Manajemen Gedung dan Sarana	

**DIREKTORAT SUMBERDAYA
BIRO MANAJEMEN GEDUNG DAN SARANA
BAGIAN SARANA DAN PEMELIHARAAN ELEKTRIKAL**



NO	NO PELANGGAN	NAMA PELANGGAN	BULAN															
			SEPTEMBER '15	OKTOBER '15	NOVEMBER '15	DESEMBER '15	JANUARI '16	FEBRUARI '16	Agustus 2016	Agustus 2016	Agustus 2016	Agustus 2016	Agustus 2016					
			Rp	kwh	Rp	kwh	Rp	kwh	Rp	kwh	Rp	kwh	Rp	kwh	Rp	kwh	Rp	kwh
1	543102464887	Lab. UMB (GD-E)	31.648.503	3.412.398	36.601.446	17.860	34.725.041	376.704	31.372.103	340.344	23.582.003	255.916	12.728.845	138.030				
2	543102319296	Aula AWD (Rektort)	46.163.783	335.447	50.942.463	55.270	49.535.521	35.827	44.318.556	32.055	33.925.119	36.805	24.781.379	26.853				
3	543101544251	AWD (GD-A & B)	67.847.004	676.833	71.473.898	77.548	65.334.353	70.886	59.790.376	64.870	48.561.877	52.708	41.378.467	44.892				
4	543300738899	Masjid Menorid Amal	4.023.254	1.866.331	5.573.386	120.820	4.878.875	107.940	5.011.938	111.316	4.275.948	311.668	3.566.693	777.058				
5	543300171358	Univ. UMB (GD-C)	47.949.844	453.541	48.999.302	28.380	47.240.396	51.253	36.969.220	42.278	26.267.766	30.666	27.389.068	29.723				
6	543300351484	Radio UMB	2.129.264	1.885	2.134.220	1.889	2.149.069	1.903	2.137.487	1.892	2.140.303	1.895	2.142.330	1.887				
7	543300478006	UMB (GD-D)	31.041.433	333.112	32.187.719	22.860	31.749.222	34.439	28.404.367	30.814	27.240.380	29.551	24.371.076	26.438				
8	543300578255	PASCA SARJANA	126.208.148	999.590	134.402.051	1.069.448	132.365.192	1.048.049	115.236.990	927.521	98.641.598	874.285	84.415.625	757.803				
9	BIAYA ADMINISTRASI BANK		24.000		24,000		24,000		24,000		24,000		24,000					
JUMLAH			357.635.313	2.343.825	362.338.515	1.353.485	368.898.689	1.727.002	325.267.037	1.329.459	266.678.020	1.593.393	220.825.464	1.802.724				

TOTAL PEMAKAIAN LISTRIK SEPTEMBER 2015 s.d FEBRUARI 2016 = Rp. 1.920.242.058

NO	NO PELANGGAN	NAMA PELANGGAN	BULAN													
			MARET '16	APRIL '16	M E I '16	J U N I '16	J U L I '16	A G U S T U S '16	Agustus 2016	Agustus 2016	Agustus 2016	Agustus 2016				
			Rp	kwh	Rp	kwh	Rp	kwh	Rp	kwh	Rp	kwh	Rp	kwh	Rp	kwh
1	543102464887	Lab. UMB (GD-E)	36.556.656	398.000	35.595.612	386.172	34.232.012	371.376	35.633.156	364.878	12.215.698	132.482	23.316.029	252.930		
2	543102319296	Aula AWD (Rektort)	50.867.347	55.297	53.064.724	57.672	52.335.370	56.781	51.632.004	56.018	19.512.217	14.110	32.774.993	23.704		
3	543101544251	AWD (GD-A & B)	68.469.496	74.320	70.481.888	76.471	63.897.849	69.436	69.565.050	75.478	24.595.578	26.661	40.136.519	43.544		
4	543300738899	Masjid Menorid Amal	5.470.517	1.185.676	5.010.528	108.605	4.811.416	104.264	5.862.971	127.104	4.479.723	97.066	3.768.856	81.659		
5	543300171358	Univ. UMB (GD-C)	45.479.772	49.342	46.981.058	50.971	44.843.315	48.652	44.963.213	48.803	17.633.259	19.127	27.253.104	29.565		
6	543300351484	Radio UMB	2.649.999	2.347	2.310.840	2.046	2.367.723	2.097	1.471.559	73.561	1.385.587	122.300	1.455.677	128.700		
7	543300478006	UMB (GD-D)	27.600.916	29.842	30.571.970	33.166	28.934.102	31.388	27.051.274	29.346	19.194.265	20.821	30.125.178	32.681		
8	543300578255	PASCA SARJANA	111.991.239	1.040.673	112.046.019	1.039.052	112.389.378	1.033.737	110.080.979	1.033.737	71.877.313	653.214	102.617.478	934.642		
9	BIAYA ADMINISTRASI BANK		24.000		24,000		24,000		24,000		24,000		24,000			
JUMLAH			349.239.342	2.843.396	358.888.699	1.754.086	343.935.165	1.665.014	344.344.285	1.806.924	179.913.840	1.062.801	261.471.804	1.927.427		

TOTAL PEMAKAIAN LISTRIK MARET 2016 s.d AGUSTUS 2016 = Rp. 3.746.193.423 / 12 bulan = Rp. 312.182.785,25

TOTAL PEMAKAIAN LISTRIK SEPTEMBER 2015 s.d AGUSTUS 2016 = Rp. 1.920.242.058 / 12 bulan = Rp. 160.020.171,50

Rata-rata / Bulan

Dibuat oleh Diperiksa oleh Diketahui oleh	Nama Fungsional Kasubag Sarana dan Pemeliharaan Elektrikal Kabag. Pengobols Gedung dan Sarana Kepala Biro Manajemen Gedung dan Sarana	Paraf
---	--	-------