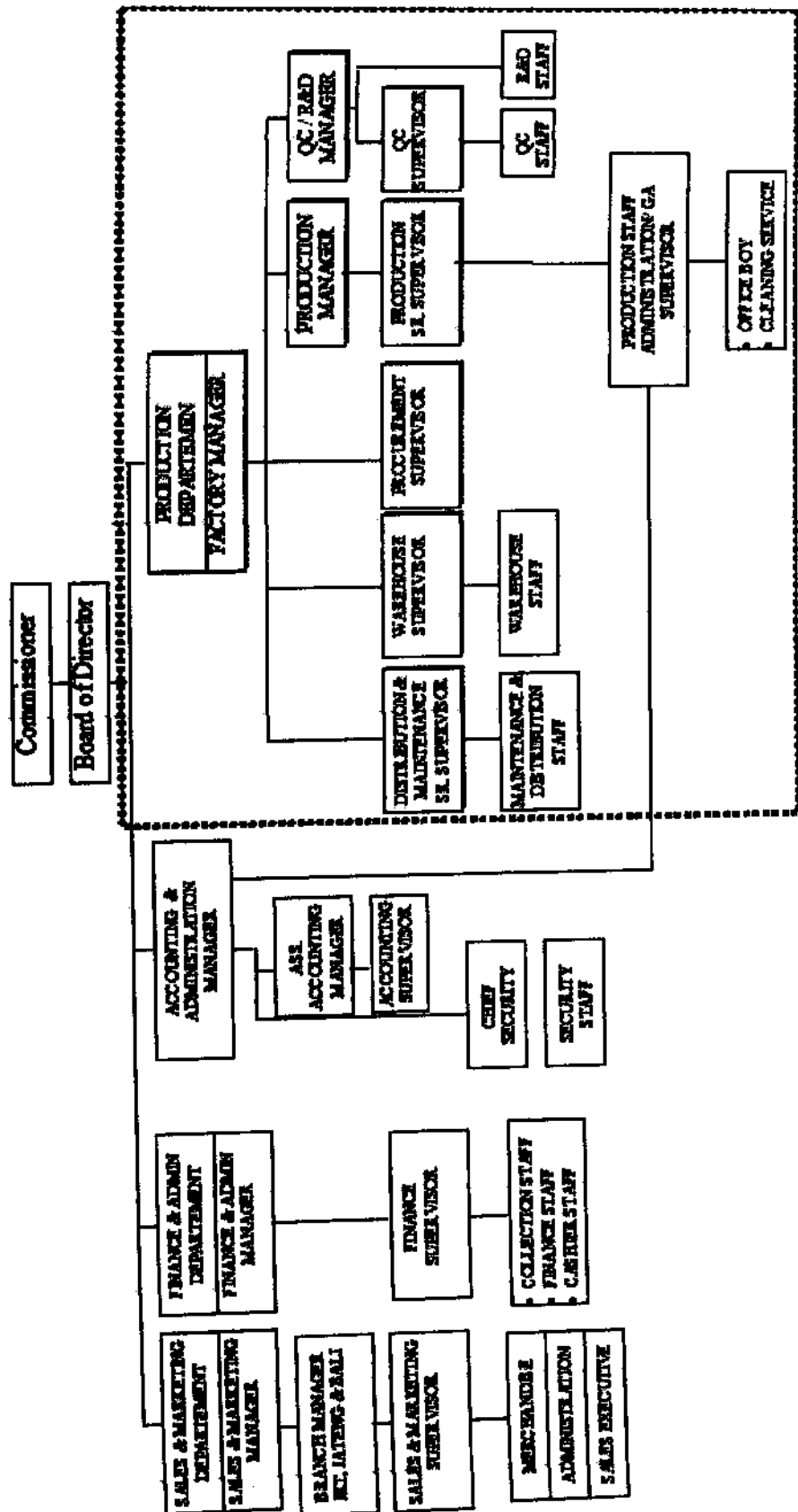


LAMPIRAN

Lampiran 1 - Struktur Organisasi – PT. Amanah Prima Indonesia

Struktur Organisasi - PT. Amanah Prima Indonesia (TOZA Natural Fruit Juices)



Lampiran 2 - Data jumlah pengiriman produk jadi periode tahun 2011

1	Orange Juice	6029	4995	6754	5907	6128	7808	8355	7603	8211	9114	10208	11739	92,850
2	Pink Guava Juice	4858	4655	5919	4498	5071	6559	7018	6386	6897	7656	8575	9861	77,954
3	Mango Juice	1831	1789	1817	1480	1560	1957	2094	1906	2058	2384	2558	2942	24,277
4	Soursop Juice	1496	1436	1621	1354	1491	1712	1832	1667	1800	1998	2238	2574	21,220
5	Kiwi Juice	635	605	751	842	910	8011	1082	984	1063	1180	1322	1520	11,905
6	Apple Juice	1095	997	1405	907	1108	1198	1282	1166	1260	1398	1566	1801	15,184
7	Pineapple Juice	802	871	879	910	989	1167	1249	1136	1227	1362	1526	1755	13,873
8	Lychee Juice	511	417	452	439	412	452	484	440	475	528	591	680	5,800
9	Grape Juice	307	305	369	372	348	450	482	438	473	525	588	677	5,334
10	Strawberry Juice	318	308	382	398	349	520	556	506	547	607	680	782	5,953
11	Lemon Juice	234	247	250	227	278	293	314	285	308	342	383	441	3,601
12	Lime Juice	189	184	187	391	241	277	296	270	291	323	362	416	3,228
13	Banana Juice	148	148	162	170	196	214	229	208	225	250	280	322	2,552
14	Cranberry Juice	152	90	149	92	109	113	121	110	119	132	148	170	1,504
15	Dates Juice	65	67	60	66	67	81	83	426	92	120	125	131	1,383
16	Tomato Juice	67	62	67	74	83	85	91	83	89	99	111	128	1,039
17	Aloe Vera Juice	52	51	59	52	52	53	57	52	56	62	69	80	694
18	Tamarillo Juice	45	52	64	61	64	65	70	63	68	76	85	98	811
19	Vegetables Juice	54	51	55	53	55	54	58	53	57	63	71	81	704
20	Pomegranate Juice	35	26	67	79	33	37	40	36	39	43	48	56	539
	Total	18923	17356	21469	18172	19544	24106	25790	23819	25357	28164	31534	36251	290,484

Lampiran 3 - Data jumlah kebutuhan bahan baku komposisi produk jadi kelas A dan B periode tahun 2011

1	Fructose Syrup	23,064	21,221	26,329	21,869	23,775	29,182	31,193	28,427	30,665	33,988	38,012	43,646	351,372
2	Fresh Guava	16,130	15,470	19,578	14,960	16,822	21,658	23,151	21,098	22,758	25,274	28,210	32,390	257,451
3	Fresh Orange	9,846	8,191	11,006	9,651	10,004	12,692	13,567	12,364	13,337	14,782	16,532	18,982	150,952
4	Brotol 5 Literan	17,081	15,683	19,481	16,233	17,592	21,747	23,246	21,184	22,852	25,329	28,328	32,527	261,285
5	Citric Acid	4,712	4,331	5,419	4,505	4,912	5,999	6,412	5,843	6,303	6,986	7,814	8,972	72,208
6	Mango Puree	4,629	4,524	4,594	3,751	3,951	4,944	5,286	4,815	5,196	5,762	6,448	7,407	61,309
7	Orange Cells	3,077	2,560	3,439	3,016	3,126	3,966	4,240	3,864	4,168	4,619	5,166	5,932	47,173
8	Fresh Kiwi	492	469	579	647	698	774	827	754	813	901	1,007	1,156	9,117
9	Fresh Sourclop	1,679	1,613	1,817	1,523	1,674	1,917	2,049	1,867	2,014	2,232	2,496	2,865	23,746
10	Fresh Pineapple	2,250	2,439	2,461	2,547	2,764	3,253	3,478	3,169	3,419	3,790	4,240	4,869	38,688
11	Fresh Apple	1,668	1,521	2,133	1,386	1,688	1,823	1,949	1,776	1,916	2,124	2,375	2,728	23,087
12	Label	17,081	15,683	19,481	16,233	17,592	21,747	23,246	21,184	22,852	25,329	28,328	32,527	261,285
13	Kalium Sorbat	85,4	78,4	97,4	81,2	88,0	108,7	116,2	105,9	114,3	126,6	141,6	162,6	1,306,4
14	Natrium Benzolat	85,4	78,4	97,4	81,2	88,0	108,7	116,2	105,9	114,3	126,6	141,6	162,6	1,306,4
15	Air	17,679	15,911	19,846	17,140	18,361	22,299	23,835	21,722	23,431	25,970	29,044	33,348	268,585
16	Tartazine	4,0	3,5	4,4	3,8	3,9	5,0	5,3	4,8	5,2	5,8	6,5	7,4	59,4
17	FAR Potasium	2,5	2,4	3,0	2,3	2,6	3,3	3,6	3,2	3,5	3,9	4,3	5,0	39,6
18	Green LMS	0,3	0,3	0,4	0,4	0,5	0,5	0,6	0,5	0,5	0,6	0,7	0,8	6,1
19	Thiamin Dioxide	0,8	0,7	0,8	0,7	0,8	0,9	0,9	0,8	0,9	1,0	1,1	1,3	10,8
20	Sunset Yellow	0,4	0,4	0,4	0,5	0,5	0,6	0,6	0,6	0,6	0,7	0,8	0,9	7,0
21	Caramel	0,6	0,5	0,7	0,5	0,6	0,6	0,6	0,6	0,6	0,7	0,8	0,9	7,7
	Total	119,569	109,783	136,369	113,633	123,146	152,231	162,723	148,289	159,964	177,302	198,297	227,689	1,828,993

Lampiran 4 - Data dari hasil wawancara dengan pihak manajemen

Biaya Penyimpanan = 17,07 % dari harga per unit, terdiri dari :

- Biaya operasional penyimpanan (listrik)
- Biaya bunga dari modal atas barang yang disimpan
- Pajak

Biaya Pemesanan = Rp. 1,385,- per order, terdiri dari :

- Biaya telepon, fax, dan sambungan internet
- Biaya pencetakan kertas *Purchase Order* (harga kertas per lembar + tinta)

Excess Cost = Harga Pokok Produksi (*COGS*) tiap item barang

Shortage Cost = Selisih Harga Pokok Produksi – Harga Jual

= Potensi Keuntungan

Lampiran 6 - Perhitungan Biaya Persediaan Bahan Baku Thn. 2011 dengan Model EOQ backorder

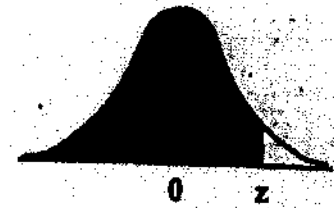
**PERHITUNGAN BIAYA PERSIDIAAN BAHAN BAKU TAHUN 2011
DENGAN MODEL EOQ BACKORDER**

Master Data :
 Biaya persimpangan (0) 17,07%
 Biaya pesan (k) 1,385 Rupee/order
 Running days 300 days/year

1	Fructose Syrup	351,372	6,230	2,196,077,536	1,067	1,271	2,342	2,978	18,611,687	3,177,605	382,956	3,560,561	118	3
2	Pink Guava Puree	257,451	8,428	2,169,793,130	1,439	1,005	4,291	4,793	40,399,295	6,897,441	354,711	7,252,151	54	6
3	Fresh Orange	150,952	11,090	1,660,476,950	1,878	724	2,816	2,878	31,658,036	5,405,931	288,667	5,693,697	52	6
4	Bread 5 Literan	261,285	4,620	1,207,135,618	789	1,200	1,742	2,342	10,819,702	1,847,266	301,552	2,148,818	112	3
5	Citric Acid	72,208	11,754	848,734,848	2,007	494	1,203	1,450	17,049,121	2,910,826	202,425	3,113,250	50	6
6	Mango Puree	61,309	12,300	754,095,054	2,100	451	1,022	1,247	15,342,480	2,619,448	188,236	2,807,684	49	6
7	Orange Cells	47,173	10,695	504,511,391	1,826	407	1,572	1,776	18,995,167	3,243,877	160,402	3,403,479	27	11
8	Kiwi Puree	9,117	46,986	428,393,389	8,022	146	152	225	10,575,270	1,805,534	86,355	1,891,889	41	7
9	Sourstop Puree	23,746	17,915	425,406,981	3,059	263	396	527	9,443,001	1,612,220	125,206	1,737,425	45	7
10	Pineapple Puree	38,680	8,495	332,454,513	1,467	388	645	839	7,207,397	1,230,531	138,150	1,368,681	46	7
11	Apple Puree	23,087	12,482	287,709,607	2,128	276	385	523	6,515,535	1,112,408	115,811	1,228,220	44	7
12	Labol	261,285	215	56,045,582	37	4,504	4,355	6,607	1,417,141	241,951	80,347	322,298	40	8
13	Kalium Sorbat	1,306	43,710	57,103,786	7,463	56	22	50	2,168,126	370,168	32,509	402,677	26	11
14	Natrium Benzoat	1,306	19,085	24,906,970	3,253	61	22	52	996,881	170,199	29,648	199,847	25	12
15	Air	268,585	30	8,057,560	5	12,074	895	6,932	207,974	35,508	30,808	66,316	39	8
16	Tamazine	59	95,080	5,646,263	16,220	11	1	7	633,640	108,183	7,247	115,430	9	34
17	FEAR Ponceau	40	89,000	3,525,092	15,195	9	1	5	472,472	80,666	5,900	86,566	7	40
18	Green LMS	6	153,000	929,982	26,122	4	0	2	289,207	49,377	2,353	51,730	3	93
19	Tiamin Dioxide	11	46,000	496,504	7,854	5	0	3	124,178	21,201	2,967	24,168	4	75
20	Sunset Yellow	7	51,013	358,760	8,710	4	0	2	108,964	18,604	2,412	21,016	3	91
21	Caronol	8	12,953	99,682	2,211	5	0	3	34,064	5,816	2,130	7,946	3	103
Total		0,828,993		16,971,959,220	112,852	23,359		33,241	193,069,339	32,963,958	2,540,792	25,503,850	57	5

Lampiran 7 - Area under the standardized normal

curve from $-\infty$ to $+z$



z	.00	.01	.02	.03	.04	.05	.06	.07	.08	.09
.0	.5000	.5040	.5080	.5120	.5160	.5199	.5239	.5279	.5319	.5359
.1	.5398	.5438	.5478	.5517	.5557	.5596	.5636	.5675	.5714	.5753
.2	.5793	.5832	.5871	.5910	.5948	.5987	.6026	.6064	.6103	.6141
.3	.6179	.6217	.6255	.6293	.6331	.6368	.6406	.6443	.6480	.6517
.4	.6554	.6591	.6628	.6664	.6700	.6736	.6772	.6808	.6844	.6879
.5	.6915	.6950	.6985	.7019	.7054	.7088	.7123	.7157	.7190	.7224
.6	.7257	.7291	.7324	.7357	.7389	.7422	.7454	.7486	.7517	.7549
.7	.7580	.7611	.7642	.7673	.7703	.7734	.7764	.7794	.7823	.7852
.8	.7881	.7910	.7939	.7967	.7995	.8023	.8051	.8078	.8106	.8133
.9	.8159	.8186	.8212	.8238	.8264	.8289	.8315	.8340	.8365	.8389
1.0	.8413	.8438	.8461	.8485	.8508	.8531	.8554	.8577	.8599	.8621
1.1	.8643	.8665	.8686	.8708	.8729	.8749	.8770	.8790	.8810	.8830
1.2	.8849	.8869	.8888	.8907	.8925	.8944	.8962	.8980	.8997	.9015
1.3	.9032	.9049	.9066	.9082	.9099	.9115	.9131	.9147	.9162	.9177
1.4	.9192	.9207	.9222	.9236	.9251	.9265	.9279	.9292	.9306	.9319
1.5	.9332	.9345	.9357	.9370	.9382	.9394	.9406	.9418	.9429	.9441
1.6	.9452	.9463	.9474	.9484	.9495	.9505	.9515	.9525	.9535	.9545
1.7	.9554	.9564	.9573	.9582	.9591	.9599	.9608	.9616	.9625	.9633
1.8	.9641	.9649	.9656	.9664	.9671	.9678	.9686	.9693	.9699	.9706
1.9	.9713	.9719	.9726	.9732	.9738	.9744	.9750	.9756	.9761	.9767
2.0	.9772	.9778	.9783	.9788	.9793	.9798	.9803	.9808	.9812	.9817
2.1	.9821	.9826	.9830	.9834	.9838	.9842	.9846	.9850	.9854	.9857
2.2	.9861	.9864	.9868	.9871	.9875	.9878	.9881	.9884	.9887	.9890
2.3	.9893	.9896	.9898	.9901	.9904	.9906	.9909	.9911	.9913	.9916
2.4	.9918	.9920	.9922	.9925	.9927	.9929	.9931	.9932	.9934	.9936
2.5	.9938	.9940	.9941	.9943	.9945	.9946	.9948	.9949	.9951	.9952
2.6	.9953	.9955	.9956	.9957	.9959	.9960	.9961	.9962	.9963	.9964
2.7	.9965	.9966	.9967	.9968	.9969	.9970	.9971	.9972	.9973	.9974
2.8	.9974	.9975	.9976	.9977	.9977	.9978	.9979	.9979	.9980	.9981
2.9	.9981	.9982	.9982	.9983	.9984	.9984	.9985	.9985	.9986	.9986
3.0	.9987	.9987	.9987	.9988	.9988	.9989	.9989	.9989	.9990	.9990
3.1	.9990	.9991	.9991	.9991	.9991	.9992	.9992	.9992	.9993	.9993
3.2	.9993	.9993	.9994	.9994	.9994	.9994	.9994	.9995	.9995	.9995
3.3	.9995	.9995	.9995	.9996	.9996	.9996	.9996	.9996	.9996	.9997
3.4	.9997	.9997	.9997	.9997	.9997	.9997	.9997	.9997	.9997	.9998