

I. LAMPIRAN SKALA PERNYATAAN VARIABEL

100
101
102

103
104

Jakarta, Desember 2012

Kepada Yth.
Karyawan MNCTV
Di tempat

Dengan hormat,

Saya yang bertanda tangan dibawah ini :

Nama : Tri Aji Kurniawan
Status : Mahasiswa Program studi S2 Magister Manajemen
NIM : 55110110148
Perguruan Tinggi : Univeristas Mercu Buana
Periode : 2010 - 2012

Dengan ini saya mohon bantuan kepada Bapak / Ibu untuk meluangkan waktu sejenak untuk berpartisipasi dalam jajak pendapat penelitian karya akhir yang sedang saya lakukan.

Mohon agar jawaban diisi sesuai dengan kondisi sebenarnya. Jawaban Bapak/ Ibu akan kami rahasiakan dan tidak berakibat apapun terhadap posisi/ jabatan Bapak/ Ibu. Hasil jawaban Bapak/ Ibu sepenuhnya akan saya gunakan untuk keperluan akademis.

Mohon diisi dengan cara memberikan tanda lingkaran kepada pernyataan berikut yang sesuai :

- 1 = Sangat tidak setuju
- 2 = Tidak setuju
- 3 = Netral / Ragu-ragu
- 4 = Setuju
- 5 =Sangat setuju

Demikian yang dapat saya sampaikan. Terima kasih banyak atas perhatian dan kerjasama Bapak/ Ibu sehingga proses penelitian ini berjalan dengan lancar.

Hormat saya,

Tri Aji Kurniawan, S.Psi

11

II. LAMPIRAN TABULASI DATA VARIABEL

TABULASI DATA SKALAR EKSPERIMEN (NO)

SI	1	2	3	4	5	6	7	8	9	10	11	12	13	14	15	16	17	18	19	20	21	22	23	24	25	26	27	28	29	30	31	32	33	34	35	36	37	38	39	40	41	42	43	44	FR	FR	FR	FR		
141	3	5	3	4	4	2	4	5	4	5	4	1	3	1	5	2	1	1	4	1	2	4	1	2	2	2	3	2	3	1	1	5	1	5	5	1	5	5	5	2	5	2	1	35	44	54	133			
142	5	4	5	4	1	5	5	5	5	5	2	4	2	4	1	2	1	5	1	1	4	1	2	1	1	1	1	1	1	2	5	2	5	5	1	5	5	5	5	1	5	1	2	33	50	50	133			
143	5	4	5	4	1	5	5	5	5	5	1	4	1	5	1	1	2	5	2	1	4	1	2	2	2	2	1	2	1	1	5	3	4	4	2	4	4	4	1	2	4	2	1	36	48	48	132			
144	5	4	5	4	2	3	4	5	3	4	1	5	1	5	1	2	5	1	1	2	5	1	1	2	1	2	1	2	1	1	1	5	2	5	5	1	5	5	5	1	5	1	2	35	46	51	132			
145	3	4	4	4	5	1	4	5	4	5	4	1	5	1	4	1	1	4	1	1	4	1	1	2	1	2	1	1	1	1	4	1	4	4	2	4	4	4	1	1	1	1	33	44	42	116				
146	3	4	4	3	3	1	4	5	4	5	4	1	4	1	5	1	1	5	1	1	4	1	1	1	2	1	1	1	1	1	5	1	4	4	4	4	4	4	1	1	1	1	33	44	42	113				
147	5	5	3	4	4	1	5	5	5	5	5	2	5	2	5	1	2	1	5	1	3	5	2	1	1	1	1	1	1	1	1	5	1	4	4	4	4	4	4	1	4	1	2	36	56	46	138			
148	5	3	4	5	4	1	5	5	5	5	3	5	3	4	1	3	2	4	2	1	4	3	2	1	2	2	2	1	3	3	4	3	4	4	1	4	4	4	4	1	4	1	2	36	55	49	140			
149	4	4	5	4	4	2	5	5	5	5	5	2	4	2	4	2	2	3	4	3	2	5	2	3	1	3	1	3	2	2	2	5	2	4	4	2	4	4	4	1	4	1	1	34	51	51	135			
150	4	5	4	5	4	3	5	5	5	5	5	1	4	1	4	3	1	2	4	2	3	5	1	2	2	2	2	2	3	1	1	5	1	4	1	1	1	4	1	4	2	1	2	33	46	52	131			
151	3	4	4	4	5	2	3	4	5	3	4	2	4	2	5	2	1	4	1	2	4	1	2	4	1	2	1	1	1	1	1	1	2	2	5	1	5	5	5	1	5	1	1	33	52	51	136			
152	3	4	4	3	3	1	3	4	5	3	4	1	5	1	5	2	1	4	3	2	2	1	4	3	2	2	2	1	2	1	3	3	5	2	5	5	2	5	5	5	1	5	1	1	33	52	51	136		
153	3	5	3	4	4	2	4	5	4	5	4	2	4	2	5	2	2	3	5	3	2	4	2	3	1	3	2	3	2	2	2	5	3	4	4	1	4	4	3	1	4	1	1	34	53	50	137			
154	5	3	4	5	4	3	4	5	4	5	4	1	5	1	5	3	1	2	5	2	3	5	1	2	2	2	3	2	3	1	1	5	2	5	5	1	5	5	5	1	5	1	1	35	50	57	142			
155	5	4	5	4	4	2	5	5	5	5	5	1	5	1	4	2	1	1	4	1	2	4	1	1	3	1	2	1	2	1	1	4	1	4	4	1	4	4	4	2	4	2	1	35	45	47	127			
156	3	5	4	5	4	1	5	5	5	5	5	2	4	2	5	1	2	1	5	1	1	4	2	1	2	1	1	1	1	2	2	5	1	4	4	1	4	4	4	3	4	3	2	35	50	56	131			
157	3	4	4	4	5	1	5	5	5	5	5	3	5	3	5	1	3	2	5	2	1	5	3	2	1	2	2	1	3	3	5	2	5	5	2	5	5	5	5	2	5	2	3	40	58	53	151			
158	4	4	4	3	3	2	5	5	5	5	5	2	5	2	4	2	3	4	3	2	4	2	3	1	3	3	3	2	2	2	2	4	3	4	4	3	4	4	1	4	1	2	38	54	49	141				
159	4	5	3	4	4	3	3	4	5	3	4	1	4	1	4	3	1	2	4	2	3	5	1	2	2	2	2	2	3	1	1	5	2	4	4	2	4	4	4	2	4	2	1	34	46	50	130			
160	4	3	4	5	4	2	3	4	5	3	4	1	4	1	4	2	1	1	4	1	2	5	1	3	1	1	1	2	1	1	5	1	4	4	1	4	4	4	3	4	3	2	32	43	47	122				
161	5	4	5	4	4	1	4	5	4	5	4	2	4	2	5	1	2	1	4	1	1	4	1	2	1	1	1	1	1	2	2	5	1	5	5	2	5	5	5	5	2	5	2	30	45	51	135			
162	5	5	4	5	4	1	4	5	4	5	4	1	4	1	5	1	1	2	5	2	1	1	2	5	2	1	1	1	1	1	2	2	1	1	5	2	5	5	3	5	5	5	1	5	1	2	30	46	50	135
163	5	4	4	5	2	5	5	5	5	5	2	4	2	5	2	2	1	5	1	2	4	2	1	1	3	1	3	2	2	2	2	5	1	4	4	2	4	4	4	4	1	4	1	1	37	50	46	133		
164	5	4	4	3	3	1	5	5	5	5	5	1	5	1	5	1	1	2	5	2	1	5	1	2	2	2	2	2	1	1	5	1	5	5	1	5	5	5	5	2	5	2	1	35	45	47	127			
165	5	5	3	4	4	2	5	5	5	5	5	1	5	1	4	2	1	1	4	1	2	4	1	1	1	1	1	1	1	1	2	1	4	4	4	1	4	4	4	3	4	3	2	34	45	46	125			
166	4	3	4	5	4	1	5	5	5	5	1	4	1	4	1	1	1	4	1	1	1	4	1	1	1	1	1	1	1	1	1	4	4	4	1	4	4	4	3	4	3	2	34	45	46	125				
167	4	4	5	4	1	3	4	5	3	4	1	4	2	5	1	2	1	4	1	1	4	2	1	1	1	1	1	1	1	2	2	5	2	5	5	2	5	5	5	3	5	2	2	37	44	51	131			
168	5	5	4	5	4	1	3	4	5	3	4	2	4	1	5	1	1	2	5	2	1	4	1	2	1	2	1	1	1	1	5	1	5	5	3	5	5	5	5	2	5	3	2	30	47	48	134			
169	4	4	4	4	5	2	4	5	4	5	4	1	4	1	5	1	1	5	2	1	1	1	1	1	1	1	1	1	1	1	1	5	1	4	4	2	4	4	4	1	4	2	3	37	43	45	125			
170	5	4	4	3	3	1	4	5	4	5	4	1	4	1	5	1	1	1	5	1	1	1	1	1	1	1	1	1	1	1	2	2	5	2	5	5	1	5	5	5	2	5	1	2	34	45	51	130		
171	5	4	4	3	3	1	4	5	4	5	4	1	4	1	5	1	1	1	5	1	1	1	1	1	1	1	1	1	1	1	1	2	2	5	2	5	5	1	5	5	5	2	5	1	2	34	45	51	130	
172	4	5	3	4	4	1	5	5	5	5	5	1	5	1	4	1	1	1	4	1	1	4	1	2	1	2	1	2	1	1	1	4	3	4	4	2	4	4	4	3	4	2	1	34	46	45	125			
173	4	5	3	4	4	2	5	5	5	5	5	1	4	2	5	1	2	1	5	1	1	4	1	1	1	1	1	1	1	1	1	5	2	4	4	3	4	4	4	2	4	3	2	35	48	46	129			
174	4	4	5	4	1	5	5	5	5	5	2	5	3	5	1	3	2	5	1	1	2	5	1	1	2	1	1	1	1	1	1	4	1	4	4	1	4	4	4	1	4	1	2	33	50	46	129			
175	4	4	4	4	5	1	3	4	5	3	4	2	4	1	4	3	1	2	4	2	3	5	2	1	1	1	1	1	1	1	2	2	5	1	4	1	4	4	3	4	2	4	1	32	45	46	123			
176	4	4	4	5	1	3	4	5	3	4	2	4	1	4	3	1	2	4	2	3	5	2	1	1	1	1	1	1	1	1	2	2	5	1	4	1	4	4	3	4	2	4	1	32	47	46	128			
177	5	4	4	3	3	1	3	4	5	3	4	1	4	2	4	2	2	1	4	1	2	5	3	2	1	2	2	2	1	3	3	5	1	4	2	4	4	3	4	3	4	2	1	41	52	52	147			
178	5	3	4	4	2	4	5	4	5	4	5	4	2	4	3	2	4	3	2	4	2	3	4	3	2	5	1	2	2	1	2	3	1	5	3	4	4	2	4	4	1	1	2	3	36	51	52	139		
179	5	3	4	4	2	4	5	4	5	4	5	4	2	4	3	2	4	3	2	4	2	3	4	3	2	5	1	2	2	1	2	3	1	5	3	4	4	2	4	4	1	1	2	3	36	51	52	139		
180	5	4	4	2	5	5	5	5	5	2	4	1	5	3	1	2	4	2	3	4	2	1	3	1	1	1	2	2	2																					

TARLASIDATASKUAMARKURTIHIN(X)

S/1	1	2	3	4	5	6	7	8	9	10	11	12	13	14	15	16	17	18	19	20	21	22	23	24	25	26	27	28	29	30	31	32	33	34	35	36	37	38	39	40	41	42	43	44	FR	FRI	SAB	SUN													
213	5	4	3	3	1	4	5	1	5	1	2	1	2	2	1	2	1	1	1	1	1	1	1	1	1	2	2	5	1	5	5	5	5	5	5	5	5	5	5	5	5	5	5	5	2	3	37	45	52	134											
214	4	3	1	5	4	2	5	5	5	5	1	1	1	2	1	2	1	1	2	5	3	2	1	2	2	2	1	3	3	5	1	4	1	4	4	4	4	4	4	4	4	4	4	4	4	4	2	4	1	2	35	52	46	133							
215	5	4	5	4	3	5	5	5	5	2	4	1	5	1	1	1	1	1	1	1	1	1	1	1	1	1	2	2	4	2	3	1	3	1	3	2	2	2	5	2	5	5	1	5	5	5	1	5	1	1	37	54	51	142							
216	4	5	1	5	1	2	5	5	5	5	1	4	1	5	1	1	1	1	1	1	1	1	1	1	1	1	2	2	1	2	3	1	1	5	3	5	5	2	5	5	5	5	5	5	1	5	2	1	36	49	53	138									
217	4	4	3	3	1	5	5	5	5	1	1	1	1	1	1	1	1	1	1	1	1	1	1	1	1	1	2	2	2	5	2	4	4	3	4	4	4	4	4	4	4	4	4	4	4	2	4	3	2	36	46	47	129								
218	4	3	4	5	1	2	3	4	5	3	4	1	5	2	5	1	2	1	5	3	2	7	2	1	2	1	1	3	3	5	1	5	2	5	5	5	5	5	5	5	5	5	5	5	5	5	5	2	3	37	52	50	139								
219	4	4	5	1	1	2	3	1	5	3	1	1	5	3	1	2	3	2	1	1	4	2	3	1	3	2	3	2	2	2	4	1	4	4	1	1	1	1	1	1	1	1	1	1	1	1	1	1	1	2	36	50	45	131							
220	3	5	1	5	1	1	5	4	5	1	2	1	2	5	3	2	3	5	2	2	1	1	2	2	2	3	2	1	1	5	2	4	1	4	4	4	4	4	4	4	4	4	4	4	4	4	1	4	1	1	35	48	52	135							
221	5	1	1	3	3	2	4	5	1	5	1	1	5	1	5	2	1	2	5	3	3	5	1	1	3	1	2	1	1	5	3	5	5	2	5	5	5	5	5	5	5	5	5	5	5	5	5	2	1	35	46	57	138								
222	5	3	1	5	1	1	5	5	5	5	1	5	2	1	4	2	4	2	4	2	4	2	3	1	1	1	2	2	4	2	4	4	1	4	4	4	4	4	4	4	4	4	4	4	4	4	4	4	4	2	4	1	2	33	49	46	128				
223	5	4	5	4	1	5	5	5	5	1	1	3	1	2	3	2	1	1	1	1	1	1	1	1	1	1	2	2	2	1	3	3	5	1	4	4	2	4	4	4	4	4	4	4	4	4	4	4	4	2	4	1	2	39	52	46	137				
224	5	5	4	5	1	1	4	5	1	5	1	1	1	1	2	1	3	2	3	4	2	2	5	2	3	1	3	3	2	2	2	5	1	4	4	1	4	4	4	4	4	4	4	4	4	4	4	4	4	2	4	1	2	39	50	50	139				
225	5	5	4	5	1	2	1	5	4	5	1	2	4	1	5	2	1	2	1	3	3	1	1	2	2	2	2	3	1	1	5	3	5	5	1	5	5	5	5	5	5	5	5	5	5	5	5	5	5	5	1	1	36	48	57	141					
226	4	1	4	3	1	1	5	5	5	5	3	4	1	5	1	1	1	1	1	1	1	1	1	1	1	1	1	1	1	5	2	5	5	1	5	5	5	5	5	5	5	5	5	5	5	5	5	5	5	5	1	1	32	47	51	130					
227	1	5	5	4	1	5	5	5	5	5	2	1	2	5	1	2	1	5	1	1	1	1	1	1	1	1	1	1	1	1	5	1	1	1	2	4	4	4	4	4	4	4	4	4	4	4	4	4	4	4	2	1	35	48	44	127					
228	5	5	3	1	2	5	5	5	5	5	1	5	3	5	1	1	5	2	1	1	1	1	1	1	1	1	1	1	1	2	2	1	3	3	5	1	4	4	2	4	4	4	4	4	4	4	4	4	4	4	2	1	36	52	54	142					
229	1	3	1	5	1	1	5	5	5	5	2	5	2	3	2	3	4	2	2	1	1	2	1	2	1	2	1	1	1	1	3	3	4	4	1	4	4	4	4	4	4	4	4	4	4	4	4	4	4	4	1	1	31	50	49	130					
230	5	1	5	3	3	3	3	5	3	3	4	1	5	2	1	3	5	3	3	3	3	3	3	3	3	3	3	3	3	1	5	2	4	4	2	4	4	4	4	4	4	4	4	4	4	4	4	4	4	2	1	35	46	46	127						
231	1	5	1	5	1	2	3	1	5	3	4	2	5	1	1	1	5	2	2	5	2	1	2	1	1	1	1	1	1	2	5	1	5	5	1	5	5	5	5	5	5	5	5	5	5	5	5	5	5	5	2	5	1	2	34	49	49	132			
232	1	4	1	1	5	1	1	5	1	5	1	1	5	2	4	1	2	1	1	1	1	1	1	1	1	1	1	1	1	1	1	1	1	1	1	1	1	1	1	1	1	1	1	1	1	1	1	1	1	1	1	1	33	44	42	119					
233	1	1	1	3	3	2	4	5	1	5	1	1	1	1	1	1	1	1	1	1	1	1	1	1	1	1	1	1	1	1	5	2	4	4	1	4	4	4	4	4	4	4	4	4	4	4	4	4	4	4	4	1	1	30	41	45	117				
234	5	1	1	4	5	3	5	5	5	5	2	1	2	4	1	2	1	1	2	2	5	2	1	2	1	2	1	1	1	1	5	3	4	4	1	4	4	4	4	4	4	4	4	4	4	4	4	4	4	4	4	1	1	34	49	47	130				
235	5	1	1	3	3	2	5	5	5	5	3	1	3	5	2	1	2	4	1	4	1	1	1	1	1	1	1	1	1	1	1	5	2	5	5	2	5	5	5	5	5	5	5	5	5	5	5	5	5	5	5	5	5	2	1	34	46	51	131		
236	5	3	1	5	1	1	5	1	5	1	2	4	1	1	1	1	1	1	1	1	1	1	1	1	1	1	1	1	1	1	1	1	1	1	1	1	1	1	1	1	1	1	1	1	1	1	1	1	1	1	1	1	1	37	46	44	127				
237	5	1	5	4	3	2	1	5	1	5	2	1	4	2	5	1	2	1	1	1	1	1	1	1	1	1	1	1	1	1	1	1	1	1	1	1	1	1	1	1	1	1	1	1	1	1	1	1	1	1	1	1	1	38	45	51	134				
238	5	5	4	5	4	3	5	5	5	5	3	3	5	2	1	2	5	1	3	4	1	2	2	2	2	2	2	2	2	2	2	1	5	2	5	5	1	5	5	5	5	5	5	5	5	5	5	5	5	5	5	2	5	1	2	36	50	54	140		
239	4	4	4	4	5	2	5	5	5	5	2	1	2	5	1	1	3	5	1	3	4	1	1	2	1	2	1	2	1	1	5	1	4	4	2	4	4	4	4	4	4	4	4	4	4	4	4	4	4	4	4	4	2	1	35	47	49	131			
240	1	1	3	3	1	5	5	5	5	5	1	5	1	5	7	2	5	1	2	5	1	2	1	2	1	1	1	1	1	1	5	1	5	5	3	5	5	5	5	5	5	5	5	5	5	5	5	5	5	5	5	2	5	3	2	37	47	53	137		
241	5	4	1	3	3	1	5	5	5	5	2	5	1	4	1	1	1	1	1	1	1	1	1	1	1	1	1	1	1	1	1	1	1	1	1	1	1	1	1	1	1	1	1	1	1	1	1	1	1	1	1	1	1	36	45	44	125				
242	4	3	4	5	1	2	3	1	5	3	4	1	4	3	5	1	2	1	5	1	1	1	1	1	1	1	1	1	1	1	2	5	1	4	4	1	4	4	4	4	4	4	4	4	4	4	4	4	4	4	4	4	4	2	3	31	47	49	121		
243	5	4	5	4	3	3	1	5	3	4	1	5	2	5	3	1	2	5	1	3	2	1	7	2	2	1	3	3	5	2	5	5	1	5	5	5	5	5	5	5	5	5	5	5	5	5	5	5	5	5	5	5	5	1	1	37	53	51	141		
244	1	5	1	5	4	2	1	5	1	5	1	1	5	1	4	2	1	1	1	1	1	1	1	1	1	1	1	1	1	1	2	3	3	3	2	2	2	1	3	4	1	2	4	4	4	4	4	4	4	4	4	4	4	1	2	37	49	45	131		
245	1	1	1	3	3	1	1	5	1	5	4	1	4	1	1	3	2	1	3	1	5	1	2	2	2	2	2	2	2	2	1	5	2	1	3	4	4	4	4	4	4	4	4	4	4	4	4	4	4	4	4	4	4	2	4	3	2	36	44	48	128
246	3	4	3	4	1	5	5	5	5	5	2	1	2	3	1	2	1	4	3	2	5	2	1	3	1	1	3	2																																	

TAABELIDATA SKALAREKRUITMEN(X)

SI	1	2	3	4	5	6	7	8	9	10	11	12	13	14	15	16	17	18	19	20	21	22	23	24	25	26	27	28	29	30	31	32	33	34	35	36	37	38	39	40	41	42	43	44	FIR	FRI	FII	ISR	
277	5	4	4	4	5	2	5	5	5	5	2	4	1	5	2	1	1	4	3	1	4	1	2	2	2	3	2	3	1	1	5	1	5	5	2	5	5	5	2	5	2	5	2	2	40	30	33	145	
278	4	4	4	3	3	1	3	4	5	3	4	3	4	2	4	1	1	1	4	2	2	5	1	1	3	1	2	1	2	1	1	5	3	4	4	1	4	4	4	4	1	4	1	1	30	43	47	120	
279	4	5	3	4	4	1	3	4	5	3	4	2	4	1	5	2	2	3	4	1	1	4	2	1	2	1	1	1	1	1	2	2	5	2	5	5	2	5	5	5	5	2	5	2	2	36	45	52	132
280	5	3	4	5	4	1	4	5	4	5	4	1	4	1	5	1	1	2	5	1	2	4	3	2	1	2	2	1	3	3	5	1	5	5	3	5	5	5	5	5	3	5	3	3	42	49	52	143	
281	4	4	5	4	4	2	4	5	4	5	4	2	4	2	5	1	2	1	5	2	1	4	2	3	1	3	3	2	2	2	5	1	4	4	2	4	4	4	4	2	4	2	2	40	52	45	137		
282	5	5	4	5	4	1	3	4	5	3	4	3	5	1	5	2	1	1	5	1	5	1	2	2	2	2	3	1	1	5	2	5	5	1	5	5	5	1	5	1	1	36	49	51	135				
283	4	4	4	5	1	3	4	5	3	4	2	5	2	4	1	1	2	4	2	2	4	1	1	1	1	1	1	1	1	2	1	1	4	3	4	4	1	4	4	4	1	4	1	1	31	43	45	119	
284	4	4	4	3	2	4	5	4	5	4	1	4	1	5	2	2	1	5	1	1	4	1	1	2	1	1	1	1	1	1	5	2	4	4	2	4	4	4	4	2	4	2	2	33	45	46	122		
285	4	5	5	4	1	5	5	5	5	5	1	5	1	5	1	1	2	5	1	1	5	2	1	1	1	2	1	1	2	2	5	1	5	5	3	5	5	5	5	3	5	3	3	42	50	51	143		
286	5	5	3	4	4	2	5	5	5	5	2	5	1	4	1	2	1	4	2	1	4	1	2	1	2	1	2	1	1	1	4	1	4	4	2	4	4	4	4	2	4	2	2	36	50	42	128		
287	5	3	4	5	4	1	5	5	5	5	3	4	2	4	3	1	1	4	1	1	5	1	1	1	1	1	1	1	1	2	1	1	5	1	4	4	2	4	4	4	1	4	1	1	33	47	46	126	
288	5	4	5	4	4	1	3	4	5	3	4	2	4	1	4	2	2	4	2	2	5	2	1	2	1	1	1	1	1	2	2	5	1	4	4	2	4	4	4	4	2	4	2	2	36	46	45	127	
289	5	5	4	5	4	1	3	4	5	3	4	1	5	2	5	1	2	1	5	1	3	5	1	2	1	2	1	1	1	5	2	5	1	5	5	5	1	5	1	5	1	5	1	3	36	48	50	134	
290	5	4	4	4	5	2	4	5	4	5	4	1	5	1	4	1	2	4	1	2	4	1	1	1	1	1	1	1	1	2	1	1	4	3	4	4	2	4	4	4	4	2	4	2	2	36	43	47	125
291	4	4	4	3	1	4	5	4	5	4	2	4	1	5	2	2	1	5	1	1	4	1	1	2	1	1	1	1	1	1	1	5	2	4	4	3	4	4	4	3	4	3	1	36	43	47	125		
292	4	4	5	4	4	2	5	5	5	5	1	5	1	1	1	1	5	1	2	5	1	1	1	1	1	1	1	1	1	1	5	1	5	5	2	5	5	5	2	5	2	1	36	48	50	133			
293	5	5	4	5	4	1	4	5	4	5	4	2	5	1	4	2	1	1	4	1	3	4	2	1	1	1	1	1	1	1	2	2	4	1	4	4	1	4	4	4	1	4	1	2	36	45	44	124	
294	4	4	4	4	5	1	4	5	4	5	4	1	4	1	1	1	4	1	1	4	1	2	5	3	2	1	2	2	2	1	3	3	5	2	4	4	1	4	4	4	1	4	1	3	38	47	44	129	
295	5	4	4	3	3	1	5	5	5	5	1	5	1	4	1	2	1	4	1	1	4	2	3	1	3	1	3	2	2	2	4	2	4	4	2	4	4	4	4	2	4	2	1	36	50	44	130		
296	4	4	5	4	4	2	5	5	5	5	1	4	1	4	2	2	1	4	1	1	5	1	2	2	1	2	3	1	1	5	2	4	4	3	4	4	4	4	3	4	3	1	37	48	49	134			

1. ...
 2. ...
 3. ...
 4. ...
 5. ...
 6. ...
 7. ...
 8. ...
 9. ...
 10. ...
 11. ...
 12. ...
 13. ...
 14. ...
 15. ...
 16. ...
 17. ...
 18. ...
 19. ...
 20. ...
 21. ...
 22. ...
 23. ...
 24. ...
 25. ...
 26. ...
 27. ...
 28. ...
 29. ...
 30. ...
 31. ...
 32. ...
 33. ...
 34. ...
 35. ...
 36. ...
 37. ...
 38. ...
 39. ...
 40. ...
 41. ...
 42. ...
 43. ...
 44. ...
 45. ...
 46. ...
 47. ...
 48. ...
 49. ...
 50. ...
 51. ...
 52. ...
 53. ...
 54. ...
 55. ...
 56. ...
 57. ...
 58. ...
 59. ...
 60. ...
 61. ...
 62. ...
 63. ...
 64. ...
 65. ...
 66. ...
 67. ...
 68. ...
 69. ...
 70. ...
 71. ...
 72. ...
 73. ...
 74. ...
 75. ...
 76. ...
 77. ...
 78. ...
 79. ...
 80. ...
 81. ...
 82. ...
 83. ...
 84. ...
 85. ...
 86. ...
 87. ...
 88. ...
 89. ...
 90. ...
 91. ...
 92. ...
 93. ...
 94. ...
 95. ...
 96. ...
 97. ...
 98. ...
 99. ...
 100. ...

TABULASI DATA SKALA PELATIHAN (X2)

S-1	1	2	3	4	5	6	7	8	9	10	11	12	13	14	15	16	F_PLTII	F_PLTIII	F_PLTIII	F_PLTIV	TS_PLT
1	5	5	5	1	5	5	1	1	1	3	5	2	5	1	5	1	16	12	14	8	50
2	4	5	4	1	1	5	1	2	2	2	1	2	1	1	5	1	15	11	12	9	47
3	1	5	1	2	1	1	1	2	2	1	5	1	5	1	4	2	14	12	12	9	47
4	4	5	1	2	1	1	1	1	1	2	5	1	5	2	4	2	14	12	14	8	48
5	4	5	4	1	1	1	1	1	1	3	5	1	5	3	4	1	13	13	16	7	49
6	4	5	1	1	1	1	1	2	1	1	2	4	1	1	2	1	13	11	13	7	44
7	3	5	1	1	1	1	1	1	1	1	1	3	2	1	2	1	13	11	11	8	43
8	1	5	1	2	1	1	1	2	2	1	1	1	1	3	1	1	13	13	12	10	48
9	3	5	1	2	1	1	1	3	2	2	1	2	1	1	1	2	14	12	14	10	50
10	1	5	1	3	1	5	2	3	3	3	4	1	1	1	5	3	17	12	14	11	54
11	3	4	5	2	5	5	2	2	2	2	2	1	2	1	2	5	15	13	12	11	51
12	1	5	4	1	1	5	1	1	1	1	1	4	3	1	3	5	15	12	11	9	47
13	4	5	1	2	3	5	2	2	2	2	2	5	2	5	2	5	16	13	14	9	52
14	5	5	5	3	5	5	2	4	1	2	5	1	4	1	5	3	18	12	14	10	54
15	4	4	5	2	1	1	2	2	2	2	2	5	1	5	1	4	14	13	13	9	49
16	4	4	5	1	3	4	1	1	1	1	1	5	2	5	2	4	13	13	11	8	45
17	4	4	5	2	5	4	1	1	1	1	1	1	3	5	3	1	13	13	11	10	47
18	1	1	3	2	5	1	2	2	2	2	1	2	1	2	1	2	14	11	12	11	48
19	1	1	5	3	4	1	3	3	3	3	3	4	1	1	1	1	15	13	14	11	53
20	5	4	5	2	3	1	2	2	2	2	2	4	1	1	1	4	15	12	12	8	47
21	5	1	5	1	5	4	1	1	1	1	1	5	2	1	2	1	14	13	10	9	46
22	5	4	5	1	5	5	1	1	1	1	1	5	1	1	1	5	16	12	10	8	46
23	5	5	1	2	5	5	2	2	2	2	1	2	1	2	5	2	17	12	13	11	53
24	5	1	1	1	4	5	1	1	1	1	1	4	1	1	1	5	16	10	10	7	43
25	1	1	4	2	1	5	2	2	2	2	2	5	1	5	1	5	16	12	13	9	50
26	1	5	5	1	4	1	1	1	1	1	1	1	5	1	1	1	13	12	12	7	44
27	5	5	3	1	5	1	1	1	1	1	1	5	2	1	2	1	14	11	11	9	45
28	4	5	1	1	3	1	1	1	1	1	1	5	1	1	1	4	13	11	11	6	41
29	1	5	1	2	4	1	2	2	2	2	2	1	1	1	1	4	14	11	13	9	47
30	3	3	4	1	4	1	1	1	1	1	1	4	2	1	2	1	12	11	9	8	40
31	4	1	1	1	1	5	1	1	1	1	1	1	1	1	1	1	15	10	10	7	42
32	4	5	5	2	1	4	2	2	2	2	2	5	1	5	1	4	14	13	14	9	50
33	4	5	3	1	3	1	1	1	1	1	1	5	1	5	1	4	13	10	12	8	43
34	1	5	1	1	5	1	1	1	1	1	1	4	1	1	1	1	13	10	11	8	42
35	5	5	1	1	5	4	1	1	1	1	1	4	2	1	2	1	14	11	11	9	45
36	5	3	4	1	1	1	1	1	1	1	1	1	3	1	3	1	14	12	9	9	44
37	5	1	5	2	4	1	2	1	1	2	5	2	1	2	4	2	15	13	12	9	49
38	5	5	1	3	4	5	1	2	3	1	5	1	4	1	5	3	18	13	11	10	52
39	5	1	1	2	5	5	2	2	2	2	1	2	1	2	5	2	17	12	12	11	52
40	1	1	4	1	3	5	2	1	1	1	1	4	3	1	3	5	15	12	12	8	47
41	1	5	5	2	1	5	2	2	2	2	1	2	5	2	5	2	16	13	14	10	53
42	5	5	3	3	1	1	3	3	3	3	4	1	5	1	1	3	16	11	16	11	54
43	4	5	1	2	1	4	2	2	2	2	1	1	1	1	1	2	14	11	13	9	47
44	1	5	1	1	1	1	1	1	1	1	1	1	5	2	4	2	13	12	11	8	44
45	1	3	4	1	5	1	1	1	1	1	5	3	1	3	1	1	13	13	9	10	45
46	1	1	5	2	5	3	2	2	5	2	1	2	1	2	1	2	14	13	12	11	50
47	5	5	4	1	5	5	3	3	3	3	1	1	1	1	5	3	18	12	15	12	57
48	5	1	4	2	1	5	2	2	2	2	2	4	1	1	2	5	17	11	12	9	49
49	5	1	4	1	1	3	1	1	1	1	5	2	5	2	3	2	14	12	11	8	45
50	5	5	5	1	4	1	1	1	1	1	5	1	5	1	1	1	14	12	12	7	45
51	5	5	3	2	5	4	2	2	2	2	1	2	5	2	1	2	15	11	14	11	51
52	4	5	1	1	3	1	1	1	1	1	1	1	1	1	1	4	13	10	11	6	40
53	1	5	4	2	1	1	2	2	2	2	5	1	1	1	1	2	14	12	13	9	48
54	5	1	3	1	1	1	1	1	1	1	5	1	1	1	1	1	14	11	10	7	42
55	5	5	5	1	4	5	1	3	1	1	1	1	4	1	1	5	13	12	11	8	44
56	4	5	3	2	4	5	1	1	1	1	1	4	1	1	1	5	15	9	11	7	42
57	1	3	1	2	4	5	2	2	2	2	4	3	1	1	5	2	16	11	11	9	47
58	4	1	5	1	1	5	1	1	1	1	1	5	2	4	2	5	15	13	10	8	46
59	5	5	1	1	1	5	1	1	1	1	1	5	1	5	1	5	16	11	12	7	46
60	5	4	4	2	5	4	2	2	2	2	1	1	5	1	1	2	15	11	13	10	49
61	5	4	1	1	3	1	1	1	1	1	1	5	1	1	1	1	14	11	10	6	41
62	5	5	5	1	4	1	1	1	1	1	1	5	1	1	1	3	14	12	11	7	44
63	5	2	3	1	1	1	1	1	1	1	1	5	1	1	1	3	14	11	11	8	44
64	4	5	1	1	4	3	1	1	1	1	1	5	1	1	3	1	13	13	11	9	46
65	4	5	4	2	4	5	2	2	2	2	4	2	1	2	5	2	16	12	13	10	51
66	5	3	1	3	5	1	1	3	3	3	1	1	1	1	1	4	16	12	13	12	53
67	4	1	5	2	5	4	2	2	2	2	4	2	4	2	4	2	14	13	12	11	50
68	4	5	1	1	5	5	1	1	1	1	1	1	1	3	1	5	15	12	11	10	48
69	4	1	4	2	1	5	2	2	2	2	5	2	4	2	5	2	16	12	11	10	48
70	4	5	3	3	5	5	1	3	3	3	5	1	4	1	5	3	17	12	15	12	56

TABULASI DATA SKALA PELATIHAN (X2)

S/I	1	2	3	4	5	6	7	8	9	10	11	12	13	14	15	16	F. PL. TI	F. PL. TH	F. PL. III	F. PL. IV	TS. PL. I
71	5	5	4	2	3	5	2	2	2	2	5	1	5	1	5	2	17	12	14	8	51
72	5	5	4	1	4	4	1	1	1	1	5	2	5	2	4	1	14	12	12	8	46
73	5	4	4	1	4	4	1	1	1	1	4	3	4	3	4	1	14	12	10	9	45
74	5	5	5	2	4	4	2	2	2	2	4	2	4	2	4	2	15	13	13	10	51
75	5	5	3	3	4	4	3	3	3	3	4	1	4	1	4	3	16	11	15	11	53
76	4	3	4	2	4	5	2	2	2	2	5	1	4	1	5	2	16	12	11	9	48
77	4	4	5	1	4	5	1	1	1	1	5	2	4	2	5	1	15	13	10	8	46
78	5	5	4	1	4	5	1	1	1	1	4	1	4	1	5	1	16	10	11	7	44
79	4	4	4	2	5	5	2	2	2	2	4	2	5	2	5	2	16	12	13	11	52
80	4	4	4	1	3	4	1	1	1	1	4	1	5	1	4	1	13	10	11	6	40
81	4	5	3	2	4	4	2	2	2	2	5	1	4	1	4	2	14	11	13	9	47
82	4	3	4	1	4	4	1	1	1	1	5	1	4	1	4	1	13	11	9	7	40
83	5	4	5	1	4	4	1	1	1	1	4	2	4	2	4	1	14	12	10	8	44
84	5	5	4	1	4	5	1	1	1	1	4	1	4	1	5	1	16	10	11	7	44
85	5	4	4	2	5	5	2	2	2	2	4	1	4	1	5	2	17	11	12	10	50
86	5	4	4	1	3	5	1	1	1	1	5	2	4	2	5	1	16	12	10	7	45
87	5	5	3	1	5	5	1	1	1	1	5	1	5	1	5	1	16	10	12	8	46
88	4	5	4	2	3	4	2	2	2	2	5	1	5	1	4	2	14	12	14	8	48
89	4	5	4	1	4	4	1	1	1	1	5	1	4	1	4	1	13	11	11	7	42
90	5	4	4	1	4	4	1	1	1	1	4	1	4	1	4	1	14	10	10	7	41
91	4	5	5	1	4	4	1	1	1	1	4	2	4	2	4	1	13	12	11	8	44
92	4	5	3	1	4	5	1	1	1	1	4	3	4	3	5	1	15	11	11	9	46
93	4	3	4	2	4	5	2	2	2	2	5	2	4	2	5	2	16	13	13	11	50
94	4	4	5	3	4	5	3	3	3	3	5	1	4	1	5	3	17	14	14	11	56
95	5	5	4	2	4	5	2	2	2	2	4	2	5	2	5	2	17	12	14	10	53
96	5	4	4	1	5	4	1	1	1	1	4	3	5	3	4	1	14	12	11	10	47
97	5	4	4	2	3	4	2	2	2	2	4	2	4	2	4	2	15	12	12	9	48
98	5	5	3	3	4	4	3	3	3	3	5	1	4	1	4	3	16	12	15	11	54
99	5	3	4	2	4	4	2	2	2	2	5	1	4	1	4	2	15	12	11	9	47
100	4	4	5	1	4	5	1	1	1	1	4	2	4	2	5	1	15	12	10	8	45
101	4	5	4	1	4	5	1	1	1	1	4	3	4	3	5	1	15	12	11	9	47
102	5	4	4	2	5	5	2	2	2	2	4	2	4	2	5	2	17	12	12	11	52
103	4	4	4	3	3	5	3	3	3	3	5	1	5	1	5	3	17	13	15	10	55
104	4	5	3	2	5	4	2	2	2	2	5	1	5	1	4	2	14	11	14	10	49
105	4	5	4	1	3	4	1	1	1	1	5	2	4	2	4	1	13	12	11	7	43
106	4	5	4	1	4	5	1	1	1	1	5	1	4	1	5	1	15	11	11	7	44
107	5	4	4	2	4	5	2	2	2	2	4	2	4	2	5	2	17	12	12	10	51
108	5	5	5	1	4	5	1	1	1	1	4	1	4	1	5	1	16	11	11	7	45
109	5	5	3	2	4	5	2	2	2	2	5	1	5	1	5	2	17	11	14	9	51
110	5	5	4	1	4	4	1	1	1	1	5	1	5	1	4	1	14	11	10	7	42
111	5	4	5	1	4	4	1	1	1	1	4	2	4	2	4	1	14	12	10	8	44
112	4	5	4	1	4	4	1	1	1	1	4	1	4	1	4	1	13	10	11	7	41
113	4	4	4	2	5	5	2	2	2	2	4	1	4	1	5	2	16	11	12	10	49
114	5	4	4	1	3	5	1	1	1	1	5	2	4	2	5	1	16	12	10	7	45
115	4	5	3	1	4	5	1	1	1	1	5	1	4	1	5	1	15	10	11	7	43
116	5	3	4	2	4	5	2	2	2	2	5	1	5	1	5	2	17	12	12	9	50
117	4	4	5	1	4	4	1	1	1	1	5	1	5	1	4	1	13	12	11	7	43
118	4	5	4	1	4	4	1	1	1	1	4	1	4	1	4	1	13	10	11	7	41
119	5	4	4	1	5	4	1	1	1	1	4	2	4	2	4	1	14	11	10	9	44
120	4	4	4	1	3	5	1	1	1	1	5	3	4	3	5	1	15	13	10	8	46
121	4	5	3	2	4	5	2	2	2	2	5	2	4	2	5	2	16	12	13	10	51
122	4	3	4	3	4	5	3	3	3	3	4	1	4	1	5	3	17	12	13	11	53
123	5	4	5	2	4	5	2	2	2	2	4	2	5	2	5	2	17	13	13	10	53
124	4	5	4	1	4	4	1	1	1	1	4	3	5	3	4	1	13	12	12	9	46
125	4	4	4	2	5	4	2	2	2	2	5	2	4	2	4	2	14	13	12	11	50
126	4	4	4	3	3	4	3	3	3	3	5	1	4	1	4	3	15	13	14	10	52
127	4	4	4	2	4	5	2	2	2	2	5	1	4	1	5	2	16	12	12	9	49
128	5	5	5	1	4	5	1	1	1	1	5	2	4	2	5	1	16	13	11	8	48
129	5	5	3	1	4	5	1	1	1	1	4	3	4	3	5	1	16	11	11	9	47
130	5	3	4	2	4	5	2	2	2	2	4	2	5	2	5	2	17	12	12	10	51
131	5	4	5	3	4	4	3	3	3	3	5	1	5	1	4	3	16	14	15	11	56
132	5	5	4	2	4	4	2	2	2	2	5	1	4	1	4	2	15	13	13	9	49
133	4	4	4	1	5	4	1	1	1	1	4	2	4	2	4	1	13	11	10	9	46
134	4	4	4	1	3	5	1	1	1	1	4	1	4	1	5	1	15	10	10	6	41
135	3	5	3	2	4	5	2	2	2	2	4	2	4	2	5	2	15	11	13	10	49
136	3	5	4	1	4	5	1	1	1	1	5	1	4	1	5	1	14	11	9	7	41
137	3	4	5	2	4	5	2	2	2	2	5	1	5	1	5	2	15	13	13	9	50
138	5	5	4	1	4	5	1	1	1	1	5	1	5	1	4	1	14	12	10	9	48
139	5	5	4	1	5	5	1	1	1	1	5	2	4	2	4	1	12	10	10	6	38
140	3	5	4	1	3	5	1	1	1	1	4	1	4	1	4	1	15	10	13	6	27
141	3	5	3	2	4	5	2	2	2	2	4	1	4	1	5	2	15	10	13	6	27
142	5	5	4	1	4	5	1	1	1	1	5	2	4	2	5	1	16	12	10	8	45
143	5	5	3	1	4	5	1	1	1	1	5	1	4	1	5	1	16	12	10	7	45

TABULASI DATA SKALA PELATIHAN(X2)

S:1	2	3	4	5	6	7	8	9	10	11	12	13	14	15	16	F_PLTI	F_PLTII	F_PLTIII	F_PLTIV	TS_PLT	
144	5	5	4	2	1	5	2	2	2	2	4	3	5	7	5	2	17	11	14	9	51
145	3	4	3	1	8	1	1	1	1	1	1	1	3	1	4	1	12	10	11	8	41
146	3	4	3	3	3	8	1	4	1	3	4	3	4	3	5	1	14	16	10	6	40
147	5	5	3	1	4	5	1	1	1	1	1	5	2	3	2	5	1	11	12	8	47
148	5	3	4	1	4	1	1	1	1	1	1	5	3	5	3	1	14	13	10	9	46
149	3	4	5	2	3	4	2	2	2	2	8	2	1	2	4	2	14	14	12	10	50
150	3	5	4	3	1	4	3	3	3	3	5	1	4	1	4	3	15	13	15	11	54
151	3	4	4	2	5	5	2	2	2	2	1	2	1	2	5	2	15	12	12	11	50
152	3	3	1	1	3	5	1	1	1	1	4	3	4	3	5	1	14	12	10	8	44
153	3	5	3	2	4	5	2	2	2	2	3	2	3	2	5	2	15	11	13	10	49
154	5	3	4	3	1	5	3	3	3	3	1	1	5	1	5	3	18	12	14	11	55
155	5	3	5	2	3	1	2	2	2	2	8	1	5	1	3	2	15	13	13	9	50
156	3	5	4	1	4	5	1	1	1	1	5	2	1	2	5	1	14	12	11	8	45
157	3	4	4	1	5	5	1	1	1	1	8	3	5	3	5	1	14	13	11	10	48
158	4	1	3	2	3	4	2	2	2	2	5	2	5	2	1	2	14	13	13	9	49
159	4	5	3	3	1	4	3	3	3	3	1	1	1	1	4	3	15	11	15	11	52
160	3	3	4	2	1	3	2	2	2	2	4	1	4	1	1	2	14	11	11	9	45
161	5	4	5	1	1	5	1	1	1	1	1	2	1	2	5	1	16	12	10	8	46
162	5	5	4	1	3	5	1	1	1	1	1	1	1	1	5	1	16	10	11	7	44
163	5	4	1	2	5	5	2	2	2	2	5	2	1	2	5	2	17	13	12	11	53
164	5	3	3	1	3	5	1	1	1	1	5	1	5	1	5	1	16	11	11	6	44
165	5	5	3	2	4	4	2	2	2	2	5	1	5	1	4	2	18	11	14	9	49
166	3	3	4	1	1	1	1	1	1	1	5	1	3	1	4	1	13	11	9	7	40
167	4	4	5	1	4	5	1	1	1	1	1	1	1	2	5	1	15	12	10	7	44
168	5	5	4	1	4	5	1	1	1	1	1	1	1	2	5	1	16	10	11	8	45
169	4	4	5	2	5	5	2	2	2	2	1	1	4	1	5	2	16	11	12	10	49
170	5	4	1	1	2	5	1	1	1	1	1	1	3	2	5	1	18	10	11	6	43
171	4	5	3	1	1	4	1	1	1	1	1	1	5	1	5	1	15	10	12	7	42
172	4	3	4	1	1	5	1	1	1	1	1	1	1	1	5	1	18	12	9	7	43
173	3	4	5	1	4	5	1	1	1	1	5	2	5	3	5	1	15	14	11	8	48
174	4	5	4	2	1	4	2	2	2	2	5	3	5	2	4	2	14	13	14	11	52
175	1	4	1	3	5	1	3	3	3	3	1	2	3	1	4	3	15	12	14	13	54
176	5	4	1	2	3	4	2	2	2	2	4	1	1	2	4	2	15	12	12	8	47
177	5	5	3	1	1	5	1	1	1	1	4	2	4	3	5	1	16	11	11	8	46
178	5	4	1	2	3	1	2	2	2	2	1	3	4	2	1	2	18	12	11	11	49
179	5	1	5	3	1	5	3	3	3	5	2	1	1	5	3	18	14	14	12	58	
180	5	5	3	2	1	5	2	2	2	2	5	1	4	1	5	2	17	12	13	9	51
181	4	1	3	1	5	5	1	1	1	1	5	1	4	2	5	1	15	12	10	8	45
182	4	4	3	3	3	5	1	1	1	1	5	2	5	3	5	1	15	13	11	7	46
183	5	5	4	2	3	1	2	2	2	2	4	3	5	2	1	2	15	12	14	10	51
184	4	5	3	3	4	5	3	3	3	3	1	2	4	1	5	3	17	12	15	12	56
185	5	4	1	2	4	5	2	2	2	2	4	1	5	1	5	2	17	11	13	9	50
186	4	5	5	1	4	4	1	1	1	1	4	1	5	2	4	1	13	12	12	7	44
187	4	5	3	1	4	4	1	1	1	1	5	2	4	1	1	1	15	10	11	8	42
188	3	3	4	2	1	4	2	2	2	2	5	1	1	2	4	2	14	13	11	9	47
189	1	4	5	1	1	5	1	1	1	1	4	2	4	1	5	1	18	12	10	8	45
190	4	5	4	2	1	4	2	2	2	2	5	1	3	1	1	2	14	12	13	9	48
191	5	1	3	1	5	5	1	1	1	1	4	1	1	2	5	1	16	11	10	8	45
192	5	1	4	1	3	5	1	1	1	1	4	1	4	1	5	1	16	10	10	6	42
193	5	5	3	2	4	5	2	2	2	2	1	1	1	1	5	2	17	10	13	9	49
194	5	3	4	1	4	5	1	1	1	1	1	2	5	1	5	1	16	10	10	8	44
195	5	3	5	1	1	4	1	1	1	1	1	5	1	5	1	1	14	12	11	7	44
196	4	5	4	1	4	5	1	1	1	1	5	1	4	2	5	1	15	12	11	7	45
197	4	1	1	1	5	5	1	1	1	1	5	1	5	3	5	1	15	13	11	8	47
198	5	4	1	2	3	4	2	2	2	2	5	1	5	2	4	2	18	13	13	8	49
199	4	5	3	3	1	4	3	3	3	3	4	2	4	1	4	3	18	11	15	12	53
200	3	3	4	2	1	1	2	2	2	2	4	3	3	2	1	2	15	12	11	11	49
201	4	4	5	1	4	5	1	1	1	1	4	2	4	3	5	1	15	13	10	8	46
202	4	5	4	2	4	4	2	2	2	2	5	1	4	2	1	2	14	13	13	9	49
203	4	4	1	3	5	5	3	3	3	3	5	2	1	1	5	3	17	13	14	13	57
204	4	4	4	2	3	5	2	2	2	2	5	3	1	1	5	2	16	12	12	10	50
205	4	4	1	1	5	1	1	1	1	1	5	2	1	2	5	1	15	12	10	8	45
206	5	5	5	1	1	5	1	1	1	1	1	1	1	1	5	1	16	13	12	7	48
207	5	5	3	2	3	1	2	2	2	2	4	1	5	2	3	2	15	11	14	9	49
208	5	3	4	3	4	5	3	3	3	3	4	2	3	1	5	3	18	12	13	12	55
209	5	4	5	2	4	5	2	2	2	2	4	3	5	3	5	2	17	12	13	11	53
210	5	5	1	1	4	4	1	1	1	1	1	5	2	5	2	4	14	12	12	8	46
211	4	4	4	1	5	4	1	1	1	1	5	1	4	1	4	1	13	11	10	7	42
212	4	4	4	2	3	4	2	2	2	2	4	1	1	2	4	2	14	12	12	8	46
213	5	4	1	1	3	5	1	1	1	1	4	2	1	2	4	2	16	11	10	7	44
214	3	3	4	2	1	1	2	2	2	2	5	2	1	1	4	2	14	12	10	7	44
215	5	4	5	1	4	5	1	1	1	1	5	2	4	1	5	1	16	12	10	9	46
216	4	5	4	1	1	5	1	1	1	1	5	1	4	1	5	1	15	11	10	8	46

TABULASI DATA SKALA PELATIHAN (X2)

S/I	1	2	3	4	5	6	7	8	9	10	11	12	13	14	15	16	F PLTI	F PLTH	F PLFIII	F PLFIV	TS PLI
217	4	4	4	1	3	5	1	1	1	1	5	1	1	1	5	1	15	11	10	6	42
218	4	3	4	1	4	5	1	1	1	1	4	1	5	2	5	1	15	11	10	7	43
219	4	4	5	2	4	4	2	2	2	2	4	1	5	3	4	2	14	14	13	9	50
220	4	5	4	3	4	5	3	3	3	3	4	2	4	2	5	3	17	13	15	12	57
221	5	4	4	2	3	5	2	2	2	2	4	1	5	1	5	2	17	11	13	8	49
222	5	3	4	1	4	4	1	1	1	1	5	1	5	2	4	1	14	12	10	7	43
223	5	4	5	2	4	4	2	2	2	2	5	1	4	3	4	2	15	15	12	9	51
224	5	5	4	3	4	4	3	3	3	3	4	1	4	2	4	3	16	13	15	11	55
225	5	5	4	2	4	5	2	2	2	2	4	2	4	1	5	2	17	11	13	10	51
226	4	4	4	1	4	5	1	1	1	1	5	3	4	1	5	1	15	11	10	9	45
227	4	5	5	1	4	5	1	1	1	1	5	2	4	2	5	1	15	13	11	8	47
228	5	5	3	2	4	5	2	2	2	2	5	1	5	3	5	2	17	13	14	9	53
229	4	3	4	3	4	4	3	3	3	3	5	2	5	2	4	3	15	14	14	12	55
230	5	4	5	2	4	5	2	2	2	2	4	3	4	1	5	2	17	12	12	11	52
231	4	5	4	1	4	5	1	1	1	1	4	2	5	1	5	1	15	10	12	8	45
232	4	4	4	1	5	4	1	1	1	1	4	1	5	2	4	1	13	11	11	8	43
233	4	4	4	2	3	4	2	2	2	2	4	1	4	1	4	2	14	11	12	8	45
234	5	4	4	1	5	4	1	1	1	1	5	2	4	2	4	1	14	12	10	9	45
235	5	4	4	2	3	5	2	2	2	2	5	3	4	1	5	2	17	12	12	10	51
236	5	3	4	1	4	4	1	1	1	1	4	2	4	1	4	1	14	10	9	8	41
237	5	4	5	1	4	5	1	1	1	1	4	1	4	2	5	1	16	12	10	7	45
238	5	5	4	2	4	5	2	2	2	2	5	1	4	1	5	2	17	12	13	9	51
239	4	4	4	1	5	5	1	1	1	1	5	2	4	2	5	1	15	12	10	9	46
240	4	4	4	2	3	5	2	2	2	2	5	1	5	1	5	2	16	12	13	8	49
241	5	4	4	1	3	4	1	1	1	1	5	2	5	1	4	1	14	11	11	7	43
242	4	3	4	1	4	5	1	1	1	1	4	1	4	3	5	1	15	12	9	7	43
243	5	4	5	3	4	5	3	3	3	3	4	1	5	2	5	3	18	14	15	11	58
244	4	5	4	2	4	4	2	2	2	2	4	1	5	1	4	2	14	11	14	9	48
245	4	4	4	1	3	4	1	1	1	1	4	1	4	1	4	1	13	10	10	6	39
246	4	3	4	1	4	4	1	1	1	1	5	2	4	2	4	1	13	12	9	8	42
247	5	4	5	2	4	5	2	2	2	2	5	1	4	1	5	2	17	13	12	9	51
248	5	5	4	1	4	5	1	1	1	1	4	1	4	2	5	1	16	11	11	7	45
249	5	5	4	2	4	5	2	2	2	2	4	1	5	1	5	2	17	11	14	9	51
250	5	4	4	1	4	4	1	1	1	1	5	1	5	1	4	1	14	11	11	7	43
251	5	5	5	1	4	5	1	1	1	1	5	2	4	2	5	1	16	13	11	8	48
252	4	5	3	2	4	5	2	2	2	2	5	3	5	1	5	2	16	11	14	11	52
253	4	3	4	1	4	4	1	1	1	1	5	2	5	2	4	1	13	12	10	8	43
254	5	4	5	2	4	4	2	2	2	2	4	1	4	1	4	2	15	12	12	9	48
255	4	5	4	1	4	4	1	1	1	1	4	2	4	1	4	1	13	10	11	8	42
256	5	4	4	1	5	5	1	1	1	1	4	3	4	3	5	1	16	12	10	10	48
257	4	4	4	3	3	4	3	3	3	3	4	2	4	2	4	3	15	13	14	11	53
258	4	5	3	2	4	5	2	2	2	2	5	1	4	1	5	2	16	11	13	9	49
259	4	3	4	1	4	5	1	1	1	1	5	1	4	1	5	1	15	11	9	7	42
260	5	4	5	1	4	5	1	1	1	1	5	2	4	2	5	1	16	13	10	8	47
261	5	5	4	2	4	5	2	2	2	2	4	3	5	1	5	3	17	11	14	11	53
262	5	4	4	1	5	4	1	1	1	1	4	2	5	2	4	1	14	11	11	9	45
263	5	4	4	2	3	5	2	2	2	2	4	1	4	1	5	2	17	11	12	8	48
264	5	5	4	1	4	5	1	1	1	1	4	1	5	1	5	1	16	10	12	7	45
265	4	4	4	1	4	4	1	1	1	1	5	2	5	2	4	1	13	12	11	8	44
266	4	5	5	2	4	4	2	2	2	2	5	1	4	1	4	2	14	13	13	9	49
267	5	5	3	1	4	4	1	1	1	1	5	2	4	2	4	1	14	11	11	8	44
268	4	3	4	2	4	5	2	2	2	2	4	1	4	1	5	2	16	11	11	9	47
269	5	4	5	1	4	5	1	1	1	1	4	1	4	1	5	1	16	11	10	7	44
270	4	5	4	1	4	5	1	1	1	1	4	1	5	1	5	1	15	10	12	7	44
271	4	4	4	1	5	4	1	1	1	1	4	1	5	1	4	1	13	10	11	8	42
272	4	4	4	1	3	5	1	1	1	1	5	2	4	3	5	1	15	13	10	7	43
273	1	5	3	3	4	5	3	3	3	3	5	1	5	2	5	3	18	13	16	11	58
274	5	3	4	2	4	4	2	2	2	2	4	1	5	1	4	2	15	11	12	9	47
275	5	4	5	1	4	4	1	1	1	1	5	1	4	1	4	1	14	12	10	7	43
276	5	5	4	1	4	4	1	1	1	1	5	1	4	2	4	1	14	12	11	7	44
277	5	4	4	2	5	5	2	2	2	2	5	2	4	1	5	2	17	12	12	11	52
278	4	4	4	1	3	4	1	1	1	1	4	3	4	2	4	1	13	11	10	8	42
279	4	4	4	1	3	4	1	1	1	1	4	3	4	2	4	1	16	10	13	10	49
280	5	3	4	1	4	5	1	1	1	1	4	1	4	1	5	1	15	12	9	7	43
281	4	4	5	1	4	5	1	1	1	1	4	2	4	2	5	1	15	12	10	8	45
282	5	5	4	2	4	5	2	2	2	2	4	3	5	1	5	2	17	11	14	11	53
283	4	4	4	1	5	4	1	1	1	1	4	2	5	2	4	1	13	11	11	9	47
284	4	4	4	2	3	5	2	2	2	2	4	1	4	1	5	2	16	11	12	8	46
285	4	5	5	1	4	5	1	1	1	1	5	1	5	1	5	1	15	10	12	8	44
286	5	5	3	1	4	4	1	1	1	1	5	2	5	1	4	1	14	13	12	13	56
287	5	3	4	3	4	4	3	3	3	3	5	3	4	2	4	3	16	14	13	10	49
288	5	4	5	2	4	4	2	2	2	2	4	2	4	1	4	2	15	12	12	7	46
289	5	5	4	1	4	5	1	1	1	1	4	1	5	2	5	1	16	11	12		

TABULASI DATA SKALA PELATIHAN(X2)

S/I	1	2	3	4	5	6	7	8	9	10	11	12	13	14	15	16	F_PUJI	F_PUJIH	F_PUJIIH	F_PUJIIIH	F_PUJIV	TS_PLT
290	5	4	4	1	5	4	1	1	1	1	4	1	5	1	4	1	14	10	11	11	8	43
291	4	4	4	2	3	5	2	2	2	2	4	2	4	3	5	2	16	11	12	12	9	48
292	4	4	5	1	4	5	1	1	1	1	5	1	5	1	5	1	15	12	11	11	7	45
293	5	5	4	2	4	4	2	2	2	2	4	1	5	1	4	2	15	11	14	14	10	50
294	4	4	4	1	5	1	1	1	1	1	4	1	4	1	4	1	13	10	11	11	8	42
295	5	4	4	1	3	4	1	2	1	1	5	1	5	1	4	1	14	11	11	11	7	43
296	4	4	5	2	4	4	2	2	2	2	5	1	4	1	4	2	14	13	12	12	9	48

TABULASI DATA SKALA PENEMPATAN(X3)

S/I	1	2	3	4	5	6	7	8	9	10	11	12	13	14	15	16	17	18	19	20	21	22	23	24	F_PNI	F_PNII	F_PNIII	TS_PN	
1	1	5	1	5	3	4	5	1	3	1	1	1	5	1	3	1	1	1	5	1	5	3	3	23	22	23	68		
2	2	5	1	5	2	5	3	2	3	1	5	1	1	2	1	1	5	1	2	5	1	5	2	5	25	24	25	74	
3	1	1	2	2	1	1	1	3	1	1	5	1	3	3	4	1	5	1	1	1	2	4	1	4	24	23	21	68	
4	1	5	3	5	1	1	1	2	5	2	4	3	1	2	5	7	4	3	1	5	3	5	1	4	26	28	24	78	
5	2	5	2	5	2	5	3	1	5	1	5	2	3	1	5	1	5	2	2	5	2	5	2	5	24	26	26	76	
6	1	1	1	4	3	4	1	1	1	1	5	1	3	1	4	1	5	1	1	4	1	4	3	4	21	22	23	66	
7	2	1	2	5	2	4	5	2	5	1	1	1	5	2	5	1	4	1	2	4	2	5	2	4	24	27	23	74	
8	1	3	3	5	1	3	4	1	5	1	1	2	1	1	5	1	4	2	1	1	3	5	1	4	22	26	22	70	
9	2	4	2	5	2	4	5	2	5	1	1	1	5	2	5	1	3	1	2	1	2	5	2	4	24	27	23	74	
10	1	4	3	5	3	1	1	1	5	1	1	2	1	1	5	1	4	2	1	1	3	5	1	4	22	26	22	70	
11	1	4	2	4	1	1	1	2	1	1	5	1	1	3	1	1	5	1	1	1	2	4	1	4	24	23	21	68	
12	1	5	3	5	1	4	1	2	5	2	4	3	4	2	5	2	1	3	1	5	3	5	1	4	26	28	24	78	
13	2	5	2	5	2	5	3	1	5	1	5	2	3	1	5	1	5	2	2	5	2	5	2	5	24	26	26	76	
14	1	1	1	1	3	1	1	1	1	1	5	1	4	1	1	1	5	1	1	4	1	4	3	4	21	22	23	66	
15	2	4	2	5	2	4	5	2	5	1	1	1	5	2	5	1	1	1	2	4	2	5	2	4	24	27	23	74	
16	1	1	3	5	1	1	3	1	5	1	4	2	1	1	5	1	4	2	1	1	3	5	1	4	22	26	22	70	
17	2	1	3	4	2	3	5	1	3	3	5	3	5	1	3	3	5	3	2	1	3	4	2	4	27	23	28	78	
18	3	1	2	2	1	1	3	2	4	2	3	2	3	2	4	2	1	2	3	1	2	5	1	4	24	25	23	72	
19	1	5	1	5	3	1	5	1	3	1	1	1	5	1	3	1	1	1	1	5	1	5	3	4	23	22	23	68	
20	2	5	1	5	2	5	1	2	1	1	5	1	1	2	1	1	5	1	2	5	1	5	2	5	25	24	25	74	
21	1	1	2	1	1	1	1	3	1	1	5	1	4	3	4	1	5	1	1	4	2	1	1	4	24	23	21	68	
22	1	5	3	5	1	3	4	2	5	2	4	3	1	2	5	2	1	3	1	5	3	5	1	4	26	28	24	78	
23	2	5	2	5	2	5	3	1	5	1	5	2	3	1	5	1	5	2	2	5	2	5	2	5	24	26	26	76	
24	1	1	1	4	3	4	1	1	1	1	5	1	1	1	1	1	5	1	1	4	1	4	3	4	21	22	23	66	
25	2	1	2	5	2	1	5	2	5	1	1	1	5	2	5	1	1	1	2	1	2	5	2	4	24	27	23	74	
26	1	4	3	5	1	1	1	1	5	1	4	2	1	1	5	1	1	2	1	1	3	5	1	4	22	26	23	70	
27	1	4	2	5	1	1	3	1	5	2	4	2	3	1	5	2	1	2	1	1	1	2	5	1	4	21	26	21	68
28	2	4	1	5	1	5	3	1	5	1	4	1	1	1	5	1	1	1	2	1	1	5	1	5	21	24	23	68	
29	1	1	1	5	2	4	4	2	3	1	1	1	1	2	3	1	4	1	1	1	1	5	2	4	21	22	21	64	
30	1	4	2	5	1	3	4	3	2	3	2	4	1	3	2	4	1	3	2	1	3	2	5	1	3	22	24	20	66
31	2	4	1	5	1	5	4	1	1	1	3	1	4	1	1	1	4	1	2	1	1	5	1	5	21	22	23	66	
32	1	4	1	4	1	3	5	2	5	1	5	1	5	2	5	1	5	1	1	4	1	4	1	3	23	23	23	66	
33	1	1	1	4	1	1	2	1	5	1	5	1	3	1	5	1	5	1	1	4	1	4	1	4	20	22	20	62	
34	1	1	1	5	2	4	1	1	3	3	4	1	1	1	3	1	4	1	2	1	4	3	5	2	4	20	21	21	62
35	1	1	2	5	3	5	1	1	4	2	1	2	1	1	4	2	1	2	1	1	2	5	3	5	22	26	26	74	
36	2	4	3	5	2	1	1	1	3	4	3	4	3	1	3	1	3	1	3	2	1	3	5	2	4	25	27	26	78
37	3	1	2	5	3	5	2	5	2	1	2	5	2	5	2	4	2	3	1	2	5	1	3	26	27	23	76		
38	2	1	1	5	2	5	1	3	5	1	1	1	1	3	5	1	1	1	2	4	1	5	2	5	23	27	24	74	
39	1	5	2	5	3	5	4	2	3	2	4	2	1	2	3	2	1	2	1	5	2	5	3	5	25	25	26	76	
40	2	5	3	5	2	1	1	1	1	3	4	3	4	1	4	3	1	3	2	5	3	5	2	4	27	27	26	80	
41	3	5	2	5	1	5	5	2	4	2	5	2	5	2	1	2	5	2	3	5	2	5	1	5	29	25	28	82	
42	2	4	1	4	1	4	3	3	1	1	5	1	3	3	4	1	5	1	2	4	1	4	1	4	23	22	21	66	
43	1	1	1	5	2	1	1	2	1	1	3	1	1	2	1	1	1	1	1	4	1	5	2	4	21	24	21	66	
44	1	1	2	5	3	5	1	1	5	2	1	2	1	1	5	2	1	2	1	4	2	5	3	5	22	28	26	76	
45	2	4	3	5	2	1	1	1	5	3	1	3	1	1	5	3	4	3	2	4	3	5	2	4	25	29	26	80	
46	3	1	2	5	1	3	5	2	3	2	1	2	5	2	3	2	1	2	3	4	2	5	1	3	26	23	23	72	
47	2	4	1	5	1	5	1	3	1	1	1	1	1	3	4	1	4	1	2	4	1	5	1	5	23	24	23	70	
48	1	3	1	1	2	3	4	2	4	1	1	1	4	2	1	1	4	1	1	3	1	4	2	3	19	22	19	60	
49	1	5	3	4	3	3	4	1	5	2	5	2	1	1	5	2	5	2	1	5	3	4	3	3	26	27	23	76	
50	2	4	1	4	2	3	5	1	5	1	5	1	5	1	5	1	2	4	1	4	2	3	3	3	23	23	22	68	

TAHLASI DATA SKALA PENEMPATAN (X3)

S	1	2	3	4	5	6	7	8	9	10	11	12	13	14	15	16	17	18	19	20	21	22	23	24	F_PNI	F_PNII	F_PNIII	TS_PN		
124	2	4	1	1	2	1	1	1	2	3	5	3	3	1	4	3	5	3	2	1	1	1	2	4	24	23	27	74		
125	3	1	2	5	1	4	1	2	5	2	1	2	1	2	5	2	1	2	3	4	2	5	1	4	25	27	24	76		
126	2	4	3	5	1	1	1	3	5	1	4	1	1	3	5	1	4	1	2	1	3	5	1	4	25	28	21	74		
127	1	4	2	5	1	5	4	2	5	1	1	1	4	2	5	1	1	1	1	1	2	5	1	5	22	26	22	70		
128	1	5	1	5	1	5	5	1	5	2	1	2	5	1	5	2	1	2	1	5	1	5	1	5	24	25	25	74		
129	2	5	1	5	2	4	3	1	3	3	4	3	3	1	3	3	4	3	7	5	1	5	2	4	24	23	25	72		
130	3	5	2	5	3	5	1	2	1	2	5	2	1	2	1	2	4	2	3	5	2	5	3	5	28	27	29	84		
131	2	1	3	1	2	1	5	3	5	1	5	1	5	5	5	1	5	1	2	4	3	4	2	4	27	27	24	78		
132	1	3	2	5	1	4	1	2	5	1	4	1	1	2	5	1	1	1	1	1	2	5	1	4	22	26	20	68		
133	1	4	1	5	1	1	1	1	3	2	1	1	3	2	4	2	1	1	1	5	1	4	1	4	21	21	22	64		
134	2	4	1	5	2	5	4	1	3	1	3	1	4	1	4	1	3	1	2	1	3	5	2	5	21	23	24	68		
135	1	5	2	5	3	5	3	2	4	2	3	2	1	2	4	2	3	2	1	5	2	5	3	5	24	27	25	76		
136	2	5	3	5	2	4	1	1	5	1	1	1	4	1	5	1	1	1	2	5	3	5	2	4	25	27	22	74		
137	1	5	2	5	1	5	5	2	5	1	5	1	5	2	5	1	5	1	1	5	2	5	1	5	26	26	24	76		
138	1	1	1	1	1	1	1	1	5	1	5	1	4	1	5	1	5	1	1	4	1	4	1	4	21	22	21	64		
139	1	3	2	5	3	1	1	1	5	2	1	2	1	1	5	2	4	2	1	1	2	5	3	4	22	28	24	74		
140	2	1	3	5	2	4	1	1	3	1	1	1	1	3	1	1	1	2	4	2	5	2	1	23	23	22	68			
141	1	4	2	5	1	5	3	2	1	1	1	3	2	1	4	1	1	2	2	5	1	5	1	5	21	24	21	66		
142	1	5	1	5	2	5	1	1	5	2	4	2	1	1	5	2	4	2	1	5	1	5	2	5	23	26	25	74		
143	2	5	2	3	3	1	5	1	5	1	1	5	1	5	1	1	1	1	2	5	2	5	3	4	25	27	24	76		
144	1	5	2	5	2	5	1	2	3	1	5	1	1	2	3	1	5	1	1	5	1	5	2	5	24	22	24	70		
145	1	1	1	1	1	1	4	1	4	1	5	1	4	1	1	1	5	1	1	1	1	1	1	4	21	20	21	62		
146	1	5	1	5	1	4	1	1	1	1	1	1	1	1	1	1	1	1	1	5	1	5	1	4	22	22	20	64		
147	1	5	2	5	2	5	3	1	5	2	5	2	3	1	5	2	5	2	1	5	1	5	2	5	23	26	25	74		
148	2	1	2	1	3	1	1	1	5	3	5	3	4	1	5	3	5	3	2	1	2	1	3	4	25	27	28	80		
149	3	4	2	5	2	1	5	2	5	2	4	2	5	2	5	2	4	2	3	3	5	2	4	27	29	26	82			
150	2	4	2	5	1	1	4	3	5	1	1	1	3	5	1	4	1	2	1	2	5	1	4	24	27	21	72			
151	1	4	1	5	1	5	2	3	2	3	2	1	2	3	2	4	2	1	4	1	5	1	5	22	22	24	68			
152	2	5	2	5	2	5	1	1	3	3	4	3	1	1	3	3	4	3	2	5	2	5	2	5	26	24	28	78		
153	3	5	3	5	3	1	3	2	4	2	1	2	3	2	4	2	3	2	3	5	3	5	3	4	27	28	25	80		
154	2	5	2	5	2	5	1	3	1	1	5	1	4	3	4	1	5	1	7	5	2	5	2	5	27	26	25	78		
155	1	4	1	4	1	4	5	2	5	1	5	1	5	2	5	1	5	1	1	1	1	1	1	4	23	23	22	68		
156	1	5	1	5	1	1	1	5	2	1	2	4	1	5	2	1	2	1	5	1	5	1	4	23	25	22	70			
157	2	5	2	5	2	5	4	1	5	3	5	3	4	1	5	3	5	3	2	5	2	5	2	5	27	28	29	84		
158	3	4	3	1	3	1	1	2	5	2	1	2	5	2	5	2	5	2	3	1	3	4	3	4	27	28	27	82		
159	2	1	2	5	2	4	3	3	3	1	1	1	3	3	3	1	4	1	2	1	2	5	2	4	23	24	21	68		
160	1	4	1	5	1	4	4	2	3	3	4	1	4	2	3	1	4	3	1	4	3	5	1	4	21	21	20	62		
161	1	4	1	5	1	5	5	4	1	2	1	2	5	1	4	2	4	2	1	1	1	5	1	5	22	23	25	70		
162	2	5	2	5	2	5	4	1	1	1	4	1	1	1	1	1	1	1	2	5	2	5	2	5	24	24	24	72		
163	1	5	1	5	1	1	4	2	5	2	1	2	4	2	5	2	4	2	1	5	1	5	1	4	24	26	22	72		
164	2	5	2	5	1	5	1	1	5	1	1	1	5	1	5	1	5	1	2	5	2	5	1	5	25	25	24	74		
165	1	4	1	4	2	1	3	2	5	1	5	1	3	2	5	1	5	1	1	4	1	1	2	4	21	24	21	66		
166	1	1	1	5	3	1	1	1	5	1	4	1	1	1	1	1	5	1	4	2	1	1	5	3	4	20	26	22	68	
167	1	4	1	5	2	5	5	1	3	1	4	1	2	5	1	3	1	1	2	1	4	1	5	2	5	21	21	26	68	
168	2	5	2	5	3	5	1	1	3	2	3	1	1	1	3	2	4	1	2	5	2	5	1	5	25	22	22	70		
169	1	5	1	5	1	1	4	2	3	1	4	1	2	2	1	4	1	1	5	1	5	1	4	23	23	23	66			
170	1	5	1	5	2	5	1	1	4	1	3	1	1	1	1	1	5	1	1	5	1	5	2	5	23	23	24	70		
171	1	4	2	1	3	1	3	1	5	1	5	1	3	1	5	1	5	1	1	1	7	4	3	1	21	25	22	68		
172	1	5	1	5	2	4	1	2	5	1	1	2	1	2	5	1	4	2	1	5	1	5	2	4	23	26	23	72		
173	2	5	1	5	1	5	5	1	5	2	5	3	3	1	5	2	5	3	2	5	1	5	1	5	26	25	29	80		
174	3	4	1	4	1	1	3	1	5	3	5	2	4	1	5	3	5	2	3	4	1	1	1	4	25	24	25	74		
175	2	1	1	5	1	3	4	1	3	2	1	1	4	1	3	2	4	1	2	1	1	5	1	4	22	21	21	64		
176	1	1	2	5	1	4	1	1	3	1	4	1	2	1	1	3	4	1	2	1	1	2	5	1	4	21	21	22	64	
177	2	4	3	5	2	5	3	2	4	2	4	3	3	2	4	2	1	3	2	4	2	5	2	5	24	27	27	78		
178	1	5	1	5	3	1	5	1	3	1	4	1	5	1	3	1	4	1	1	5	1	5	3	4	23	22	23	68		
179	2	5	1	5	2	5	4	2	4	1	5	1	2	4	1	5	1	2	5	1	5	2	5	25	25	24	25	74		
180	1	4	2	4	1	4	1	3	1	1	5	1	4	3	1	1	5	1	1	4	2	4	1	4	24	23	21	68		
181	1	5	3	5	1	1	1	2	5	2	5	3	4	2	5	2	1	3	1	3	1	5	3	5	1	4	26	28	24	78
182	2	5	2	5	2	5	3	1	5	4	5	2	3	1	5	1	5	2	2	5	2	5	2	5	24	26	26	76		
183	1	4	1	2	2	4	1	1	1	1	5	1	1	1	1	1	5	1	1	4	1	4	3	4	21	22	23	66		
184	2	4	2	5	2	5	2	5	2	5	2	1	2	1	3	5	1	4	2	1	4	3	5	1	4	22	26	22	70	
185	1	4	3	5	1	1	1	1	5	1	1	1	5	2	5	1	1	2	1	2	5	2	4	24	27	23	74			
186	3	3	4	1	1	5	2	1	1	5	2	5	2	3	1	5	2	1	4	3	5	1	4	22	26	22	70			
187	2	4	2	5	3	1	3	3	5	2	4	1	3	3	5	2	4	1	2	4	2	5	3	4	25	23	24	72		
188	3	4	2	5	2	1	4	2	5	1	1	2	4	2	5	1	4	2	1	4	2	5	2	4	22	27	23	76		

TABULASI DATA SKALA PENEMPATAN (X3)

S/I	1	2	3	4	5	6	7	8	9	10	11	12	13	14	15	16	17	18	19	20	21	22	23	24	F PNI	F PNI	F PNI	IS IN	
193	1	5	1	5	1	4	3	2	4	1	4	1	3	2	1	4	1	1	5	1	5	1	1	1	22	23	19	64	
194	1	5	1	5	1	5	4	1	4	2	5	1	4	1	4	2	5	1	1	5	1	5	1	5	24	23	23	70	
195	1	4	2	4	2	4	5	1	5	1	5	1	5	1	5	1	5	1	1	4	2	4	2	4	23	24	23	70	
196	1	5	3	5	3	4	4	1	5	1	4	2	4	1	5	1	4	2	1	5	3	5	3	4	24	28	24	76	
197	2	5	2	5	2	5	4	2	5	1	5	3	4	2	5	1	5	3	2	5	2	5	2	5	26	27	29	82	
198	3	4	1	4	1	4	4	1	5	1	5	2	4	1	5	1	5	2	3	4	1	4	1	4	23	22	25	70	
199	2	4	1	5	1	4	3	1	3	2	4	1	3	1	3	2	4	1	2	4	1	5	1	4	21	21	20	62	
200	1	4	2	5	2	4	4	2	4	3	4	2	4	2	4	3	4	2	1	4	2	5	2	4	24	27	23	74	
201	2	4	1	5	1	5	5	1	4	2	4	3	5	1	4	2	4	3	2	4	1	5	1	5	23	23	28	74	
202	3	4	2	5	1	4	4	1	5	1	4	2	4	1	5	1	4	2	3	4	2	5	1	4	23	25	24	72	
203	2	4	1	5	2	5	4	1	5	2	4	1	4	1	5	2	4	1	2	4	1	5	2	5	22	26	24	72	
204	1	5	1	5	3	5	4	1	5	3	4	1	4	1	5	3	4	1	1	5	1	5	3	5	24	28	24	76	
205	1	5	1	5	2	4	4	2	5	2	4	2	4	2	5	2	4	2	1	5	1	5	2	4	24	27	23	74	
206	2	5	2	5	1	5	5	3	3	1	5	3	5	3	3	1	5	3	2	5	2	5	1	5	28	23	29	80	
207	3	4	1	4	1	4	3	2	3	1	5	2	3	2	3	1	5	2	3	4	1	4	1	4	23	19	24	66	
208	2	5	1	5	2	4	4	1	4	2	4	1	4	1	4	2	4	1	2	5	1	5	2	4	24	24	22	70	
209	1	5	2	5	3	5	5	2	4	3	5	1	5	2	4	3	5	1	1	5	2	5	3	5	28	28	26	82	
210	1	4	1	4	2	4	4	3	5	2	5	2	4	3	5	2	5	2	1	4	1	4	2	4	24	26	24	74	
211	2	4	1	5	1	4	4	2	5	1	4	1	4	2	5	1	4	1	2	4	1	5	1	4	22	25	21	68	
212	1	4	1	5	1	4	4	1	4	1	4	2	4	1	4	1	4	2	3	4	1	5	1	4	20	22	22	64	
213	2	4	1	5	1	5	4	1	4	2	4	2	4	1	4	2	4	2	2	4	1	5	1	5	22	23	25	70	
214	2	4	2	5	1	4	4	2	5	1	4	1	4	2	5	1	4	1	2	4	2	5	1	4	23	26	21	70	
215	1	4	3	5	2	5	5	3	5	2	4	1	5	3	5	2	4	1	1	4	3	5	2	5	26	30	24	80	
216	1	5	2	5	3	5	4	2	5	1	4	1	4	2	5	1	4	1	1	5	2	5	3	5	24	28	24	76	
217	1	5	1	5	2	4	4	1	5	1	4	1	4	1	5	1	4	1	1	5	1	5	2	4	22	25	21	68	
218	1	5	2	5	1	5	4	1	5	1	5	2	4	1	3	1	5	2	1	5	2	5	1	5	24	21	25	70	
219	2	4	3	4	1	4	5	2	3	1	5	3	5	2	3	1	5	3	2	4	3	4	1	4	26	21	27	74	
220	3	5	2	5	2	4	4	1	4	2	4	2	4	1	4	2	4	2	3	5	2	5	2	4	26	25	25	76	
221	2	5	1	5	3	5	4	2	4	1	5	1	4	2	4	1	5	1	2	5	1	5	3	5	25	25	26	76	
222	1	4	1	4	2	4	4	1	5	1	5	2	4	1	5	1	5	2	1	4	1	4	2	4	21	23	24	68	
223	2	4	2	5	1	4	5	1	5	1	4	3	5	1	5	1	4	3	2	4	2	5	1	4	23	25	26	74	
224	1	4	3	5	1	4	4	1	4	1	4	2	4	1	4	1	4	2	3	4	3	5	1	4	24	24	24	72	
225	1	4	2	5	3	5	4	2	4	2	4	1	4	2	4	1	4	2	4	1	2	5	3	5	24	27	25	76	
226	1	5	1	5	2	5	4	1	5	3	4	1	4	1	5	3	4	1	1	5	1	5	2	5	24	27	23	74	
227	1	5	1	5	2	4	4	1	5	1	4	1	4	1	5	1	4	1	1	5	1	5	2	4	24	25	23	72	
228	1	5	1	5	2	5	3	2	5	1	5	3	3	2	5	1	5	3	2	5	1	5	2	5	24	26	28	78	
229	1	5	1	5	2	5	3	2	5	1	5	3	3	2	5	1	5	3	2	5	1	5	2	5	25	26	27	78	
230	4	2	4	3	4	4	1	5	2	5	2	4	1	5	2	5	2	3	4	2	4	3	4	23	22	23	68		
231	1	5	1	5	3	4	5	1	3	1	4	1	5	1	3	1	4	1	1	5	1	5	3	4	25	24	25	74	
232	5	1	5	2	5	4	2	4	1	5	1	4	2	4	1	5	1	2	5	1	5	2	5	25	24	23	74		
233	1	4	2	4	1	4	4	3	4	1	5	1	4	3	4	1	5	1	1	4	2	4	1	4	24	23	21	68	
234	1	5	3	5	1	4	4	2	5	2	4	3	4	2	5	2	4	3	1	5	3	5	1	4	26	28	24	78	
235	1	5	3	5	1	4	4	2	5	2	4	3	4	2	5	2	4	3	1	5	3	5	1	4	24	26	26	76	
236	2	5	2	5	2	5	3	1	5	1	5	2	3	1	5	1	5	2	2	5	2	5	2	5	21	22	23	66	
237	1	4	1	4	3	4	4	1	4	1	4	1	4	1	4	1	4	1	1	4	1	4	3	4	21	22	23	66	
238	2	5	2	5	2	5	4	3	5	1	4	1	4	3	5	1	4	1	2	5	1	5	1	5	24	27	23	74	
239	3	5	1	5	1	4	4	2	5	2	4	2	4	2	5	2	4	2	3	5	1	5	1	5	22	26	25	76	
240	2	5	1	5	1	5	4	1	5	1	5	1	4	1	5	1	5	1	2	5	1	5	1	5	24	24	24	72	
241	1	4	1	4	1	4	4	1	5	2	5	1	4	1	5	2	5	1	1	4	1	4	1	4	22	23	21	66	
242	1	5	1	5	1	4	4	2	3	1	4	3	4	2	3	1	4	3	1	5	1	5	1	4	23	21	24	68	
243	2	5	2	5	2	5	5	3	3	1	5	2	5	3	3	1	5	2	2	5	2	5	2	5	28	24	28	80	
244	1	4	3	4	3	4	4	2	4	1	5	1	4	2	4	1	5	1	1	4	3	4	3	4	24	25	23	72	
245	2	4	2	5	2	4	4	1	4	1	4	1	4	1	4	1	4	1	2	4	2	5	2	4	21	21	22	68	
246	1	4	1	5	1	4	4	1	5	2	4	2	4	1	5	2	4	2	1	4	1	5	1	4	22	25	22	68	
247	1	5	2	5	1	5	5	2	5	1	4	1	5	2	5	1	4	1	1	5	2	5	1	5	25	26	25	74	
248	3	5	3	5	2	4	4	1	4	1	4	2	4	1	4	1	4	2	3	5	3	5	2	4	26	26	26	76	
249	2	5	2	5	3	5	4	2	4	1	5	1	4	2	4	1	5	1	2	5	2	5	3	5	26	26	26	76	
250	1	4	1	4	2	4	4	1	5	1	5	1	4	1	5	1	5	1	1	4	1	4	2	4	21	25	23	72	
251	1	5	1	5	1	4	5	1	5	2	4	2	5	1	5	2	4	2	1	5	1	5	1	5	26	27	23	76	
252	2	5	2	5	1	5	3	1	5	3	5	1	3	1	5	3	5	1	2	5	2	5	2	5	25	27	24	76	
253	1	4	3	4	2	4	4	2	5	2	5	2	4	2	5	2	5	2	1	4	3	4	2	4	23	21	22	66	
254	2	4	2	5	1	4	5	1	3	1	4	1	5	1	3	1	4	1	1	2	1	2	5	1	1	21	21	20	62
255	1	4	1	5	1	4	4	1	3	2	4	1	4	1	3	2	4	1	1	4	1	5	1	4	23	25	26	74	
256	1	4	1	5	1	5	4	2	4	3	4	3	4	2	4	3	4	2	4	3	1	4	1	5	23	24	23	70	
257	1	4	2	5	1	4	4	1	4	2	4	2	4	2	4	2	4	2	4	2	4	2	5	1	4	19	25	22	66

TABULASI DATA SKALA PENEMPATAN (X3)

SJ	1	2	3	4	5	6	7	8	9	10	11	12	13	14	15	16	17	18	19	20	21	22	23	24	F _{PN}	F _{PNII}	F _{PNIII}	TS _{PN}	
262	1	4	1	4	1	4	4	3	3	2	5	2	4	3	3	2	5	2	1	4	1	4	1	4	24	21	23	68	
263	1	5	2	5	2	4	4	2	4	1	4	1	4	2	4	1	4	1	1	5	2	5	2	4	24	25	21	70	
264	3	5	1	5	1	5	4	1	4	1	5	1	4	1	4	1	5	1	3	5	1	5	1	5	25	22	25	72	
265	2	4	1	4	1	4	4	2	5	2	5	2	4	2	5	2	5	2	2	4	1	4	1	4	24	24	24	72	
266	1	4	2	5	1	4	5	3	5	1	4	1	5	3	5	1	4	1	1	4	2	5	1	4	24	27	21	72	
267	1	4	1	5	1	4	3	2	5	2	4	2	3	2	5	2	4	2	1	4	1	5	1	4	21	26	21	68	
268	2	5	1	5	2	5	4	1	3	1	4	1	1	1	3	1	4	1	2	5	1	5	2	5	23	21	24	68	
269	1	5	1	5	3	4	5	1	3	1	4	1	5	1	3	1	4	1	1	5	1	5	3	4	23	22	23	68	
270	2	5	1	5	2	5	4	2	4	1	5	1	4	2	4	1	5	1	2	5	1	5	2	5	25	24	25	74	
271	1	4	2	4	1	4	4	3	4	1	5	1	4	3	4	1	5	1	1	4	2	4	1	4	24	23	21	68	
272	1	5	3	5	1	4	4	2	5	2	4	3	4	2	5	2	4	3	1	5	3	5	1	4	26	28	24	78	
273	2	5	2	5	2	5	3	1	5	1	5	2	3	1	5	1	5	2	2	5	2	5	2	5	24	26	26	76	
274	1	4	1	4	3	4	4	1	4	1	5	1	4	1	4	1	5	1	1	4	1	4	3	4	21	22	23	66	
275	2	1	2	5	2	4	5	2	5	1	4	1	5	2	5	1	4	1	2	4	2	5	2	4	34	27	23	74	
276	1	4	3	5	1	4	4	1	5	1	4	2	4	1	5	1	4	2	1	4	3	5	1	4	22	26	22	70	
277	1	4	2	5	1	5	4	2	5	2	4	1	4	2	5	2	4	1	1	1	2	5	1	5	23	27	22	72	
278	1	4	1	5	3	4	4	1	3	3	4	2	4	1	3	3	4	2	1	4	1	5	3	4	22	24	24	70	
279	3	4	1	5	2	5	3	1	3	2	1	1	3	1	3	2	4	1	3	4	1	5	2	5	22	22	24	68	
280	2	5	2	5	1	5	4	1	4	1	4	1	4	1	4	1	4	1	2	5	2	5	1	5	24	23	23	70	
281	1	5	3	5	1	4	5	2	4	2	4	2	5	2	4	2	4	2	1	5	3	5	1	4	27	26	23	76	
282	1	5	2	5	2	5	4	1	3	3	5	1	4	1	3	3	5	1	1	5	2	5	2	5	26	24	24	74	
283	2	4	1	4	3	4	4	1	3	2	5	2	4	1	3	2	5	2	2	4	1	4	3	4	23	21	26	70	
284	1	5	1	5	2	4	4	2	4	1	4	1	4	2	4	1	4	1	1	5	1	5	2	4	23	24	21	68	
285	2	5	1	5	1	5	5	1	5	1	5	1	5	1	5	1	5	1	2	5	1	5	1	5	25	24	25	74	
286	1	4	2	4	1	4	3	2	5	2	5	1	3	2	5	2	5	1	1	4	2	4	1	4	23	25	20	68	
287	1	4	1	5	1	4	4	1	5	3	4	2	4	1	5	3	4	2	1	4	1	5	1	4	22	26	22	70	
288	2	4	1	5	1	4	5	1	3	2	4	1	5	1	3	2	4	1	1	2	4	1	5	1	4	23	21	22	66
289	1	5	1	5	3	4	5	1	3	1	4	1	5	1	3	1	4	1	1	5	1	5	3	4	23	22	23	68	
290	2	5	1	5	2	5	4	2	4	1	5	1	4	2	4	1	5	1	2	5	1	5	2	5	25	24	25	74	
291	1	4	2	4	1	4	4	3	4	1	5	1	4	3	4	1	5	1	1	4	2	4	1	4	24	23	21	68	
292	1	5	3	5	1	4	4	2	5	2	4	3	4	2	5	2	4	3	1	5	3	5	1	4	26	28	24	78	
293	2	5	2	5	2	5	3	1	5	1	5	2	3	1	5	1	5	2	2	5	2	5	2	5	24	26	26	76	
294	1	4	1	4	3	4	4	1	4	1	5	1	4	1	4	1	5	1	1	4	1	4	3	4	21	22	23	66	
295	2	4	2	5	2	4	5	2	5	1	4	1	5	2	5	1	4	1	2	4	2	5	2	4	24	27	23	74	
296	1	4	3	5	1	4	4	1	5	1	4	2	4	1	5	1	4	2	1	1	3	5	1	4	22	26	22	70	

TABULASI DATA SKALA PRODUKTIVITAS (Y)

SJ	1	2	3	4	5	6	7	8	9	10	11	12	13	14	15	16	17	18	19	20	21	22	23	24	F _{PROI}	F _{PROII}	F _{PROIII}	TS _{PRO}	
1	5	5	1	2	5	1	5	5	2	2	1	2	5	5	5	1	5	2	5	1	2	5	1	5	12	26	40	78	
2	4	4	1	2	5	1	4	5	3	1	1	2	4	3	5	1	3	1	3	1	2	4	2	3	12	21	32	65	
3	5	5	1	2	5	1	5	5	1	2	1	1	7	4	3	4	1	5	1	3	1	3	4	1	3	12	21	33	66
4	5	5	1	2	5	1	5	5	1	2	1	1	4	3	4	1	1	1	5	1	1	4	1	3	12	20	32	64	
5	5	5	3	1	5	1	5	5	1	3	1	1	4	4	4	1	4	1	4	1	1	4	1	4	12	20	35	67	
6	4	4	2	1	5	2	4	5	2	2	2	1	5	4	4	2	4	2	4	2	1	5	1	4	12	23	37	72	
7	4	4	3	1	5	3	4	5	3	1	3	1	5	5	4	3	4	3	5	3	2	5	2	5	14	27	42	83	
8	4	4	2	1	5	2	4	5	2	1	2	2	5	4	4	2	4	2	4	2	3	5	3	4	14	25	37	76	
9	4	4	1	2	5	1	4	5	1	2	1	3	4	3	4	1	4	1	3	1	2	5	2	3	12	22	32	66	
10	4	4	2	3	5	2	4	5	1	1	2	2	4	5	5	2	4	2	5	2	1	5	1	5	12	27	37	76	
11	4	4	3	2	5	3	4	5	2	2	3	2	4	5	5	3	5	3	5	3	2	5	2	5	14	30	41	85	
12	4	4	2	1	5	2	4	5	1	1	2	2	4	4	5	2	5	2	4	2	3	5	3	4	14	27	36	76	
13	5	5	1	2	5	1	5	5	2	2	1	3	5	5	5	1	5	1	5	1	2	5	2	5	13	26	40	79	
14	5	5	1	3	5	1	5	5	3	1	1	2	4	3	5	1	3	1	3	1	1	4	1	3	12	21	34	67	
15	5	5	2	2	5	2	5	5	2	1	2	1	4	3	4	2	5	2	3	2	1	4	1	3	13	23	35	71	

TABULASI DATA SKALA PRODUKTIVITAS (Y)

100
90
80
70
60
50
40
30
20
10
0

S1	1	2	3	4	5	6	7	8	9	10	11	12	13	14	15	16	17	18	19	20	21	22	23	24	F (FRODI)	F (FRODI)	F (FRODI)	(S (FRODI))			
16	5	5	3	1	5	3	5	5	1	2	3	1	4	3	4	3	4	3	3	3	2	4	2	3	15	24	38	77			
17	3	4	2	1	4	2	5	3	1	3	2	2	4	4	4	3	4	2	4	2	4	2	3	4	3	4	12	24	36	72	
18	4	4	1	2	5	1	4	5	2	2	1	3	5	4	4	1	4	1	4	1	5	1	1	5	1	5	11	24	37	72	
19	4	4	1	3	5	1	4	5	3	1	1	2	5	5	4	1	4	1	5	1	1	5	1	5	1	5	12	24	36	72	
20	4	4	2	2	5	2	4	5	2	1	2	1	5	4	4	2	4	2	4	2	4	2	1	5	1	4	12	24	36	72	
21	5	5	1	1	5	1	5	5	1	2	1	1	4	3	4	1	4	1	3	1	2	5	2	3	13	21	32	66	77		
22	5	5	2	1	5	2	5	5	1	1	2	2	4	5	5	2	4	2	5	2	1	5	1	5	1	5	13	25	39	77	
23	4	4	1	2	5	1	4	5	2	2	1	1	4	5	5	1	5	1	5	1	5	1	2	5	2	5	12	26	35	73	
24	4	4	1	1	5	1	4	5	1	1	1	2	4	4	5	1	5	1	4	1	1	5	1	4	1	4	11	23	32	66	
25	5	5	1	2	5	1	5	5	1	2	1	1	5	5	5	1	5	1	5	1	1	5	1	5	1	5	12	25	37	74	
26	5	5	2	1	5	2	5	5	1	3	2	1	4	4	4	2	4	2	4	2	4	2	1	4	1	4	13	22	36	71	
27	5	5	1	1	5	1	5	5	2	2	1	1	5	4	4	1	4	1	4	1	4	1	2	5	2	4	13	22	39	73	
28	5	5	1	1	5	1	5	5	3	1	1	2	5	5	4	1	4	1	5	1	1	5	1	5	1	5	12	22	39	73	
29	3	4	2	2	4	2	5	3	2	1	2	1	5	4	4	2	4	2	4	2	4	2	1	5	1	4	10	24	35	69	
30	4	4	1	1	5	1	4	5	1	2	1	1	4	3	4	1	4	1	3	1	3	1	2	5	2	3	12	21	30	63	
31	4	4	1	1	5	1	4	5	1	1	1	2	4	5	5	1	4	1	5	1	1	5	1	5	1	5	11	23	34	68	
32	5	5	1	2	5	1	5	5	2	2	1	1	4	3	4	1	4	1	3	1	1	4	1	3	1	3	12	20	33	65	
33	5	5	1	1	5	1	5	5	1	1	1	1	4	4	4	1	4	1	4	1	1	4	1	4	1	4	12	20	33	65	
34	3	4	2	1	4	2	5	3	2	2	2	1	5	4	4	2	4	2	4	2	4	2	1	5	1	4	10	23	36	69	
35	4	4	3	1	5	3	4	5	3	1	3	1	5	5	4	3	4	3	5	3	2	5	2	5	1	5	14	27	42	83	
36	4	4	2	1	5	2	4	5	2	1	2	2	5	4	4	2	4	2	4	2	4	2	3	5	3	4	14	25	37	76	
37	5	5	1	2	5	1	5	5	2	2	1	3	4	3	4	1	4	1	3	1	2	5	2	3	1	3	13	22	35	70	
38	5	5	2	3	5	2	5	5	1	1	2	2	4	5	5	2	4	2	5	2	1	5	1	5	1	5	13	27	39	79	
39	3	4	3	2	4	3	5	3	1	1	3	1	4	5	5	3	5	3	5	3	5	3	2	5	2	5	12	30	38	80	
40	4	4	2	1	5	2	4	5	2	2	2	2	4	4	5	2	5	2	4	2	4	2	3	5	3	4	14	27	37	78	
41	4	4	1	2	5	1	4	5	1	1	1	3	5	5	5	1	5	1	5	1	5	1	2	5	2	5	12	26	36	74	
42	4	4	1	3	5	1	4	5	2	2	1	2	4	4	4	1	4	1	4	1	4	1	1	4	1	4	11	22	34	67	
43	4	4	2	2	5	2	4	5	1	1	2	1	5	4	4	2	4	2	4	2	1	5	1	4	1	4	12	24	35	71	
44	5	5	3	1	5	3	5	5	2	2	3	1	5	5	4	3	4	3	5	3	2	5	2	5	1	5	15	27	44	86	
45	5	5	2	1	5	2	5	5	1	1	2	2	5	4	4	2	4	2	4	2	4	2	3	5	3	4	15	25	38	78	
46	4	4	1	2	4	1	5	3	1	1	1	3	4	3	4	1	4	1	3	1	2	5	2	3	1	3	10	22	30	62	
47	4	4	1	3	5	1	4	5	2	1	1	2	4	5	5	1	4	1	5	1	1	5	1	5	1	5	11	25	35	71	
48	4	4	1	2	5	1	4	5	2	2	3	1	4	3	5	1	3	3	3	2	1	4	1	3	1	3	11	20	36	67	
49	5	5	2	1	5	1	5	5	1	1	2	1	4	3	4	2	5	1	3	2	3	4	1	3	1	3	13	23	33	69	
50	5	5	2	1	5	1	5	5	1	1	2	1	4	3	4	3	4	3	3	2	1	4	1	3	1	3	13	21	35	69	
51	4	4	1	1	5	2	4	5	2	2	2	1	4	4	4	2	4	1	4	2	1	4	2	4	1	4	12	22	35	69	
52	4	4	1	2	5	3	4	5	1	1	1	2	5	4	4	1	4	1	4	2	2	5	2	4	1	4	12	25	34	71	
53	5	5	1	2	5	2	5	5	2	2	1	2	5	5	4	2	4	1	5	3	1	5	1	5	1	5	12	24	35	71	
54	5	5	1	2	5	1	5	5	1	1	1	1	5	4	4	3	4	1	4	2	1	5	1	4	1	4	12	24	35	71	
55	3	4	1	1	4	2	5	3	2	1	1	1	4	3	4	2	4	1	3	1	1	5	1	3	1	3	9	22	29	60	
56	4	4	2	1	5	3	4	5	2	2	2	1	4	5	5	1	4	2	5	2	1	5	1	5	1	5	12	25	38	75	
57	4	4	3	1	5	2	4	5	1	1	3	1	4	5	5	1	5	3	5	3	2	5	2	5	1	5	14	26	39	79	
58	4	4	3	1	5	2	4	5	1	1	3	2	4	4	5	2	5	2	4	2	3	5	3	4	1	4	15	26	37	78	
59	5	5	2	1	5	1	5	5	2	2	1	3	5	5	3	5	1	5	1	5	1	2	5	2	5	1	5	13	28	40	81
60	4	4	2	3	5	2	4	5	1	1	2	2	4	4	4	2	4	2	4	1	1	4	1	4	1	4	12	24	34	70	
61	5	5	3	2	5	3	5	5	2	2	3	1	5	4	4	1	4	3	4	2	2	5	2	4	1	4	15	25	41	81	
62	5	5	2	1	5	2	5	5	1	1	2	2	5	5	4	1	4	2	5	3	3	5	3	5	1	5	15	25	41	81	
63	5	5	1	2	5	1	5	5	2	2	1	3	5	4	4	2	4	1	4	2	2	5	2	4	1	4	13	24	39	76	
64	5	5	1	3	5	1	5	5	1	1	1	2	4	3	4	1	4	1	3	1	1	5	1	3	1	3	12	22	32	66	
65	5	5	1	3	5	1	5	5	1	1	1	2	4	3	4	1	4	1	3	1	1	5	1	3	1	3	10	26	34	70	
66	3	4	2	2	4	2	5	3	1	1	2	1	4	5	5	2	4	2	5	1	1	5	1	5	1	5	14	22	37	73	
67	4	4	3	1	5	1	4	5	1	1	3	1	5	4	4	1	4	3	4	2	2	5	2	4	1	4	14	23	34	71	
68	4	4	2	1	5	2	4	5	2	2	2	2	4	3	4	1	4	2	3	1	3	5	3	3	1	3	12	25	36	73	
69	4	4	1	2	5	1	4	5	1	1	1	3	4	5	5	1	4	1	5	2	2	5	2	5	1	5	12	27	38	77	
70	5	5	1	3	5	1	5	5	2	2	1	2	4	5	5	2	5	1	5	1	1	5	1	5	1	5	13	24	35	72	
71	5	5	2	2	5	1	5	5	1	1	2	1	4	4	5	1	5	2	4	1	1	5	1	4	1	4	13	26	36	75	
72	5	5	1	1	5	2	5	5	1	1	1	1	5	5	5	1	5	1	5	1	5	1	2	5	2	5	13	21	38	72	
73	5	5	2	1	5	1	5	5	2	1	2	2	4	4	4	2	4	2	4	2	4	2	1	4	1	4	10	23	33	66	

TABULASI DATA SKALA PRODUKTIVITAS (Y)

	1	2	3	4	5	6	7	8	9	10	11	12	13	14	15	16	17	18	19	20	21	22	23	24	F_PRDI	F_PRDI	F_PRDI	TS_PRD	
74	4	4	1	1	5	2	3	5	3	1	1	2	5	4	4	1	1	1	1	1	1	5	1	4	11	22	33	66	
75	4	4	1	2	5	1	4	5	1	1	1	4	3	1	1	4	1	3	2	1	5	1	3	11	21	30	62		
76	5	5	2	3	5	1	5	5	2	2	2	1	4	5	5	1	4	2	5	1	4	5	1	5	13	23	39	75	
77	5	5	1	1	5	1	5	5	1	1	1	1	4	5	5	2	5	1	5	1	2	5	2	5	13	26	35	74	
78	3	1	1	1	4	1	5	3	2	2	1	2	4	4	5	3	5	1	4	1	1	5	1	4	9	25	33	67	
79	4	4	2	2	5	2	4	5	1	1	2	1	5	5	5	2	5	2	5	1	1	5	1	5	12	27	36	75	
80	1	4	1	1	5	3	1	5	2	2	1	1	4	1	4	1	1	1	4	2	2	4	2	4	12	23	34	69	
81	5	5	1	1	5	2	5	5	1	1	1	2	5	4	4	2	1	1	4	3	1	5	1	4	12	23	37	72	
82	5	5	1	2	5	1	5	5	1	1	1	5	4	4	3	1	1	1	2	1	5	1	4	12	24	35	71		
83	3	1	1	1	2	1	2	5	3	1	1	1	1	3	1	2	1	1	3	1	1	5	1	3	9	22	28	59	
84	1	3	2	1	5	3	4	5	2	2	2	1	4	5	5	1	4	2	5	2	1	5	1	5	12	25	38	75	
85	4	3	3	3	5	2	1	5	4	3	3	1	4	5	5	3	5	3	5	3	2	5	2	5	14	26	39	79	
86	5	5	2	1	5	1	5	5	1	1	2	2	4	3	5	2	5	2	1	2	3	5	3	4	15	26	37	78	
87	5	5	1	1	5	1	5	5	2	1	2	1	5	5	5	3	5	1	5	1	1	5	2	5	13	26	38	77	
88	5	5	1	2	5	2	5	5	2	2	1	2	3	1	1	2	4	1	4	1	2	4	2	4	13	24	36	73	
89	5	5	1	2	5	3	5	5	1	2	1	2	5	4	4	3	1	1	4	2	1	5	1	4	12	26	36	74	
90	3	4	3	2	4	2	5	3	1	1	1	2	5	1	1	3	1	1	4	2	1	5	1	4	9	24	33	66	
91	4	4	1	1	5	1	1	5	2	2	1	1	3	4	1	1	1	1	3	2	1	5	1	3	11	20	32	63	
92	4	4	2	1	5	2	3	5	1	2	1	1	5	5	2	1	2	5	1	1	5	1	5	12	25	35	72		
93	5	5	3	1	5	3	5	5	2	2	1	4	5	5	3	5	3	5	4	2	2	5	2	5	15	29	42	86	
94	5	5	2	3	5	2	5	5	3	1	2	2	4	5	5	2	4	3	5	5	3	4	4	15	27	38	80		
95	3	4	1	2	4	1	5	3	2	2	1	4	5	5	1	5	1	5	2	2	5	2	5	10	26	38	74		
96	4	4	2	2	5	1	4	5	1	1	2	2	1	4	4	1	4	2	1	1	1	1	1	4	12	22	34	68	
97	1	4	3	2	5	2	4	5	1	1	5	1	5	4	4	2	4	3	4	1	2	5	2	4	14	25	36	75	
98	5	5	2	1	5	3	5	5	2	1	2	2	5	4	1	3	4	2	1	2	3	5	3	4	15	27	39	81	
99	5	5	1	2	5	2	5	5	1	2	1	3	1	3	1	2	4	1	3	3	2	5	2	3	13	24	37	74	
100	3	4	1	3	4	1	5	3	1	1	1	2	1	5	5	1	1	1	5	2	1	5	1	5	9	25	34	68	
101	1	1	2	2	5	1	4	5	1	1	2	1	2	5	1	5	2	5	1	1	5	1	5	12	25	35	72		
102	4	4	3	1	5	2	4	5	2	2	2	1	1	4	5	2	5	3	1	1	2	5	2	4	14	26	37	77	
103	5	5	2	3	5	3	5	5	3	2	2	5	5	5	3	5	2	5	2	3	5	3	5	15	26	40	81		
104	5	5	1	2	5	2	5	5	2	2	1	3	4	3	1	2	1	1	1	1	2	4	2	4	13	24	37	74	
105	5	5	1	3	5	1	5	5	1	1	1	2	5	1	1	1	4	1	2	4	2	1	5	1	4	12	23	36	71
106	5	5	2	2	5	1	5	5	1	1	2	1	4	5	5	1	4	2	5	1	1	5	1	5	13	24	37	74	
107	3	4	1	1	4	2	5	3	2	2	1	1	4	5	2	1	5	1	5	1	2	5	2	5	10	25	34	69	
108	4	4	2	1	5	2	4	5	1	1	2	2	4	4	5	2	5	2	4	1	1	5	1	4	12	25	38	71	
109	5	5	1	2	5	1	5	5	1	1	1	2	5	5	1	5	1	5	2	2	5	2	5	13	26	38	76		
110	5	5	1	1	5	1	5	5	1	1	1	2	4	1	4	1	1	4	1	1	4	1	4	12	20	34	66		
111	2	4	1	2	4	2	5	3	2	1	1	1	5	4	1	2	1	1	1	1	1	5	1	4	9	24	32	65	
112	5	5	2	1	5	3	3	5	2	2	2	1	5	3	4	3	3	2	4	2	3	5	3	4	12	21	37	70	
113	4	4	1	1	5	1	4	5	1	4	1	1	4	5	5	1	1	5	1	1	5	2	5	2	5	12	24	38	69
114	5	5	1	1	5	1	5	5	1	1	2	4	5	5	1	5	1	5	1	1	5	1	5	1	5	12	24	36	72
115	5	5	2	2	5	1	5	5	2	2	2	3	4	1	5	1	5	2	4	1	1	5	1	4	13	24	37	74	
116	5	5	1	1	5	2	5	5	1	1	1	1	5	5	5	2	5	1	5	1	2	5	2	5	13	27	36	76	
117	5	5	1	1	5	3	5	5	1	1	1	2	1	4	4	3	4	1	1	2	1	4	1	4	12	24	35	71	
118	3	4	1	2	1	2	5	3	1	1	1	1	1	2	4	1	2	4	1	4	3	1	5	1	4	9	24	33	66
119	4	4	1	1	5	1	1	5	2	1	1	1	5	4	4	1	1	4	2	1	5	1	4	11	21	34	66		
120	5	5	2	1	5	2	5	5	2	2	2	1	4	5	5	2	4	2	5	1	1	5	1	5	13	25	39	77	
121	5	5	3	1	5	3	5	5	2	1	3	1	4	5	3	5	3	5	5	2	2	5	2	5	15	29	40	84	
122	3	4	2	1	1	2	5	3	1	1	2	2	1	1	5	2	5	2	1	3	3	5	3	4	12	27	35	74	
123	4	4	1	2	5	1	4	5	1	3	1	4	5	5	5	1	5	1	5	2	2	5	2	5	12	26	37	75	
124	4	4	2	3	5	1	4	5	1	4	2	2	4	4	3	1	4	2	1	1	1	4	1	4	12	22	34	68	
125	5	5	3	2	5	2	5	5	2	1	3	1	5	1	1	2	4	3	4	1	2	5	2	4	15	25	39	79	
126	5	5	2	1	5	3	5	5	2	2	2	2	5	1	1	1	1	2	1	2	3	5	3	4	15	27	40	82	
127	5	5	1	2	5	2	5	5	1	1	1	3	4	5	5	2	1	1	5	3	2	5	2	5	13	27	39	79	
128	5	5	1	3	5	3	5	5	1	1	1	2	4	5	5	3	5	1	5	2	1	5	1	5	12	30	37	79	
129	3	4	2	2	4	2	5	3	1	1	2	1	1	1	5	2	5	2	4	3	1	5	1	4	10	26	34	70	
130	3	4	3	4	5	1	4	5	4	1	3	1	5	5	5	3	5	3	5	2	2	5	2	5	14	25	39	78	
131	5	5	2	1	5	2	5	5	2	1	2	2	4	1	1	2	4	2	4	1	3	4	3	4	15	24	37	76	
132	5	5	1	2	5	3	5	5	2	2	1	3	5	1	4	3	4	1	4	2	2	5	2	4	13	27	39	79	
133	3	1	1	1	4	2	5	3	1	3	1	1	5	3	4	2	4	1	1	3	1	5	1	4	9	23	33	65	
134	1	4	2	1	5	1	4	5	1	1	2	1	1	5	5	1	4	2	5	2	1	5	1	5	12	23	36	71	
135	1	4	3	1	5	1	4	5	2	2	3	1	5	5	1	5	3	5	1	2	5	2	5	14	25	39	78		
136	5	5	2	1	5	2	5	5	1	1	2	2	1	4	5	2	5	2	4	1	3	5	3	4	15	27	36	78	
137	5	5	3	2	5	3	5	5	1	1	1	3	5	5	3	5	1	5	2	2	5	2	5	13	30	39	82		
138	5	5	2	3	5	2	5	5	1	1	2	2	4	4	4	2	1	2	4	3	1	4	1	4	13	24	38	75	
139	5	5	3	2	5	3	5	5	3	3	1	5	4	4	3	3	4</												

TABULASI DATA SKALA PRODUKTIVITAS (Y)

SI	1	2	3	4	5	6	7	8	9	10	11	12	13	14	15	16	17	18	19	20	21	22	23	24	F PRDI	F PRDI1	F PRDI2	TS. PROI
147	5	5	2	1	5	2	5	5	1	1	2	1	5	5	5	2	5	2	5	1	4	5	1	5	13	26	38	77
148	5	5	3	1	5	1	5	5	2	1	3	1	1	4	4	1	4	3	4	2	2	4	2	4	15	21	39	75
149	5	5	2	1	5	1	5	5	2	2	2	2	5	4	4	1	1	2	4	1	3	5	3	4	15	23	39	77
150	5	5	1	2	5	2	5	5	1	1	1	3	5	4	1	2	4	1	4	1	2	5	2	1	13	25	36	74
151	3	4	2	3	4	1	5	3	1	1	2	2	1	5	5	1	4	2	5	2	1	5	1	5	10	25	36	71
152	3	4	3	2	4	1	5	3	2	2	3	1	4	5	5	1	5	3	5	1	2	5	2	5	12	26	38	76
153	4	4	2	1	5	1	4	5	1	1	2	2	4	1	5	1	5	2	4	1	3	5	3	4	14	25	34	73
154	4	4	1	2	5	1	1	5	1	1	1	3	5	5	1	5	1	5	1	2	5	2	5	12	26	36	74	
155	5	5	1	3	5	2	5	5	1	1	1	2	1	4	4	2	4	1	4	1	3	4	1	1	12	24	34	70
156	5	5	2	2	5	3	5	5	1	1	2	1	4	4	5	3	5	2	4	2	4	5	1	4	13	28	36	77
157	5	5	3	1	5	2	5	5	2	1	3	1	5	5	2	5	2	5	3	2	5	2	5	15	15	27	43	85
158	5	5	2	1	5	1	5	5	2	2	2	2	1	4	1	1	2	1	2	3	4	3	4	15	21	39	76	
159	3	4	1	2	4	2	5	3	1	1	1	3	5	4	4	2	4	1	4	1	2	5	2	4	10	25	33	68
160	3	4	1	3	4	3	5	3	1	1	1	2	5	4	4	3	1	1	4	2	1	5	1	4	9	27	33	69
161	4	4	2	2	5	2	4	5	2	1	2	1	4	5	5	2	4	2	5	3	1	5	1	5	12	26	38	76
162	4	4	1	1	5	1	4	5	2	2	1	1	4	5	5	1	5	1	5	2	2	5	2	5	12	25	36	75
163	5	5	2	1	5	1	5	5	1	1	2	2	4	4	5	1	5	2	4	1	1	5	1	4	13	23	36	72
164	5	5	1	2	5	2	5	5	1	1	1	1	5	5	2	5	1	5	2	4	1	1	5	1	13	28	36	77
165	5	5	1	1	5	3	5	5	2	2	1	2	4	4	4	3	4	1	4	2	1	4	1	4	12	24	37	73
166	5	5	1	2	5	2	5	5	1	1	1	1	5	4	4	2	1	1	3	1	5	1	4	12	24	36	72	
167	3	4	2	1	4	3	5	3	1	1	2	1	4	5	5	2	1	2	5	2	1	5	1	5	10	26	35	71
168	3	4	1	1	4	2	5	3	1	1	1	1	4	5	5	3	5	1	5	2	2	5	2	5	10	28	33	71
169	4	4	1	1	5	1	4	5	1	1	1	2	4	1	5	2	5	1	4	3	1	5	1	1	11	24	34	69
170	4	4	2	2	5	2	4	5	2	1	2	1	5	5	5	1	5	2	5	2	1	5	1	5	12	26	38	76
171	5	5	1	1	5	3	5	5	2	2	1	1	1	4	4	2	4	1	4	1	2	4	2	4	13	24	35	72
172	5	5	1	1	5	2	5	5	1	1	1	2	4	4	5	3	5	1	4	2	1	5	1	1	12	26	38	76
173	5	5	1	2	5	1	5	5	1	1	1	1	5	5	2	5	1	5	3	1	5	1	5	12	26	38	76	
174	5	5	1	1	5	1	5	5	2	2	1	1	1	4	4	1	4	1	4	2	1	4	1	1	12	24	36	72
175	3	4	2	1	4	2	5	3	1	1	2	1	5	4	4	1	4	2	4	1	1	5	1	1	10	22	33	65
176	3	4	3	1	4	3	5	3	1	1	3	1	5	4	4	2	4	3	4	1	2	5	2	4	12	25	35	72
177	4	4	2	1	5	2	4	5	1	1	2	2	4	5	5	3	4	2	5	2	3	5	3	5	14	28	37	79
178	4	4	1	2	5	1	4	5	1	1	1	3	5	4	4	2	4	1	4	3	2	5	2	4	12	24	36	72
179	5	5	2	3	5	1	5	5	2	1	2	2	4	5	5	1	4	2	5	2	1	5	1	5	13	25	40	78
180	5	5	3	2	5	2	5	5	1	1	3	1	4	5	5	1	5	3	5	1	2	5	2	5	15	27	39	81
181	5	5	2	1	5	1	5	5	1	1	2	2	4	4	5	2	5	2	4	1	3	5	3	1	15	26	36	77
182	5	5	1	2	5	2	5	5	2	1	1	3	5	5	5	1	5	1	5	2	2	5	2	5	13	27	40	80
183	3	4	1	3	4	1	5	3	2	2	1	2	4	1	6	2	1	4	1	1	1	1	1	1	9	23	33	65
184	3	4	2	4	1	5	3	1	1	1	2	1	1	1	5	1	5	2	4	2	1	5	1	4	10	24	35	67
185	4	4	3	1	5	1	4	5	1	1	3	1	5	5	5	1	5	3	5	1	2	5	2	5	14	25	38	77
186	4	4	2	1	5	2	4	5	2	2	2	2	1	1	1	1	2	4	1	3	4	3	4	14	25	36	75	
187	4	4	2	1	5	2	4	5	2	2	2	3	1	1	1	1	2	4	1	3	4	3	4	13	24	36	73	
188	5	5	1	2	5	1	5	5	1	1	1	3	5	1	4	1	4	1	1	2	2	5	2	4	13	23	37	73
189	5	5	1	2	5	1	5	5	1	1	1	3	5	1	4	1	4	1	1	2	2	5	2	4	13	23	37	73
189	5	5	2	3	5	2	5	5	1	1	2	2	4	5	5	1	4	2	5	1	1	5	1	5	13	26	38	77
190	5	5	3	2	5	1	5	5	1	1	3	1	5	4	2	1	3	4	1	2	5	2	3	5	15	24	38	77
191	3	4	2	1	4	1	5	3	2	1	2	2	4	5	5	1	5	1	5	1	2	5	3	5	12	25	37	74
192	3	4	1	2	4	1	5	3	2	2	1	3	4	5	5	1	5	1	5	1	2	5	2	5	10	26	36	72
193	4	4	1	3	5	1	4	5	1	1	1	2	4	4	5	1	5	1	3	1	1	5	1	4	11	25	32	68
194	4	4	1	3	5	1	4	5	1	1	1	2	4	4	5	1	5	1	3	1	1	5	1	4	12	26	36	74
194	4	4	2	2	5	2	4	5	1	1	2	1	5	5	1	5	2	5	2	1	5	1	5	1	12	26	36	74
195	5	5	3	1	5	3	5	5	2	2	3	1	4	4	4	2	4	3	1	1	2	4	2	4	15	24	39	78
196	5	5	2	1	5	2	5	5	1	1	2	2	4	1	5	3	5	2	1	2	3	5	3	1	15	28	37	80
197	5	5	1	2	5	1	5	5	1	1	1	3	5	5	5	2	5	1	5	3	2	5	2	5	13	27	40	80
198	5	5	1	3	5	2	5	5	1	1	1	2	4	1	1	1	1	4	1	2	1	4	1	4	12	23	35	70
198	5	5	1	3	5	2	5	5	1	1	1	2	4	1	1	1	1	4	1	2	1	4	1	4	12	23	35	70
199	3	4	2	2	4	3	5	3	1	1	2	1	5	1	1	2	1	2	4	1	1	5	1	4	10	25	33	68
199	3	4	2	2	4	3	5	3	1	1	2	1	5	1	1	2	1	2	4	1	1	5	1	4	10	25	33	68
200	4	4	1	1	5	2	4	5	2	1	1	1	5	4	4	3	4	1	1	2	5	2	4	12	25	34	71	
200	4	4	1	1	5	2	4	5	2	1	1	1	5	4	4	3	4	1	1	2	5	2	4	12	25	34	71	
201	4	4	2	1	5	1	4	5	2	2	2	2	4	5	5	2	4	2	5	3	1	5	1	5	12	24	40	76
202	5	5	1	2	5	1	5	5	1	1	1	1	5	4	1	1	1	4	2	2	5	2	4	13	23	35	71	
202	5	5	1	2	5	1	5	5	1	1	1	1	5	4	1	1	1	4	2	2	5	2	4	13	23	35	71	
203	5	5	1	1	5	2	5	5	1	1	1	2	4	5	5	1	4	1	5	1	1	5	1	5	12	24	36	72
203	5	5	1	1	5	2	5	5	1	1	1	2	4	5	5	1	4	1	5	1	1	5	1	5	12	24	36	72
204	5	5	1	2	5	3	5	5	1	1	1	1	4	5	5	2	5	1	5	1	1	5	1	5	13	26	36	75
205	5																											

2. VALIDITAS DAN RELIABILITAS SKALA PELATIHAN (X2)

Case Processing Summary

		N	%
Cases	Valid	296	100.0
	Excluded ^a	0	.0
	Total	296	100.0

a. Listwise deletion based on all variables in the procedure.

Reliability Statistics

Cronbach's Alpha	N of Items
.991	6

Item-Total Statistics

	Scale Mean if Item Deleted	Scale Variance if Item Deleted	Corrected Item-Total Correlation	Cronbach's Alpha if Item Deleted
PLT0004	7.8615	10.825	.983	.988
PLT0007	7.8514	10.968	.947	.992
PLT0008	7.8682	10.915	.975	.989
PLT0009	7.8682	10.881	.976	.989
PLT0010	7.8514	10.907	.955	.991
PLT0016	7.8615	10.825	.983	.988

Scale Statistics

Mean	Variance	Std. Deviation	N of Items
9.4324	15.650	3.95596	6

3. VALIDITAS DAN REALIBILITAS SKALA PENEMPATAN (X3)

Case Processing Summary

		N	%
Cases	Valid	296	100.0
	Excluded ^a	0	.0
	Total	296	100.0

a. Listwise deletion based on all variables in the procedure.

Reliability Statistics

Cronbach's Alpha	N of Items
.744	16

Item-Total Statistics

	Scale Mean if Item Deleted	Scale Variance if Item Deleted	Corrected Item-Total Correlation	Cronbach's Alpha if Item Deleted
PMP0001	46.7365	18.696	.313	.733
PMP0002	43.8818	19.081	.363	.730
PMP0003	46.6081	18.205	.349	.730
PMP0004	43.4730	19.504	.361	.732
PMP0006	43.9662	19.206	.284	.736
PMP0009	43.9662	18.975	.203	.747
PMP0010	46.7838	18.333	.380	.727
PMP0012	46.7128	17.527	.508	.713
PMP0015	43.9662	18.975	.203	.747
PMP0016	46.7838	18.333	.380	.727
PMP0018	46.7128	17.527	.508	.713
PMP0019	46.7365	18.696	.313	.733
PMP0020	43.8818	19.081	.363	.730
PMP0021	46.6081	18.205	.349	.730
PMP0022	43.4730	19.504	.361	.732
PMP0024	43.9662	19.206	.284	.736

Scale Statistics

Mean	Variance	Std. Deviation	N of Items
48.2838	20.909	4.57264	16

4. VALIDITAS DAN REALIBILITAS SKALA PRODUKTIVITAS (Y)

Case Processing Summary

		N	%
Cases	Valid	296	100.0
	Excluded ^a	0	.0
	Total	296	100.0

a. Listwise deletion based on all variables in the procedure.

Reliability Statistics

Cronbach's Alpha	N of Items
.774	18

Item-Total Statistics

	Scale Mean if Item Deleted	Scale Variance if Item Deleted	Corrected Item-Total Correlation	Cronbach's Alpha if Item Deleted
PRO0001	53.6385	24.537	.286	.770
PRO0002	53.4561	25.917	.215	.773
PRO0003	56.3480	23.312	.514	.751
PRO0005	53.1216	25.707	.359	.766
PRO0006	56.2736	24.369	.336	.766
PRO0008	53.3041	24.450	.290	.770
PRO0011	56.3277	23.340	.508	.751
PRO0014	53.6250	24.276	.440	.758
PRO0015	53.4223	25.323	.336	.766
PRO0016	56.2568	24.795	.273	.771
PRO0017	53.5541	25.543	.285	.769
PRO0018	56.3378	23.391	.494	.752
PRO0019	53.6250	24.276	.440	.758
PRO0020	56.2601	24.735	.284	.770
PRO0021	56.3311	24.615	.311	.768
PRO0022	53.1318	26.149	.237	.771
PRO0023	56.3277	24.540	.326	.766
PRO0024	53.6250	24.276	.440	.758

Scale Statistics

Mean	Variance	Std. Deviation	N of Items
57.9392	27.264	5.22150	18

IV. LAMPIRAN UJI ASUMSI KLASIK

2. Uji t

Regression 11

LAMPIRAN UJI ASUMSI KLASIK

1. Uji Multikolinearitas

Coefficients ^a

Model		Collinearity Statistics	
		Tolerance	VIF
1	Recruitment	.710	1.408
	Pelatihan	.997	1.003
	Penempatan	.712	1.405

a. Dependent Variable: Produktivitas

Collinearity Diagnostics ^a

Model	Dimension	Eigenvalue	Condition Index	Variance Proportions			
				(Constant)	Recruitment	Pelatihan	Penempatan
1	1	3.870	1.000	.00	.00	.01	.00
	2	.120	5.690	.00	.01	.95	.00
	3	.006	24.908	.45	.84	.03	.03
	4	.004	30.620	.54	.15	.01	.96

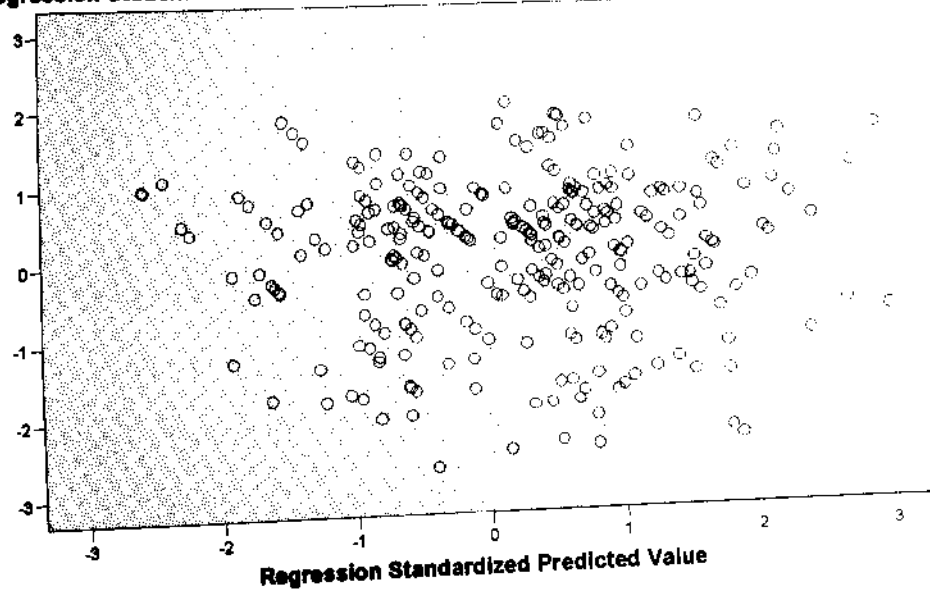
a. Dependent Variable: Produktivitas

2. Uji Heteroskedastis

Scatterplot

Dependent Variable: Produktivitas

Regression Studentized Residual





V. LAMPIRAN UJI NORMALITAS DATA

100

100

100

100

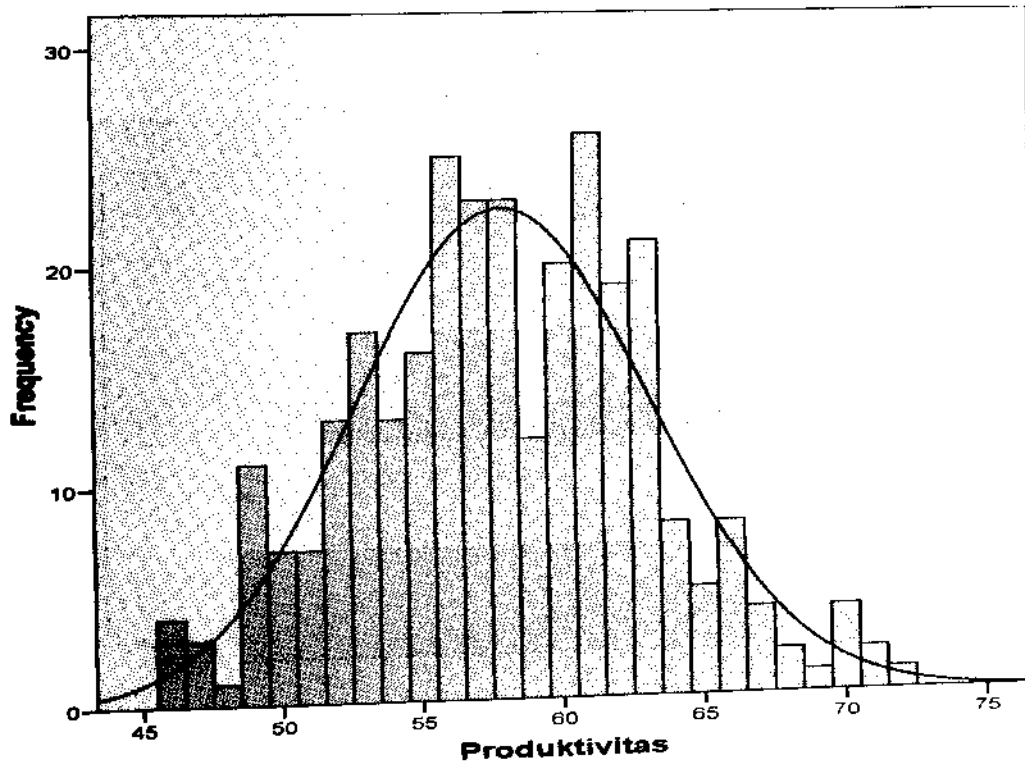
LAMPIRAN UJI NORMALITAS

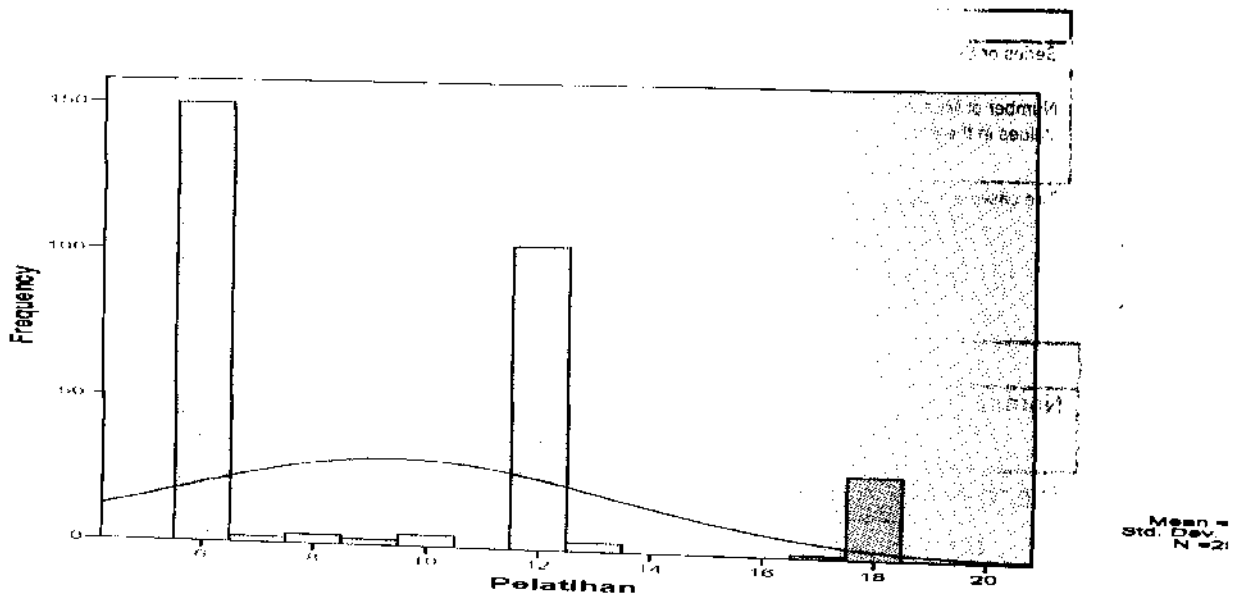
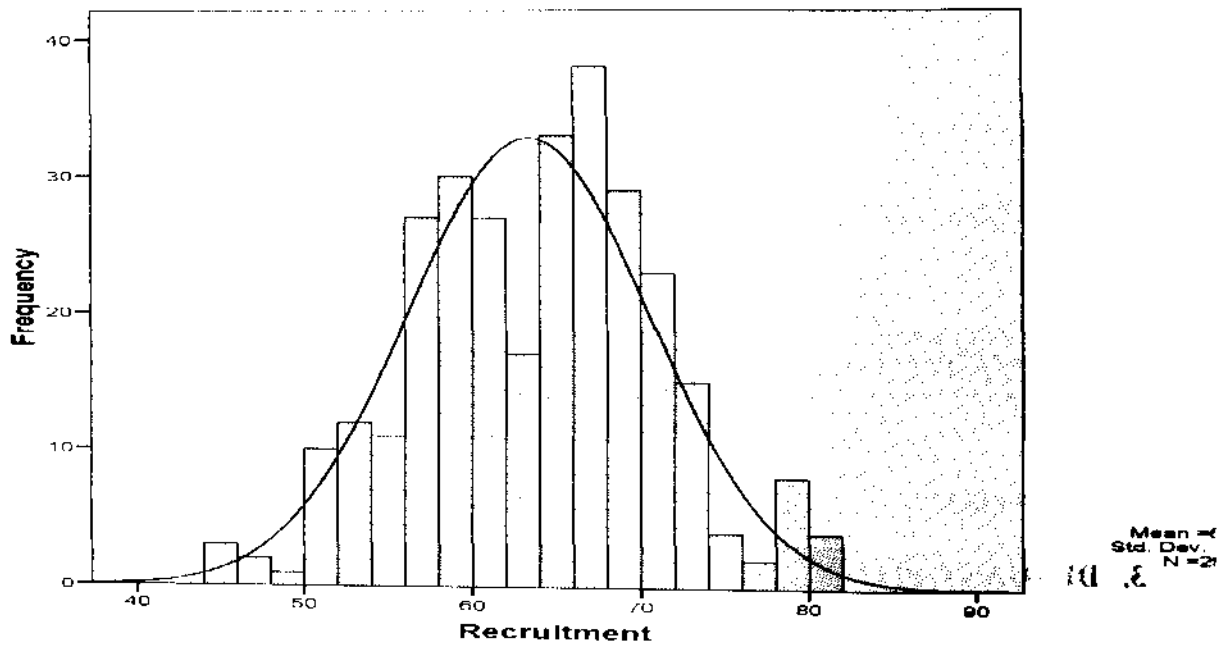
1. UJI NORMALITAS DENGAN NILAI SKEWNESS

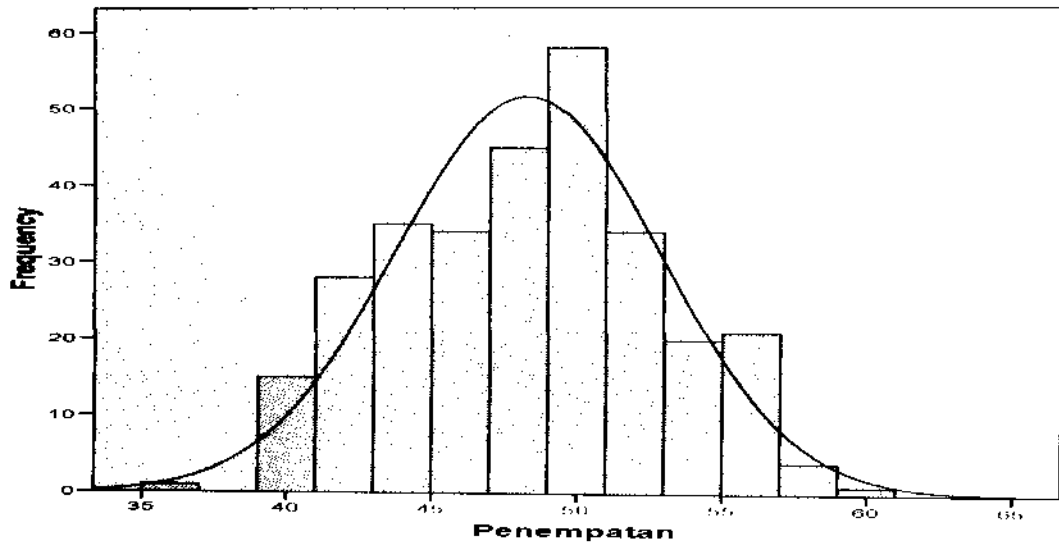
Descriptive Statistics

	N	Skewness		Kurtosis	
	Statistic	Statistic	Std. Error	Statistic	Std. Error
Recruitment	296	-.006	.142	-.196	.282
Pelatihan	296	.762	.142	-.488	.282
Penempatan	296	.008	.142	-.601	.282
Produktivitas	296	.041	.142	-.228	.282
Valid N (listwise)	296				

2. UJI NORMALITAS DENGAN HISTOGRAM DISPLAY







Mojo =
319.000
N = 296

3= nsef 0
veC 1997
IS= 1

3. DENGAN P-PLOT

Case Processing Summary

		Produktivitas	Recruitment	Pelatihan	Penempatan
Series or Sequence Length		296	296	296	296
Number of Missing Values in the Plot	User-Missing	0	0	0	0
	System-Missing	0	0	0	0

The cases are unweighted.

Estimated Distribution Parameters

	Produktivitas	Recruitment	Pelatihan	Penempatan
Normal Distribution Location	57.94	63.35	9.43	48.28
Scale	5.222	7.198	3.956	4.573

The cases are unweighted.

70001

LAMPIRAN UJI KORELASI DIMENSI ANTARA VARIABEL

1. UJI KORELASI VARIABEL DIMENSI REKRUITMEN DAN DIMENSI PRODUKTIVITAS

Correlations

		DREC_1	DREC_2	DREC_3	DPROD_1	DPROD_2	DPROD_3
DREC_1	Pearson Correlation	1	.645 **	.451 **	.481 **	.718 **	.715 **
	Sig. (2-tailed)		.000	.000	.000	.000	.000
	N	296	296	296	296	296	296
DREC_2	Pearson Correlation	.645 **	1	.345 **	.637 **	.584 **	.583 **
	Sig. (2-tailed)	.000		.000	.000	.000	.000
	N	296	296	296	296	296	296
DREC_3	Pearson Correlation	.451 **	.345 **	1	.073	.702 **	.611 **
	Sig. (2-tailed)	.000	.000		.211	.000	.000
	N	296	296	296	296	296	296
DPROD_1	Pearson Correlation	.481 **	.637 **	.073	1	.308 **	.681 **
	Sig. (2-tailed)	.000	.000	.211		.000	.000
	N	296	296	296	296	296	296
DPROD_2	Pearson Correlation	.718 **	.584 **	.702 **	.308 **	1	.551 **
	Sig. (2-tailed)	.000	.000	.000	.000		.000
	N	296	296	296	296	296	296
DPROD_3	Pearson Correlation	.715 **	.583 **	.611 **	.681 **	.551 **	1
	Sig. (2-tailed)	.000	.000	.000	.000	.000	
	N	296	296	296	296	296	296

** . Correlation is significant at the 0.01 level (2-tailed).

Uji Korelasi	Dimensi Rekrutmen	Dimensi Produktivitas		
		Knowledge	Skills	Attitude
Pearson Correlation	<i>Brand Corporate</i>	0.481**	0.718**	0.715**
Sig. (2-tailed)		0.000	0.000	0.000
Pearson Correlation	<i>Office Location</i>	0.637**	0.548**	0.583**
Sig. (2-tailed)		0.000	0.000	0.000
Pearson Correlation	<i>Interview Procces</i>	0.073	0.702**	0.611**
Sig. (2-tailed)		0.211	0.000	0.000

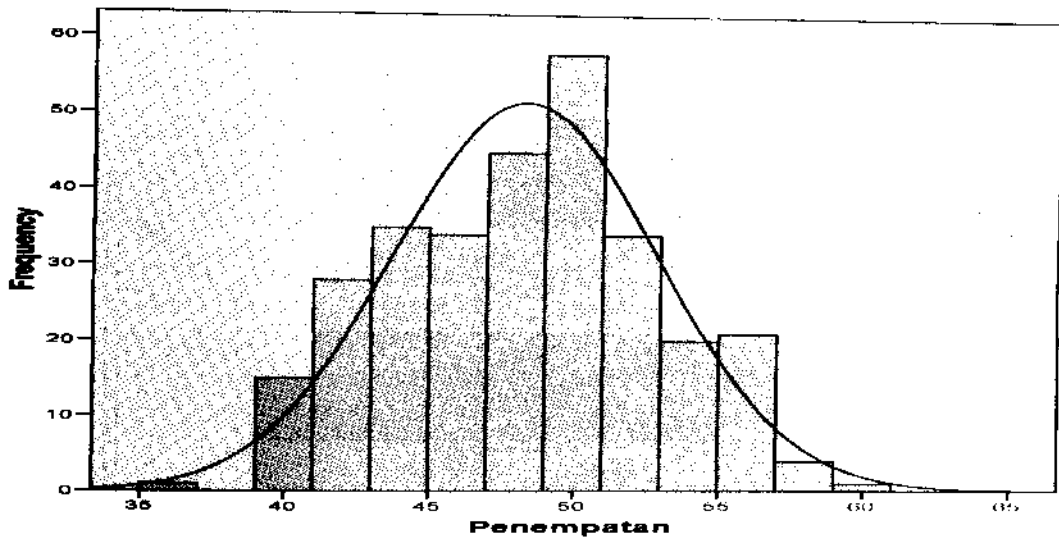
2. UJI KORELASI VARIABEL DIMENSI PENEMPATAN DAN DIMENSI PRODUKTIVITAS

Correlations

		DPNP_1	DPNP_2	DPNP_3	DPROD_1	DPROD_2	DPROD_3
DPNP_1	Pearson Correlation	1	.494**	.634**	.290**	.449**	.189**
	Sig. (2-tailed)		.000	.000	.000	.000	.001
	N	296	296	296	296	296	296
DPNP_2	Pearson Correlation	.494**	1	.309**	.679**	.327**	.418**
	Sig. (2-tailed)	.000		.000	.000	.000	.000
	N	296	296	296	296	296	296
DPNP_3	Pearson Correlation	.634**	.309**	1	.110	.287**	.328**
	Sig. (2-tailed)	.000	.000		.058	.000	.000
	N	296	296	296	296	296	296
DPROD_1	Pearson Correlation	.290**	.679**	.110	1	.308**	.681**
	Sig. (2-tailed)	.000	.000	.058		.000	.000
	N	296	296	296	296	296	296
DPROD_2	Pearson Correlation	.449**	.327**	.287**	.308**	1	.551**
	Sig. (2-tailed)	.000	.000	.000	.000		.000
	N	296	296	296	296	296	296
DPROD_3	Pearson Correlation	.189**	.418**	.328**	.681**	.551**	1
	Sig. (2-tailed)	.001	.000	.000	.000	.000	
	N	296	296	296	296	296	296

** Correlation is significant at the 0.01 level (2-tailed).

Uji Korelasi	Dimensi Pelatihan	Dimensi Produktivitas		
		Knowledge	Skills	Attitude
Pearson Correlation	<i>Job Analysis</i>	0.290**	0.449**	0.189**
Sig. (2-tailed)		0.000	0.000	0.001
Pearson Correlation	<i>Career Development</i>	0.679**	0.327**	0.418**
Sig. (2-tailed)		0.000	0.000	0.000
Pearson Correlation	<i>Organization Development</i>	0.110	0.287**	0.328**
Sig. (2-tailed)		0.058	0.000	0.000



SPSS
STATISTICS
Version 20.0

3. DENGAN P-PLOT

Case Processing Summary

		Produktivitas	Recruitment	Pelatihan	Penempatan
Series or Sequence Length		296	296	296	296
Number of Missing Values in the Plot	User-Missing	0	0	0	0
	System-Missing	0	0	0	0

The cases are unweighted.

Estimated Distribution Parameters

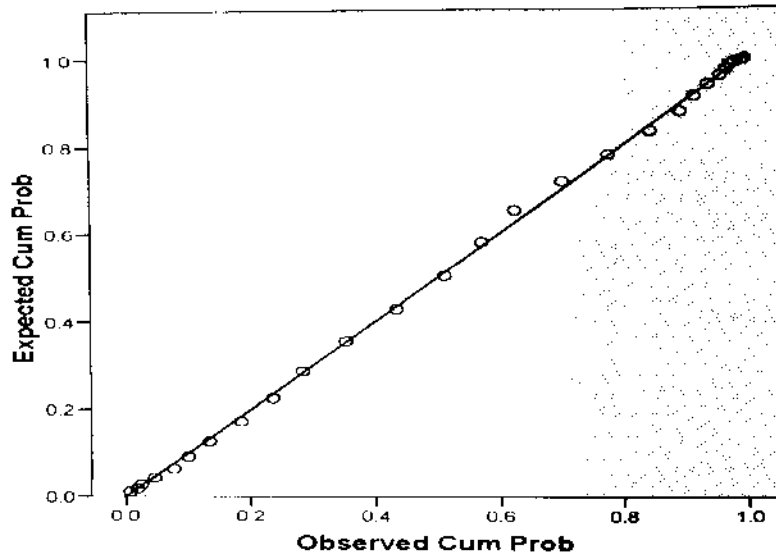
		Produktivitas	Recruitment	Pelatihan	Penempatan
Normal Distribution	Location	57.94	63.35	9.43	48.28
	Scale	5.222	7.198	3.956	4.573

The cases are unweighted.

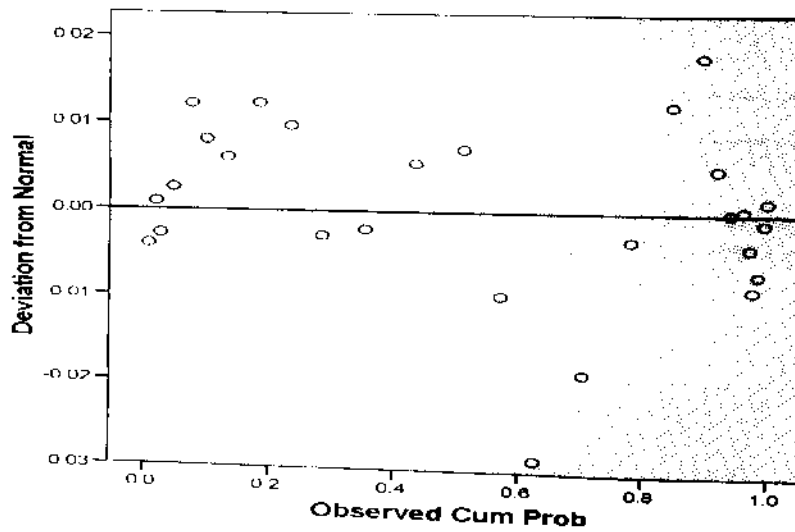
SPSS
STATISTICS
Version 20.0

Produktivitas

Normal P-P Plot of Produktivitas

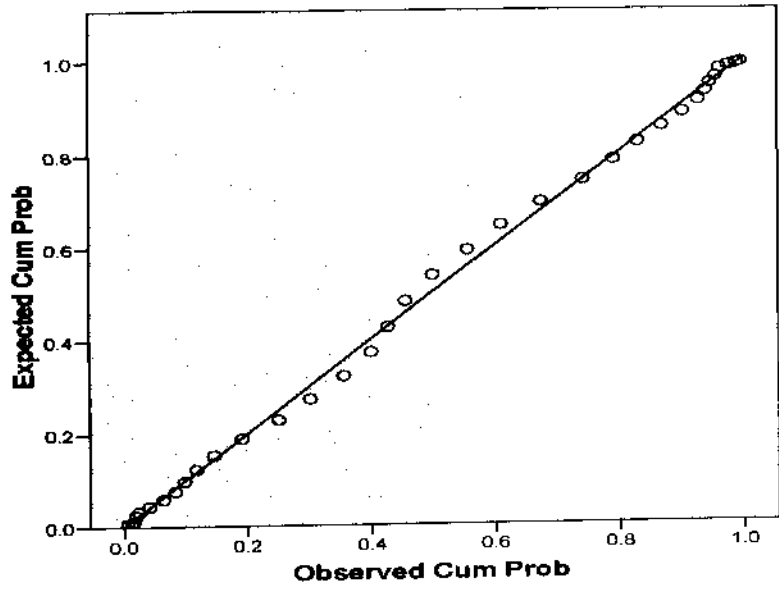


Detrended Normal P-P Plot of Produktivitas

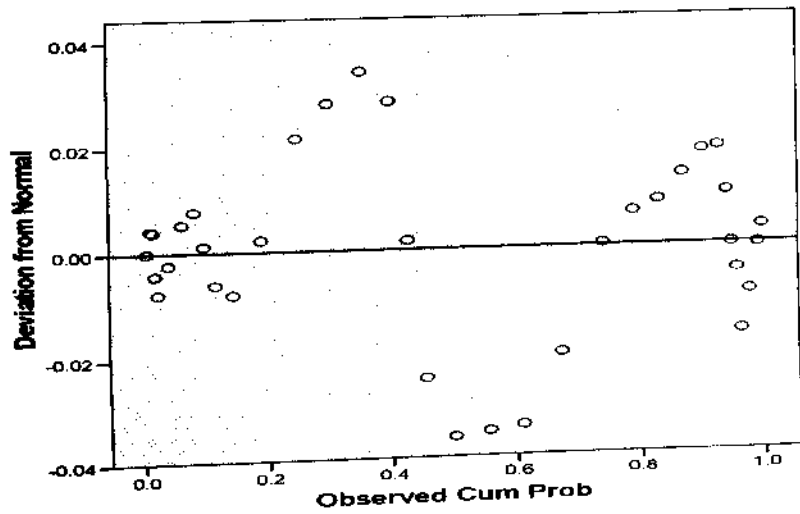


Recruitment

Normal P-P Plot of Recruitment

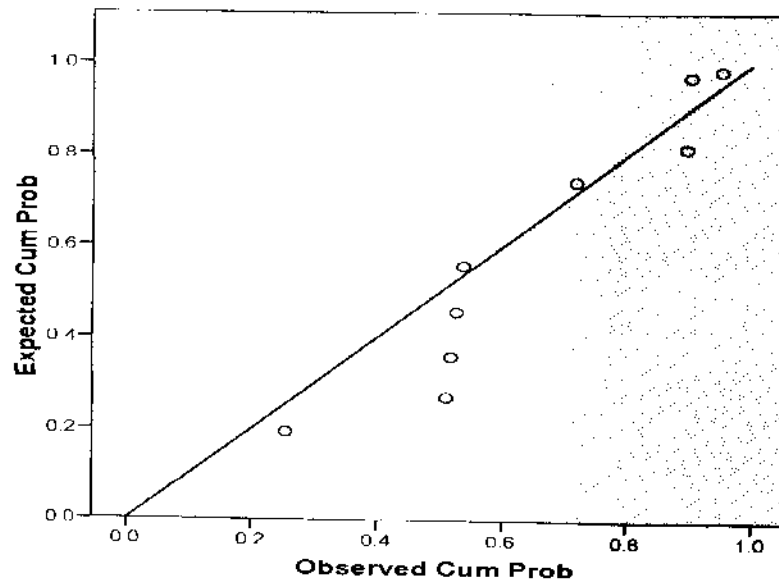


Detrended Normal P-P Plot of Recruitment

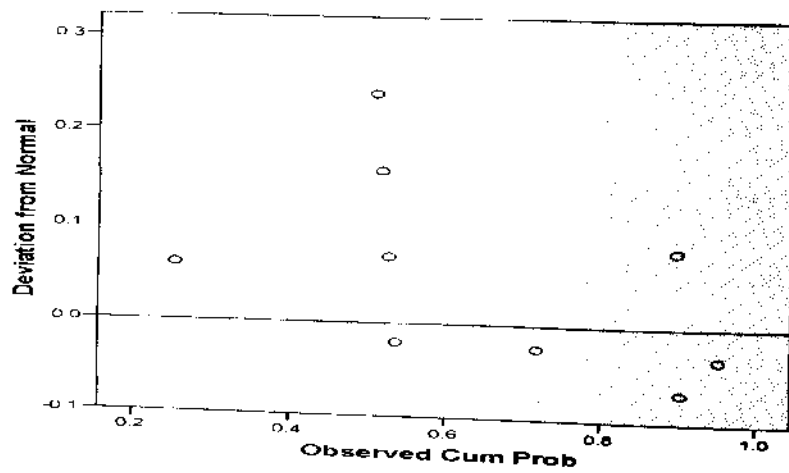


Pelatihan

Normal P-P Plot of Pelatihan

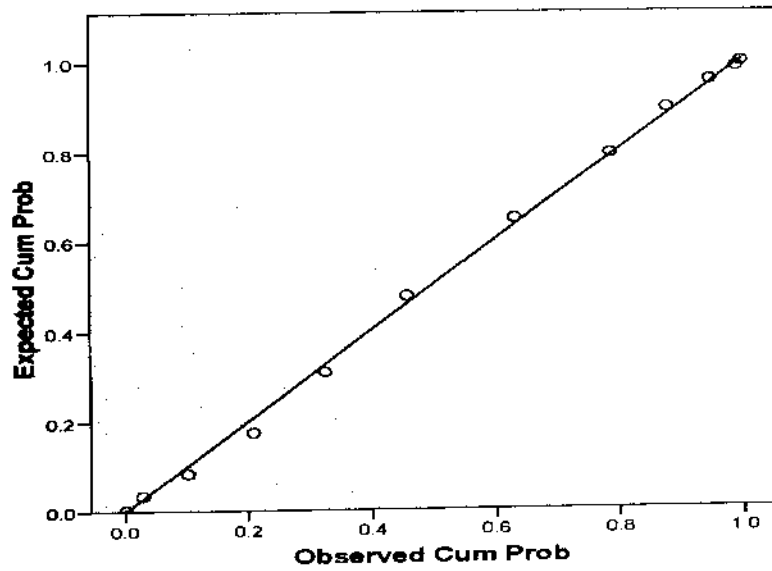


Detrended Normal P-P Plot of Pelatihan

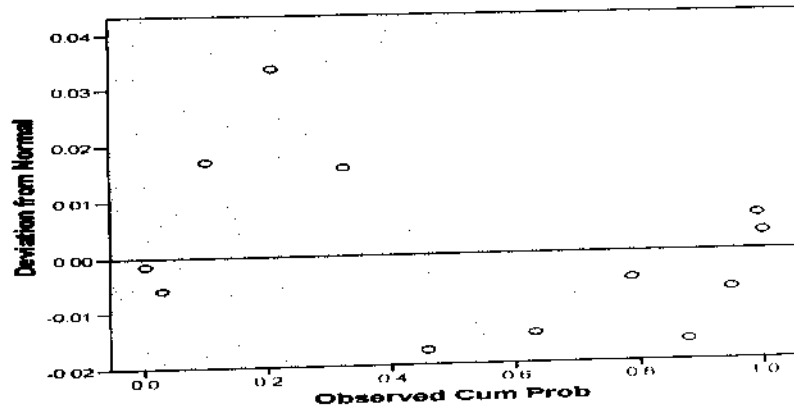


Penempatan

Normal P-P Plot of Penempatan



Detrended Normal P-P Plot of Penempatan



VI. LAMPIRAN UJI ANALISIS REGRESI

1950
1951
1952
1953
1954
1955
1956
1957
1958
1959
1960

1961
1962
1963
1964
1965
1966
1967
1968
1969
1970

1971
1972
1973
1974
1975
1976
1977
1978
1979
1980

LAMPIRAN ANALISIS REGRESI

1. ANALISIS REGRESI LINEAR BERGANDA : PENGARUH REKRUITMEN (X1), PELATIHAN (X2), PENEMPATAN (X3) TERHADAP PRODUKTIVITAS (Y)

Model Summary^b

Model	R	R Square	Adjusted R Square	Std. Error of the Estimate	Durbin-Watson
1	.862 ^a	.743	.741	2.659	1.563

a. Predictors: (Constant), Penempatan, Pelatihan, Recruitment

b. Dependent Variable: Produktivitas

ANOVA^b

Model		Sum of Squares	df	Mean Square	F	Sig.
1	Regression	5978.932	3	1992.977	281.956	.000 ^a
	Residual	2063.974	292	7.068		
	Total	8042.905	295			

a. Predictors: (Constant), Penempatan, Pelatihan, Recruitment

b. Dependent Variable: Produktivitas

Coefficients^a

Model		Unstandardized Coefficients		Standardized Coefficients	t	Sig.	Collinearity Statistics	
		B	Std. Error	Beta			Tolerance	VIF
1	(Constant)	15.818	1.796		8.808	.000		
	Recruitment	.596	.026	.821	23.346	.000	.710	1.408
	Pelatihan	.032	.039	.024	.823	.411	.997	1.003
	Penempatan	.084	.040	.074	2.105	.036	.712	1.405

a. Dependent Variable: Produktivitas

Collinearity Diagnostics^a

Model	Dimension	Eigenvalue	Condition Index	Variance Proportions			
				(Constant)	Recruitment	Pelatihan	Penempatan
1	1	3.870	1.000	.00	.00	.01	.00
	2	.120	5.690	.00	.01	.95	.00
	3	.006	24.908	.45	.84	.03	.03
	4	.004	30.620	.54	.15	.01	.96

a. Dependent Variable: Produktivitas

PROD

PROD

PROD

PROD

PROD

PROD

PROD

PROD

PROD

PROD

PROD

PROD

PROD

PROD

PROD

LAMPIRAN Uji KORELASI DIMENSI ANTARA VARIABEL

1. Uji KORELASI VARIABEL DIMENSI REKRUITMEN DAN DIMENSI PRODUKTIVITAS

Correlations

		DREC_1	DREC_2	DREC_3	DPROD_1	DPROD_2	DPROD_3
DREC_1	Pearson Correlation	1	.645 **	.451 **	.481 **	.718 **	.715 **
	Sig. (2-tailed)		.000	.000	.000	.000	.000
	N	296	296	296	296	296	296
DREC_2	Pearson Correlation	.645 **	1	.345 **	.637 **	.584 **	.583 **
	Sig. (2-tailed)	.000		.000	.000	.000	.000
	N	296	296	296	296	296	296
DREC_3	Pearson Correlation	.451 **	.345 **	1	.073	.702 **	.611 **
	Sig. (2-tailed)	.000	.000		.211	.000	.000
	N	296	296	296	296	296	296
DPROD_1	Pearson Correlation	.481 **	.637 **	.073	1	.308 **	.681 **
	Sig. (2-tailed)	.000	.000	.211		.000	.000
	N	296	296	296	296	296	296
DPROD_2	Pearson Correlation	.718 **	.584 **	.702 **	.308 **	1	.551 **
	Sig. (2-tailed)	.000	.000	.000	.000		.000
	N	296	296	296	296	296	296
DPROD_3	Pearson Correlation	.715 **	.583 **	.611 **	.681 **	.551 **	1
	Sig. (2-tailed)	.000	.000	.000	.000	.000	
	N	296	296	296	296	296	296

** . Correlation is significant at the 0.01 level (2-tailed).

Uji Korelasi	Dimensi Rekrutmen	Dimensi Produktivitas		
		Knowledge	Skills	Attitude
Pearson Correlation	<i>Brand Corporate</i>	0.481**	0.718**	0.715**
Sig. (2-tailed)		0.000	0.000	0.000
Pearson Correlation	<i>Office Location</i>	0.637**	0.548**	0.583**
Sig. (2-tailed)		0.000	0.000	0.000
Pearson Correlation	<i>Interview Proses</i>	0.073	0.702**	0.611**
Sig. (2-tailed)		0.211	0.000	0.000

2. UJI KORELASI VARIABEL DIMENSI PENEMPATAN DAN DIMENSI PRODUKTIVITAS

Correlations

		DPNP_1	DPNP_2	DPNP_3	DPROD_1	DPROD_2	DPROD_3
DPNP_1	Pearson Correlation	1	.494**	.634**	.290**	.449**	.189**
	Sig. (2-tailed)		.000	.000	.000	.000	.001
	N	296	296	296	296	296	296
DPNP_2	Pearson Correlation	.494**	1	.309**	.679**	.327**	.418**
	Sig. (2-tailed)	.000		.000	.000	.000	.000
	N	296	296	296	296	296	296
DPNP_3	Pearson Correlation	.634**	.309**	1	.110	.287**	.328**
	Sig. (2-tailed)	.000	.000		.058	.000	.000
	N	296	296	296	296	296	296
DPROD_1	Pearson Correlation	.290**	.679**	.110	1	.308**	.681**
	Sig. (2-tailed)	.000	.000	.058		.000	.000
	N	296	296	296	296	296	296
DPROD_2	Pearson Correlation	.449**	.327**	.287**	.308**	1	.551**
	Sig. (2-tailed)	.000	.000	.000	.000		.000
	N	296	296	296	296	296	296
DPROD_3	Pearson Correlation	.189**	.418**	.328**	.681**	.551**	1
	Sig. (2-tailed)	.001	.000	.000	.000	.000	
	N	296	296	296	296	296	296

** Correlation is significant at the 0.01 level (2-tailed).

Uji Korelasi	Dimensi Pelatihan	Dimensi Produktivitas		
		Knowledge	Skills	Attitude
Pearson Correlation	<i>Job Analysis</i>	0.290**	0.449**	0.189**
Sig. (2-tailed)		0.000	0.000	0.001
Pearson Correlation	<i>Career Development</i>	0.679**	0.327**	0.418**
Sig. (2-tailed)		0.000	0.000	0.000
Pearson Correlation	<i>Organization Development</i>	0.110	0.287**	0.328**
Sig. (2-tailed)		0.058	0.000	0.000